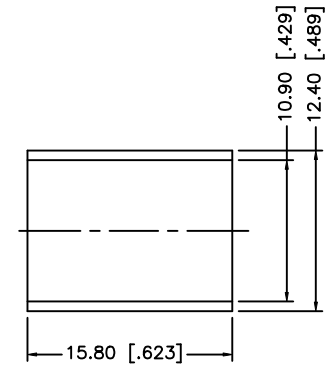
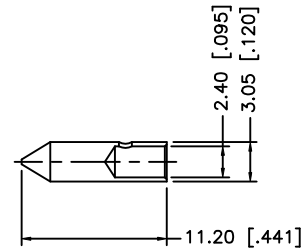
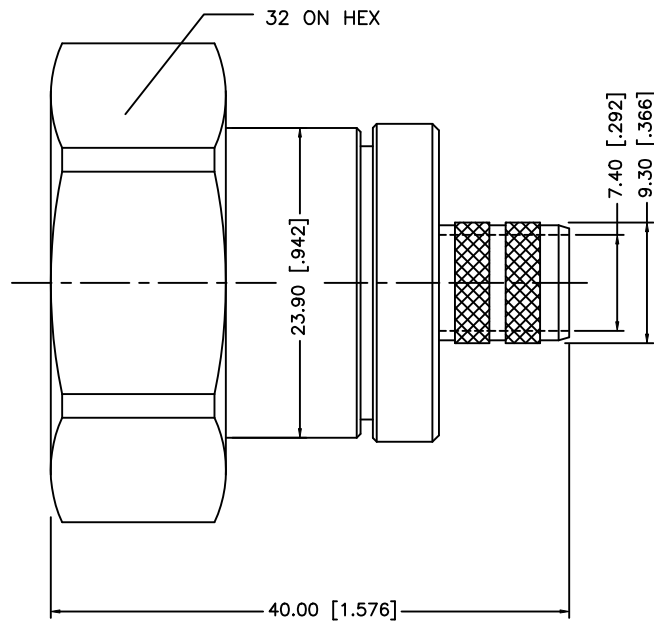
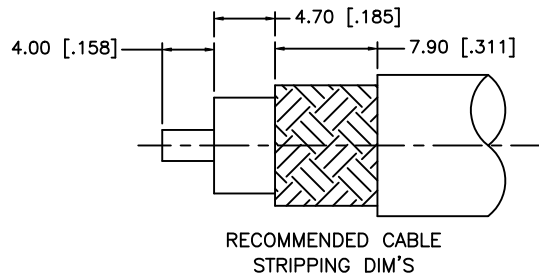


| REV. | DATE     | ECR NO. | DESCRIPTION                                      |
|------|----------|---------|--|
| A    | 12/29/00 | -       | MODIFY PLATING TO SILVER                         |
| B    | 12/27/05 | -       | MODIFY PLATING TO NEXCOTE, UPDATE DRAWING FORMAT |
| C    | 07/27/08 | -       | REVISE MATING FACE TO 32 HEX NUT                 |



NOTES:

1. CRIMPED FERRULE HEX CRIMP SIZE .429" [10.9]
2. CRIMPED CONTACT PIN HEX CRIMP SIZE .100" [2.54]

| REV.  | DATE        | ECR NO.           | DESCRIPTION     |
|---|-------------|-------------------|-----------------|
| 8   |             |                   |                 |
| 7   |             |                   |                 |
| 6   |             |                   |                 |
| 5   | FERRULE     | COPPER            | NEXCOTE 1       |
| 4   | CONTACT PIN | BRASS             | GOLD 1          |
| 3   | INSULATOR   | PTFE              | NATURAL 1       |
| 2   | HOUSING     | BRASS             | NEXCOTE 1       |
| 1   | BODY        | BRASS             | NEXCOTE 1       |
| <p>UNLESS OTHERWISE SPECIFIED DIMENSIONS ARE IN MILLIMETERS. DIMENSIONS IN [ ] ARE IN INCHES AND FOR CUSTOMER REFERENCE ONLY.</p> <p>UNLESS OTHERWISE SPECIFIED TOLERANCES FOR MILLIMETERS ARE:<br/> 0.5 - 8mm ± 0.20mm<br/> 8 - 30mm ± 0.40mm<br/> 30 - 120mm ± 0.50mm</p> <p>UNLESS OTHERWISE SPECIFIED TOLERANCES FOR INCHES ARE:<br/> .020 - .315 = ± 0.007"<br/> .315 - 1.180 = ± 0.015"<br/> 1.180 - 4.724 = ± 0.020"</p> <p>DO NOT SCALE DRAWING</p> |             |                   |                 |
| APPROVALS   |             | DATE              |                 |
| DRAWN GRS   |             | 07/27/08          |                 |
| CHECKED   |             |                   |                 |
| ISSUED  |             |                   |                 |
| SHEET 1 OF 1  |             |                   |                 |
| CAD FILE  |             | C:/272/272105.DWG |                 |
| <h1>Amphenol Connex</h1>  |             |                   |                 |
| <b>7/16 CRIMP PLUG<br/>(FOR RG-8/U, 213/U, 393/U CABLE)</b>   |             |                   |                 |
| PART NO.  |             | 272105            |                 |
| DWG. NO.  | 272105.DWG  | REV. C            | SIZE A SCALE NA |