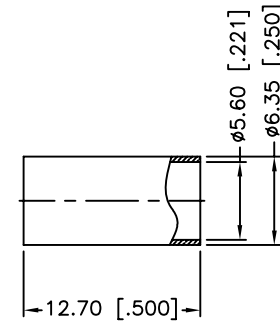
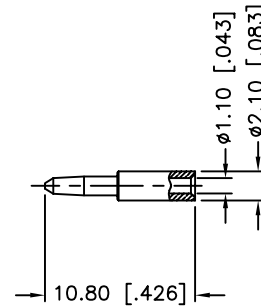
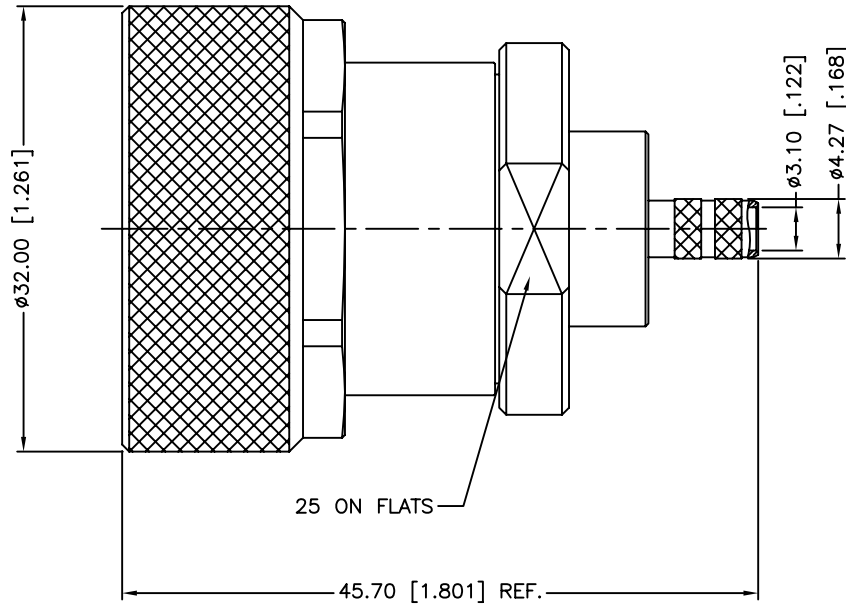


RECOMMENDED
CABLE STRIPPING DIM'S

REV.	DATE	ECR NO.	DESCRIPTION
A	12/29/00	XXXXXX	MODIFY PLATING TO SILVER
B	12/27/05	XXXXXX	MODIFY PLATING TO NEXCOTE, UPDATE DRAWING FORMAT
C	07/27/08	XXXXXX	REVISE MATING FACE TO 32 HEX NUT
D	06/24/09	XXXXXX	PLATINGS WERE CHANGED



1. CRIMPED FERRULE
HEX CRIMP SIZE .213"
2. CRIMPED CONTACT PIN
HEX CRIMP SIZE .068"
OR CONTACT PIN TO SOLDER

9	FERRULE	BRASS	NEXCOTE	1
8	CONTACT PIN	BRASS	SILVER	1
7	SHEEL	BRASS	NEXCOTE	1
6	GASKET	SILICONE	RED	1
5	CONTACT BODY	BRASS	NEXCOTE	1
4	GASKET	SILICONE	RED	1
3	CONTACT PIN	BER. COPPER	SILVER	1
2	INSULATOR	PTFE	NATURAL	1
1	BARREL	BRASS	NEXCOTE	1
	DESCRIPTION	MATERIAL	FINISH	QTY

UNLESS OTHERWISE SPECIFIED DIMENSIONS ARE IN MILLIMETERS. DIMENSIONS IN [] ARE IN INCHES AND FOR CUSTOMER REFERENCE ONLY.

UNLESS OTHERWISE SPECIFIED TOLERANCES FOR MILLIMETERS ARE:
0.5 - 8mm ± 0.20mm
8 - 30mm ± 0.40mm
30 - 120mm ± 0.50mm

UNLESS OTHERWISE SPECIFIED TOLERANCES FOR INCHES ARE:
.020 - .315 = ± 0.007"
.315 - 1.180 = ± 0.015"
1.180 - 4.724 = ± 0.020"

DO NOT SCALE DRAWING

APPROVALS	DATE
DRAWN M.ZHANG	06/24/09
CHECKED	
ISSUED	
SHEET 1 OF 1	
CAD FILE C:/CONNEX/272104.DWG	

Amphenol Connex			
PART DESCRIPTION 7/16 CRIMP PLUG (FOR RG-55/U,142A/U,223/U,400/U)			
PART NO. 272104			
DWG. NO.	272104.DWG	REV.	D
SIZE	A	SCALE	NA