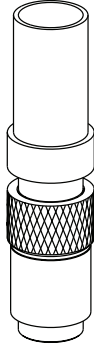


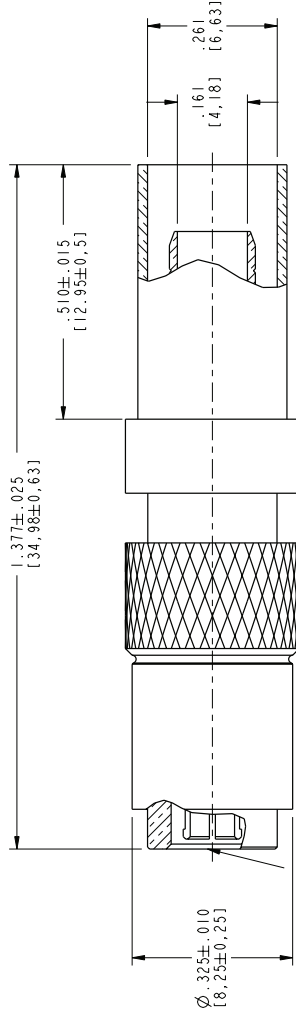
102-799-48		REV I S I O N S	
DRAWING NO.	DESCRIPTION	DATE	ECO APPR
THIRD ANGLE PROJ.	RELEASE TO MFG.	6/10/99	43024 CPM
	∅ .059 [1,5] WAS ∅ .039 [1,00]	2/21/02	43681 CPM
	ADDED: DISC, NOTES 2 & 3	4/16/02	44022 KJC

- NOTES:
- MATERIALS AND FINISHES:
 - BRASS, NICKEL PLATED
 - INNER CONTACT = BRASS, GOLD PLATED
 - OUTER CONTACT = BeCu, GOLD PLATED
 - SPRING = STAINLESS STEEL
 - FERRULE = COPPER ALLOY, NICKEL PLATED
 - BALL = STAINLESS STEEL
 - INSULATORS = PTFE

- ELECTRICAL:
 - FREQUENCY RANGE = DC - 2.5 GHz
 - RETURN LOSS = 30 dB MIN.
- PHYSICAL:
 - TEMPERATURE RANGE = -40°C TO +155°C
 - INTERFACE = PER CECC 22230
- CRIMPING TOOL P/N: .255 HEX X .300 LONG

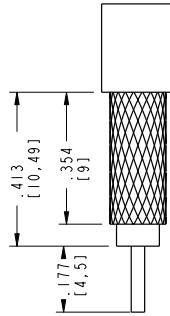


SCALE 2.000



∅ .059 [1,5]

INTERFACE PER NOTE 3B



RECOMMENDED CABLE STRIPPING DIMENSIONS
SCALE 3.000

CUSTOMER OUTLINE DRAWING

ALL OTHER SHEETS ARE FOR INTERNAL USE ONLY

DRAWN C. McGRATH	DATE 07-Feb-01	TITLE 1.0 / 2.3 PUSH PULL PLUG FOR LMR240 CABLE	Amphenol Amphenol Corporation Communication and Network Products Division Danbury, CT U.S.A. 06810
ENGINEER O. BARTHELMES	DATE 07-Feb-01		
APPROVED B. GLEISSNER	DATE 07-Feb-01		
CAD FILE I:\1023\102-799-48	CODE ID 74868	DWG SIZE B	DRAWING NO. 102-799-48
MATERIAL 30 - 120mm ± 0,6mm		UNLESS OTHERWISE SPECIFIED, DIMENSIONS ARE IN INCHES AND TOLERANCES ARE: 0,5 - 6mm ± 0,2mm	
<p>NOTICE - These drawings, specifications, or other data (1) are, and remain the property of Amphenol Corp. (2) must be returned upon request; and (3) are confidential and not to be disclosed to any person other than those to whom they are given by Amphenol Corp. The furnishing of these drawings, specifications, or other data by Amphenol Corp., or to any other person in any manner, for any purpose is not to be regarded by implication or otherwise in any manner licensing, granting rights, or permitting such holder to make any use of, or sell any product, or to disclose such information, or to use or disclose such information in any way related to or disclosed by, said drawings, specifications, or other data.</p>			
REFERENCE GEN# 102-799-48_ASSY			
SCALE 4.0:1		SHEET 2 OF 2	REV D