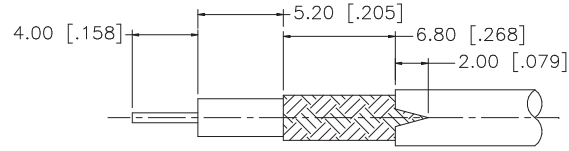
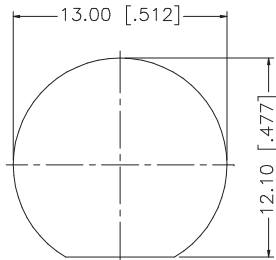
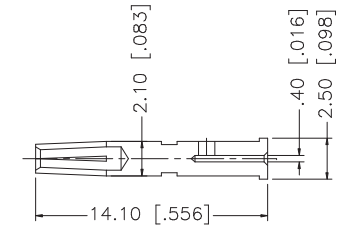
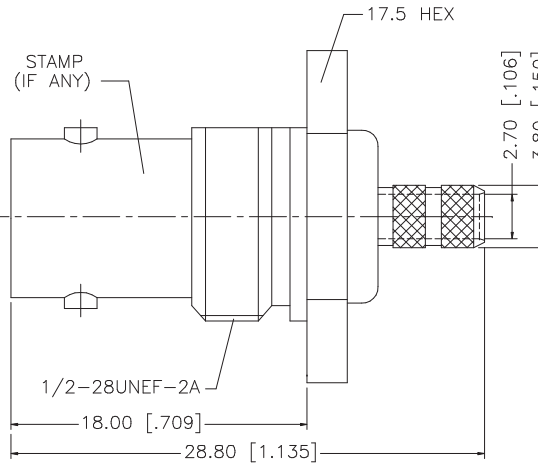
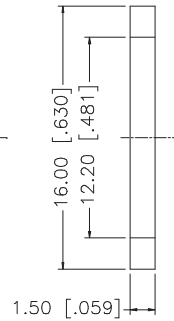
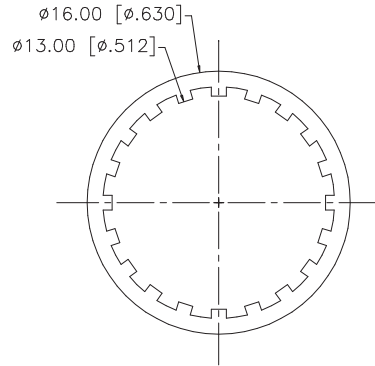
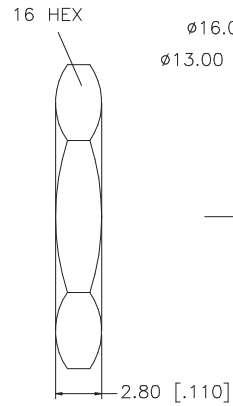


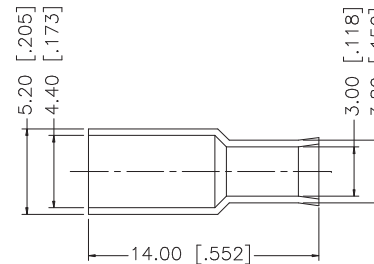
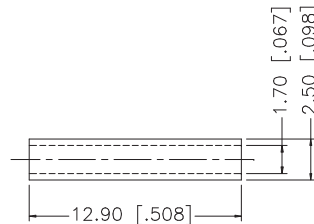
REV.	DATE	DESCRIPTION
A	10/12/03	MODIFY DRAWING FORMAT



RECOMMENDED CABLE STRIPPING DIMENSIONS



RECOMMENDED MOUNTING HOLE



NOTE:

1. CRIMPED FERRULE
HEX CRIMP SIZE .178"
2. CRIMPED CONTACT PIN
HEX CRIMP SIZE .068"

DESCRIPTION	MATERIAL	FINISH	QTY	DO NOT SCALE DRAWING	APPROVALS	DATE	PART DESCRIPTION				
8	FERRULE	COPPER	NICKEL	1	<small>UNLESS OTHERWISE SPECIFIED DIMENSIONS ARE IN MILLIMETERS. DIMENSIONS IN [] ARE IN INCHES AND FOR CUSTOMER REFERENCE ONLY.</small> <small>UNLESS OTHERWISE SPECIFIED TOLERANCES FOR MILLIMETERS ARE: 0.5 - 8mm ± 0.20mm 8 - 30mm ± 0.40mm 30 - 120mm ± 0.50mm</small> <small>UNLESS OTHERWISE SPECIFIED TOLERANCES FOR INCHES ARE: .020 - .315 = ± 0.007" .315 - 1.180 = ± 0.015" 1.180 - 4.724 = ± 0.020"</small>	10/12/03	<h1 style="text-align: center;">Amphenol Connex</h1>				
7	SLEEVE	DELTRIN	NATURAL	1		DRAWN					G.R.S.
6	HEX NUT	BRASS	NICKEL	1		CHECKED		PART NO. 112235			
5	LOCK WASHER	BRASS	NICKEL	1		ISSUED					
4	GASKET	RUBBER	RED	1		SHEET	1 OF 1	REV. A SIZE A SCALE NA			
3	CONTACT PIN	PHOS. BRONZE	GOLD	1		CAD FILE	C:/112/112235.DWG				
2	INSULATOR	DELTRIN	NATURAL	1							
1	BODY	BRASS	NICKEL	1							