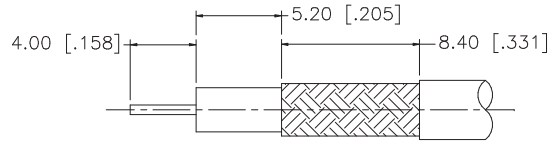
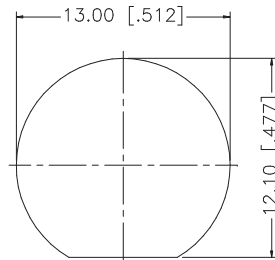
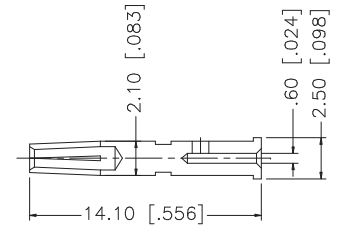
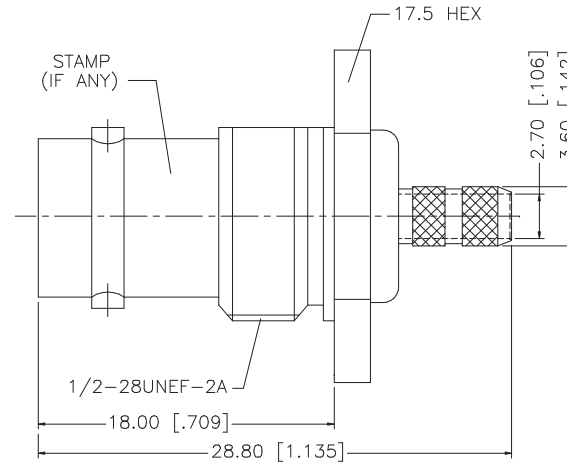
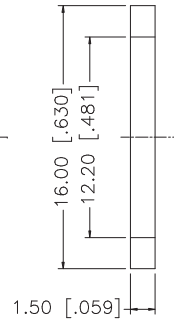
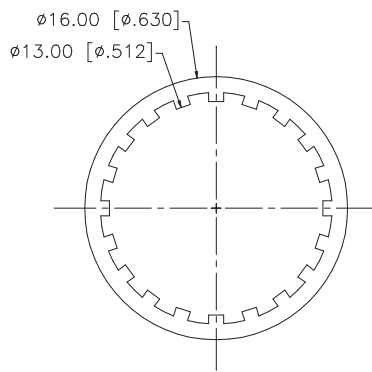
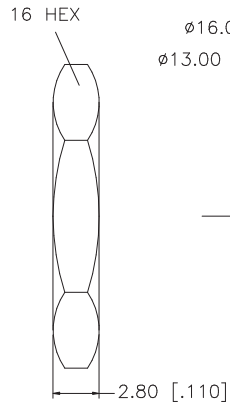


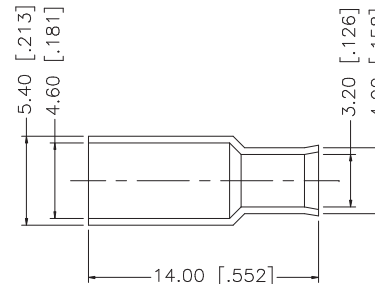
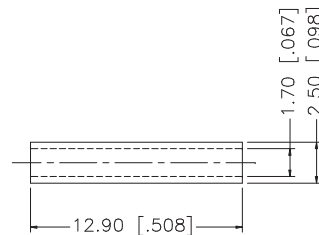
REV.	DATE	DESCRIPTION
A	01/10/04	UPDATE DRAWING FORMAT



RECOMMENDED CABLE STRIPPING DIMENSIONS



RECOMMENDED MOUNTING HOLE



NOTE:

1. CRIMPED FERRULE
HEX CRIMP SIZE .187"
2. CRIMPED CONTACT PIN
HEX CRIMP SIZE .068"
3. MAX. PANEL THICKNESS = 3.5mm

QTY	DESCRIPTION	MATERIAL	FINISH	QTY	DO NOT SCALE DRAWING	APPROVALS	DATE	Amphenol Connex					
8	FERRULE	BRASS	NICKEL	1	<small>UNLESS OTHERWISE SPECIFIED DIMENSIONS ARE IN MILLIMETERS. DIMENSIONS IN [] ARE IN INCHES AND FOR CUSTOMER REFERENCE ONLY.</small> <small>UNLESS OTHERWISE SPECIFIED TOLERANCES FOR MILLIMETERS ARE: 0.5 - 8mm ± 0.20mm 8 - 30mm ± 0.40mm 30 - 120mm ± 0.50mm</small> <small>UNLESS OTHERWISE SPECIFIED TOLERANCES FOR INCHES ARE: .020 - .315 = ± 0.007" .315 - 1.180 = ± 0.015" 1.180 - 4.724 = ± 0.020"</small>	DRAWN	G.R.S.	01/10/04	BNC BULKHEAD CRIMP JACK FOR 316 DOUBLE BRAID				
7	SLEEVE	DELTRIN	NATURAL	1		CHECKED							PART DESCRIPTION
6	HEX NUT	BRASS	NICKEL	1		ISSUED							PART NO.
5	LOCK WASHER	BRASS	NICKEL	1		SHEET	1 OF 1		112517				
4	GASKET	RUBBER	RED	1		CAD FILE	C:/112/112517.DWG	DWG. NO.	112517.DWG	REV. NC	SIZE A	SCALE NA	
3	CONTACT PIN	PHOS. BRONZE	GOLD	1									
2	INSULATOR	DELTRIN	NATURAL	1									
1	BODY	BRASS	NICKEL	1									