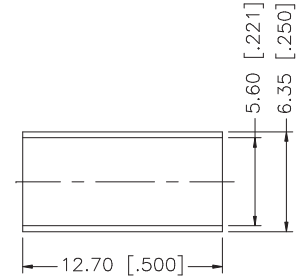
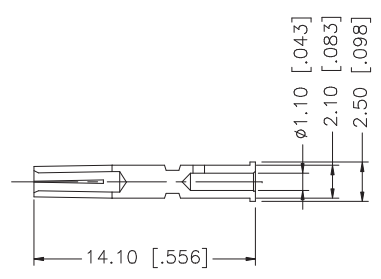
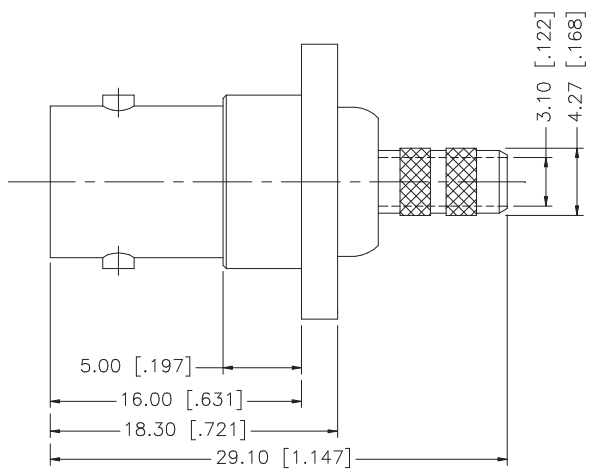
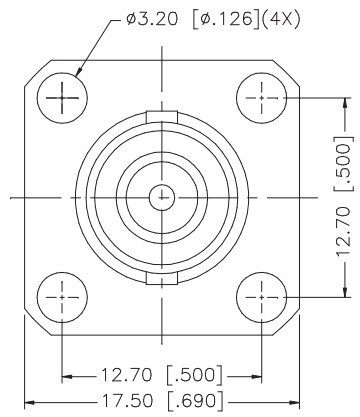
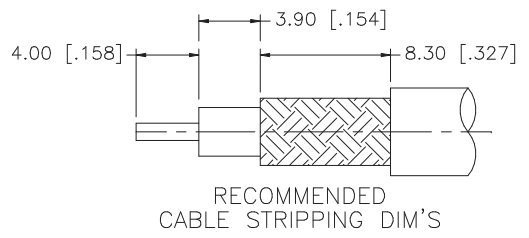


REV.	DATE	DESCRIPTION
A	07/13/05	UPDATE DRAWING FORMAT



- NOTE:
1. CRIMPED FERRULE HEX
CRIMP SIZE .213"
 2. CRIMPED CONTACT PIN
HEX CRIMP SIZE .068"

8					<p>UNLESS OTHERWISE SPECIFIED DIMENSIONS ARE IN MILLIMETERS. DIMENSIONS IN [] ARE IN INCHES AND FOR CUSTOMER REFERENCE ONLY.</p> <p>UNLESS OTHERWISE SPECIFIED TOLERANCES FOR MILLIMETERS ARE: 0.5 - 8mm ± 0.20mm 8 - 30mm ± 0.40mm 30 - 120mm ± 0.50mm</p> <p>UNLESS OTHERWISE SPECIFIED TOLERANCES FOR INCHES ARE: .020 - .315 = ± 0.007" .315 - 1.180 = ± 0.015" 1.180 - 4.724 = ± 0.020"</p> <p>DO NOT SCALE DRAWING</p>	APPROVALS	DATE	<h1 style="text-align: center;">Amphenol Connex</h1>				
7						DRAWN	G.R.S.					07/13/05
6						CHECKED			PART DESCRIPTION			
5						ISSUED			BNC PANEL CRIMP JACK (FOR RG-55/U, 142A/U, 223/U, 400/U)			
4	FERRULE	COPPER	NICKEL	1		SHEET	1 OF 1		PART NO.			
3	CONTACT PIN	PHOS. BRONZE	GOLD	1					112527			
2	INSULATOR	DELRIN	NATURAL	1					DWG. NO. 112527.DWG			
1	BODY	BRASS	NICKEL	1		CAD FILE	C:/112/112572.DWG		REV. A	SIZE A	SCALE NA	