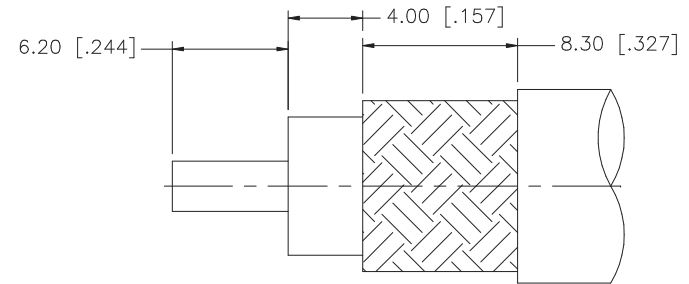
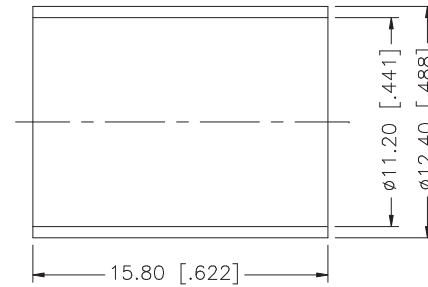
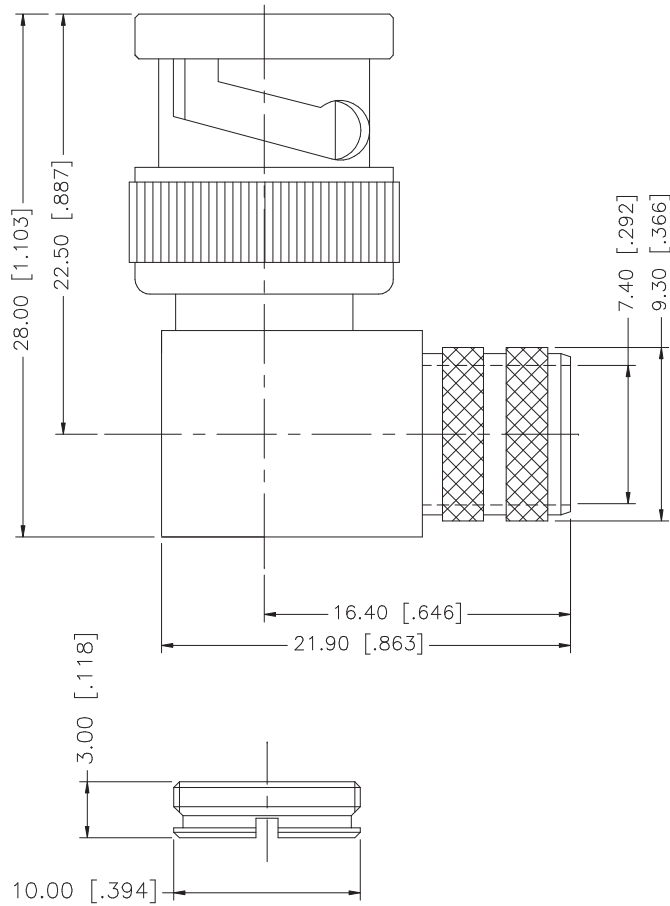


REV.	DATE	DESCRIPTION
A	06/23/98	MODIFY INTERNAL FERRULE DIMENSION
B	09/06/06	UPDATE DRAWING FORMAT



RECOMMENDED
CABLE STRIPPING DIM'S

8				
7				
6				
5	COVER	BRASS	NICKEL	1
4	FERRULE	BRASS	NICKEL	1
3	CONTACT PIN	BRASS	GOLD	1
2	INSULATOR	TEFLON	NATURAL	1
1	BODY	BRASS	NICKEL	1
	DESCRIPTION	MATERIAL	FINISH	QTY

UNLESS OTHERWISE SPECIFIED DIMENSIONS ARE IN MILLIMETERS. DIMENSIONS IN [] ARE IN INCHES AND FOR CUSTOMER REFERENCE ONLY.

UNLESS OTHERWISE SPECIFIED TOLERANCES FOR MILLIMETERS ARE:
 0.5 - 8mm ± 0.20 mm
 8 - 30mm ± 0.40 mm
 30 - 120mm ± 0.50 mm

UNLESS OTHERWISE SPECIFIED TOLERANCES FOR INCHES ARE:
 .020 - .315 = ± 0.007 "
 .315 - 1.180 = ± 0.015 "
 1.180 - 4.724 = ± 0.020 "

DO NOT SCALE DRAWING

APPROVALS	DATE
DRAWN G.R.S.	09/06/06
CHECKED	
ISSUED	
SHEET 1 OF 1	
CAD FILE	C:/112/112595.DWG

Amphenol Connex

PART DESCRIPTION

BNC R/A CRIMP PLUG
(FOR RG 214/U CABLE)

PART NO.

112595

DWG. NO.

112595.DWG

REV. B

SIZE A

SCALE NA