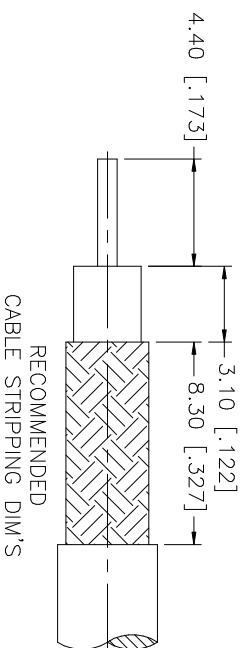
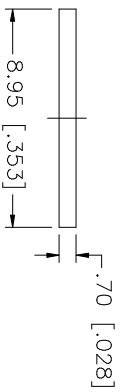
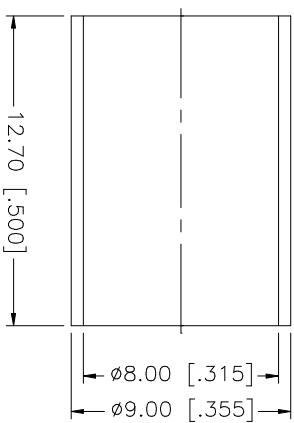
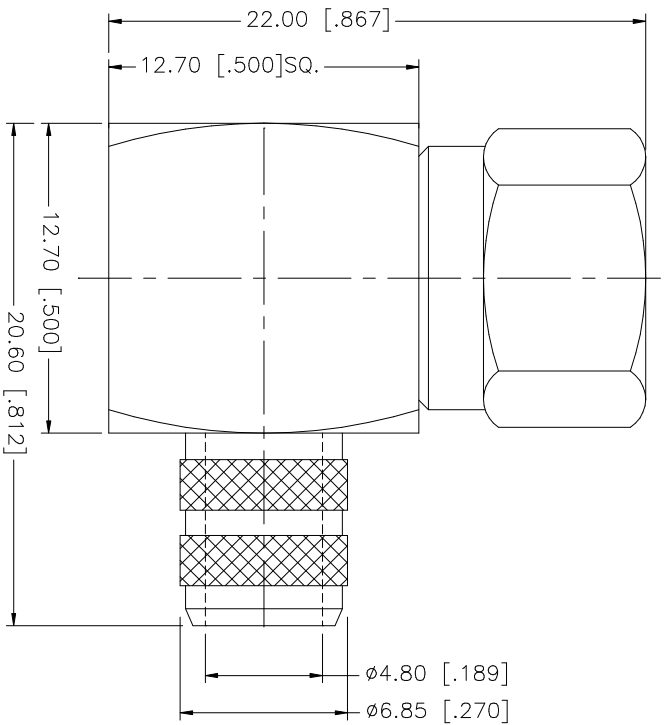


REV.	DATE	DESCRIPTION
NC	12/06/99	INITIAL RELEASE
A	01/13/00	ADD CABLE SIZE TO DESCRIPTION
B	09/26/05	UPDATE DRAWING FORMAT



NO.	DESCRIPTION	MATERIAL	FINISH	QTY	UNLESS OTHERWISE SPECIFIED DIMENSIONS ARE IN INCHES AND FOR CUSTOMER REFERENCE ONLY. UNLESS OTHERWISE SPECIFIED TOLERANCES FOR MILLIMETERS ARE: 0.5 - 8mm ± 0.20mm 8 - 30mm ± 0.40mm 30 - 120mm ± 0.50mm UNLESS OTHERWISE SPECIFIED TOLERANCES FOR INCHES ARE: .020 - .315 = ± 0.007" .315 - 1.180 = ± 0.015" 1.180 - 4.724 = ± 0.020"	APPROVALS	DATE	PART DESCRIPTION		
8								<h1 style="text-align: center;">Amphenol Connex</h1> <p style="text-align: center;">F R/A CRIMP PLUG (FOR RG-6/U CABLE)</p> <p style="text-align: center;">222164</p>		
7										
6										
5										
4	FERRULE	COPPER	NICKEL	1						
3	CONTACT PIN	BRASS	GOLD	1						
2	INSULATOR	TEFLON	NATURAL	1						
1	BODY	BRASS	NICKEL	1						
	DESCRIPTION	MATERIAL	FINISH	QTY	DO NOT SCALE DRAWING	CAD FILE C:/222/222164.DWG	DWG. NO. 222164.DWG	REV. B	SIZE A	SCALE NA