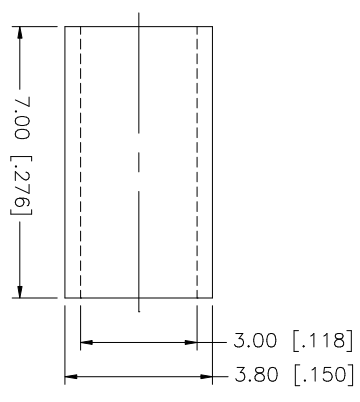
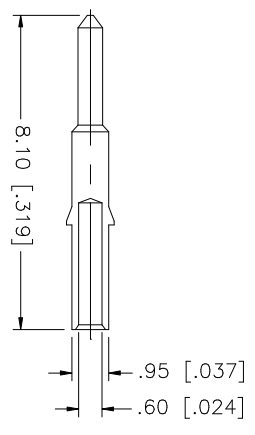
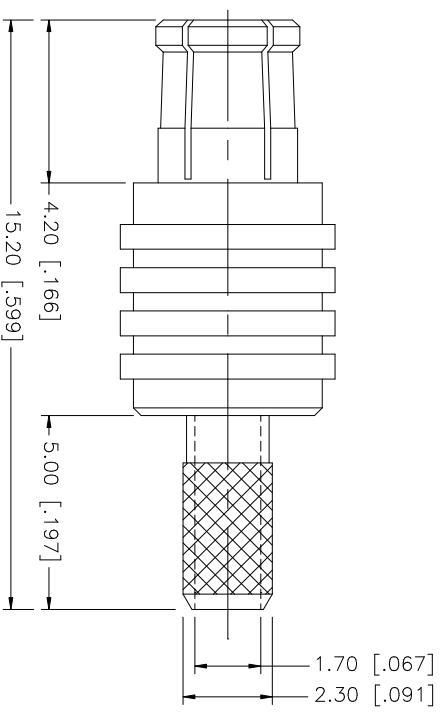
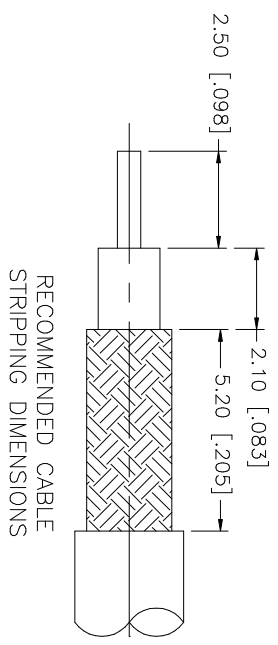


REV.	DATE	DESCRIPTION
A	02/24/04	UPDATE DRAWING FORMAT



8																				
7																				
6																				
5																				
4	FERRULE	COPPER	NICKEL	1																
3	CONTACT PIN	BRASS	GOLD	1																
2	INSULATOR	TEFLON	NATURAL	1																
1	BODY	BER. COPPER	NICKEL	1																
	DESCRIPTION	MATERIAL	FINISH	QTY																
					UNLESS OTHERWISE SPECIFIED, DIMENSIONS ARE IN MILLIMETERS. DIMENSIONS IN [ ] ARE IN INCHES AND FOR CUSTOMER REFERENCE ONLY.															
					UNLESS OTHERWISE SPECIFIED, DIMENSIONS FOR MILLIMETERS ARE:															
					0.5 - 8mm ± 0.20mm															
					8 - 30mm ± 0.40mm															
					30 - 120mm ± 0.50mm															
					UNLESS OTHERWISE SPECIFIED, DIMENSIONS FOR INCHES ARE:															
					.020 - .315 = ± 0.007"															
					.315 - 1.180 = ± 0.015"															
					1.180 - 4.724 = ± 0.020"															
					DO NOT SCALE DRAWING															
					APPROVALS		DATE													
					DRAWN G.R.S.		02/24/04													
					CHECKED															
					ISSUED															
					SHEET		1 OF 1													
					CAD FILE		C:/252/252101.DWG													
					DWG. NO.		252101.DWG		REV.		A		SIZE		A		SCALE		NA	
					<b>MCX CRIMP PLUG</b> (FOR RG-174/U, 188A/U, 316/U)															
					PART NO. 252101															