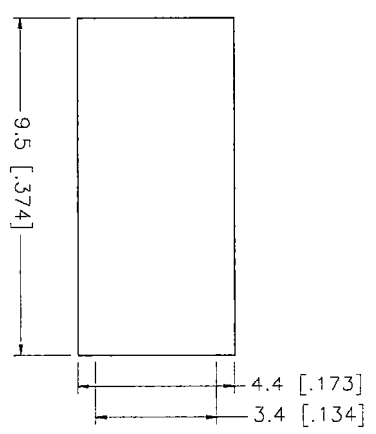
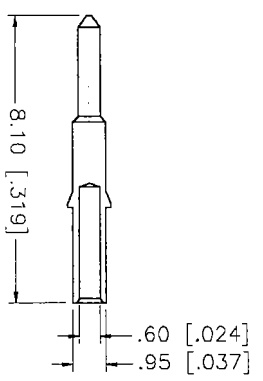
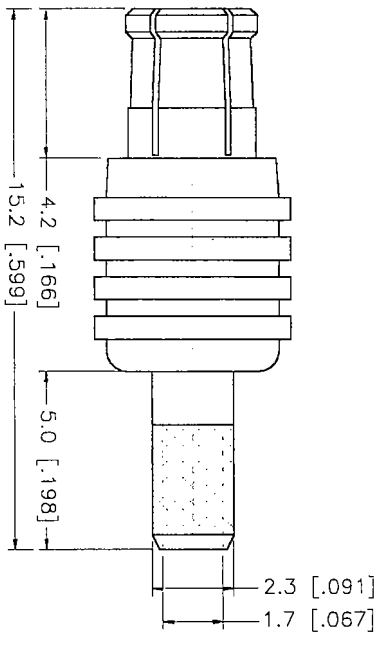
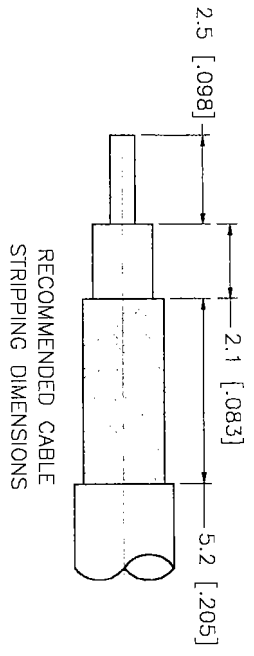


REV.	DATE	DESCRIPTION
A	01/13/99	ADD CRIMP NOTES / CHANGE FERRULE DIMS.



NOTE:
 USE .151 HEX CRIMP DIE TO
 TERMINATE FERRULE TO CABLE.
 - CONNEX TOOL 47-10160
 - IDEAL TOOL 36-489

DESCRIPTION	MATERIAL	FINISH	UNLESS OTHERWISE SPECIFIED DIMENSIONS ARE IN MILLIMETERS FOR CUSTOMER REFERENCE ONLY	APPROVALS	DATE	TITLE	SCALE	PART NO.	SHEET	OF	REV.
1 HOUSING	BRASS	NICKEL	UNLESS OTHERWISE SPECIFIED DIMENSIONS ARE IN MILLIMETERS FOR CUSTOMER REFERENCE ONLY UNLESS OTHERWISE SPECIFIED TOLERANCES FOR MILLIMETERS ARE: 0.5-6 = ± 0.2 6-30 = ± 0.4 30-120 = ± 0.6 120-315 = ± 1 315-1000 = ± 1.6 1000-2000 = ± 2.4	DRAWN	01/13/99	Connex Connector Corporation MCX STRAIGHT CRIMP PLUG (FOR RG 316 DOUBLE BRAID)	A	99001	252120	1	A
2 BODY	BER. COPPER	NICKEL		CHECKED	G.R.S.						
3 INSULATOR	TEFLON	NATURAL		ISSUED							
4 INSULATOR	TEFLON	NATURAL									
5 CONTACT PIN	BRASS	GOLD 30 MIN									
6 CONTACT PIN	BRASS	GOLD 30 MIN									
7 FERRULE	COPPER	NICKEL									
8				DO NOT SCALE DRAWING					NA	252120	1