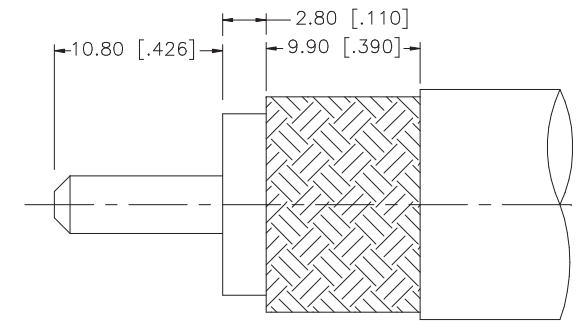
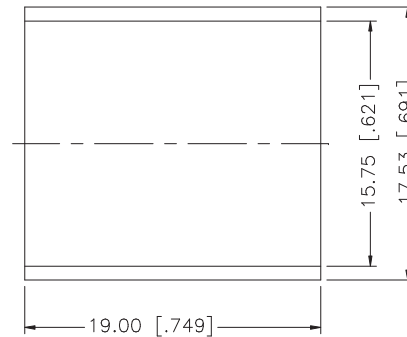
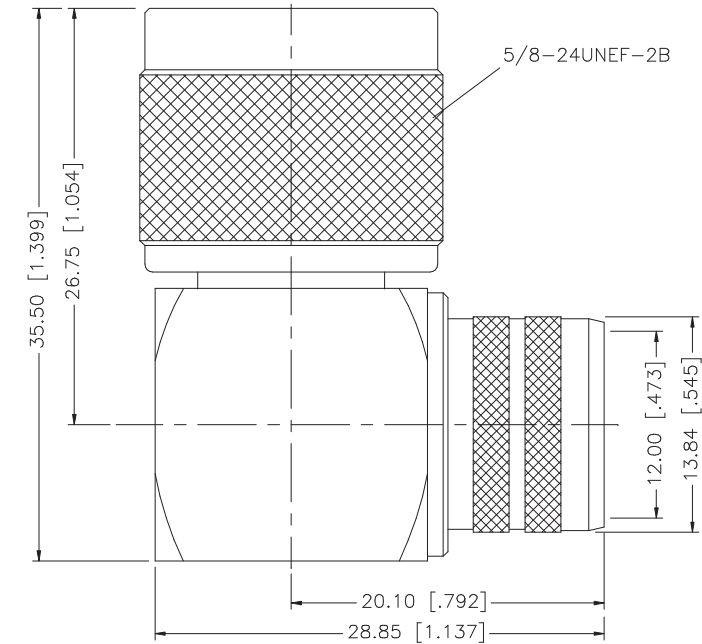
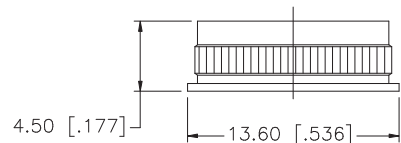


REV.	DATE	DESCRIPTION
NC	05/04/00	INITIAL RELEASE
A	02/11/06	UPDATE DRAWING FORMAT



RECOMMENDED
CABLE STRIPPING DIM'S



NOTE:

1. CRIMPED FERRULE
HEX. CRIMP SIZE .600"
2. CONTACT PIN TO SOLDER.

				UNLESS OTHERWISE SPECIFIED DIMENSIONS ARE IN MILLIMETERS. DIMENSIONS IN [] ARE IN INCHES AND FOR CUSTOMER REFERENCE ONLY.	APPROVALS	DATE	Amphenol Connex						
8				UNLESS OTHERWISE SPECIFIED TOLERANCES FOR MILLIMETERS ARE: 0.5 - 8mm ± 0.20mm 8 - 30mm ± 0.40mm 30 - 120mm ± 0.50mm UNLESS OTHERWISE SPECIFIED TOLERANCES FOR INCHES ARE: .020 - .315 = ± 0.007" .315 - 1.180 = ± 0.015" 1.180 - 4.724 = ± 0.020"	DRAWN	G.R.S.				02/11/06	N R/A DIRECT CRIMP PLUG (FOR LMR-600 CABLE)		
7					CHECKED			PART NO. 172263					
6					ISSUED								
5	FERRULE	COPPER	NEXCOTE		1	SHEET	1 OF 1	REV.	A	SIZE	A	SCALE	NA
4	COVER	BRASS	NEXCOTE		1	CAD FILE		C:/172/172263.DWG					
3	CONTACT PIN	BRASS	GOLD	1	DO NOT SCALE DRAWING								
2	INSULATOR	TEFLON	NATURAL	1									
1	BODY	BRASS	NEXCOTE	1									
DESCRIPTION				MATERIAL	FINISH	QTY							