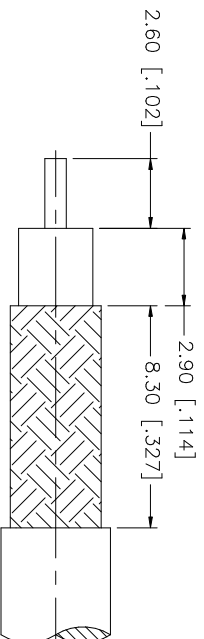
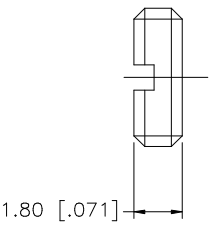
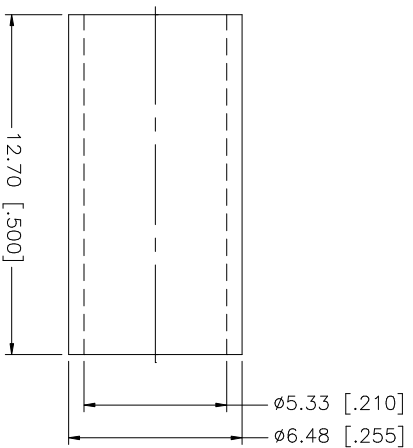
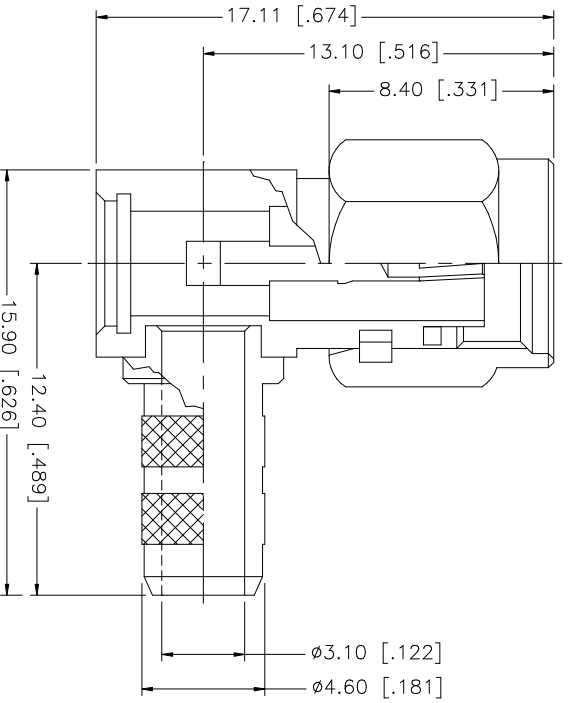


REV.	DATE	DESCRIPTION
NC	07/31/98	INITIAL RELEASE
A	05/01/04	UPDATE DRAWING FORMAT
B	07/21/05	MODIFY MAIN BODY DIMENSION TO 17.11



RECOMMENDED
CABLE STRIPPING DIM'S

8																			
7																			
6																			
5	FERRULE	COPPER	GOLD	1															
4	COVER	BRASS	GOLD	1															
3	CONTACT PIN	BER. COPPER	GOLD	1															
2	INSULATOR	TEFLON	NATURAL	1															
1	HOUSING/BARREL	BRASS	GOLD	1															
	DESCRIPTION	MATERIAL	FINISH	QTY															
					UNLESS OTHERWISE SPECIFIED DIMENSIONS ARE IN MILLIMETERS. DIMENSIONS IN [] ARE IN INCHES AND FOR CUSTOMER REFERENCE ONLY. TOLERANCES FOR MILLIMETERS ARE: 0.5 - 8mm ± 0.20mm 8 - 30mm ± 0.40mm 30 - 120mm ± 0.50mm UNLESS OTHERWISE SPECIFIED DIMENSIONS FOR INCHES ARE: .020 - .315 = ± 0.007" .315 - 1.180 = ± 0.015" 1.180 - 4.724 = ± 0.020"					APPROVALS DRAWN G.R.S. DATE 07/21/05 CHECKED ISSUED SHEET 1 OF 1					CAD FILE C:/132/132122RP.DWG DWG. NO. 132122RP.DWG REV. B SIZE A SCALE NA				
<p style="text-align: center;">Amphenol Connex</p> <p style="text-align: center;">PART DESCRIPTION SMA REVERSE POLARITY R/A CRIMP PLUG (FOR RG-58C/U, 58/U) PART NO. 132122RP</p>																			