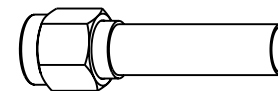


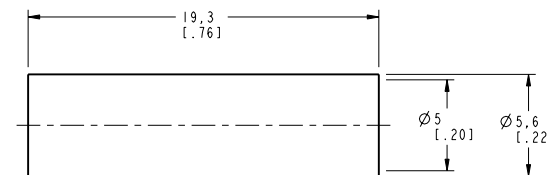
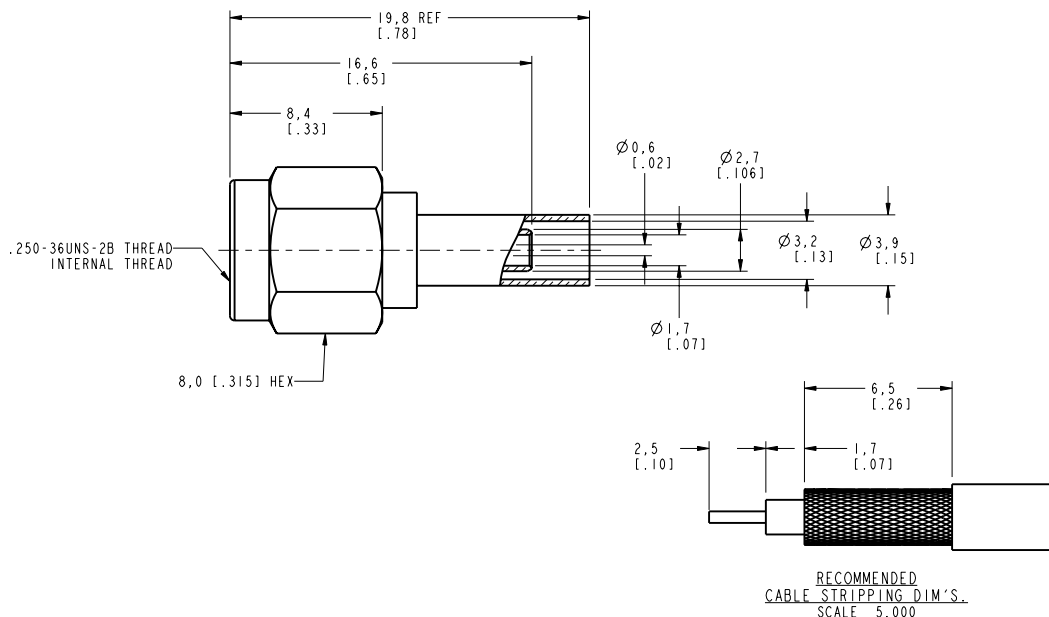
NOTES:

- I. MATERIALS OF CONSTRUCTION:
- BODY, FERRULE & SHELL = BRASS, NICKEL PLATED
- CONTACT PIN = BRASS, GOLD PLATED
- RETAINING RING = BeCu, NATURAL
- INSULATOR = TEFLON, PER MIL-P-19468
- GASKET = SILICONE RUBBER, COLOR RED
- HEAT SHRINK TUBING = COLOR BLACK

901-9877-RFX		REVISIONS			
DRAWING NO.	REV	DESCRIPTION	DATE	ECO	APPR
THIRD ANGLE PROJ.	A	RELEASE TO MFG.	1/25/01	43650	CPM



SCALE 2.000



CUSTOMER OUTLINE DRAWING  
ALL OTHER SHEETS ARE FOR INTERNAL USE ONLY

UNLESS OTHERWISE SPECIFIED, DIMENSIONS ARE IN INCHES AND TOLERANCES ARE:  
0.5 - 6mm ±0.2mm  
6 - 30mm ±0.4mm  
30 - 120mm ±0.6mm

NOTICE - These drawings, specifications, or other data (1) are, and remain the property of Amphenol Corp. (2) must be returned upon request; and (3) are confidential and not to be disclosed to any person other than those to whom they are given by Amphenol Corp. The furnishing of these drawings, specifications, or other data by Amphenol Corp., or to any other person to anyone for any purpose is not to be regarded by implication or otherwise in any manner licensing, granting rights or permitting such holder or any other person to manufacture, use or sell any product, process or design, patented or otherwise, that may in any way be related to or disclosed by said drawings, specifications, or other data.

MATERIAL

REFERENCE  
GEN# ASSYM15\_SMA  
EAR# 967698-0

DRAWN

C. McGRATH

ENGINEER

O. BARTHELMES

APPROVED

O. BARTHELMES

CAD FILE

1:\SMA\901-9877-RFX

DATE

1/10/01

DATE

1/10/01

DATE

1/25/01

TITLE

SMA CRIMP PLUG  
FOR RG-174/U, 188A/U  
316/U CABLES

Amphenol

Amphenol Corporation  
Communication and Network  
Products Division  
Danbury, CT U.S.A. 06810

SCALE: 4.0:1 SHEET 2 OF 2

CODE ID

74868

DWG SIZE

B

DRAWING NO.

901-9877-RFX

REV

A