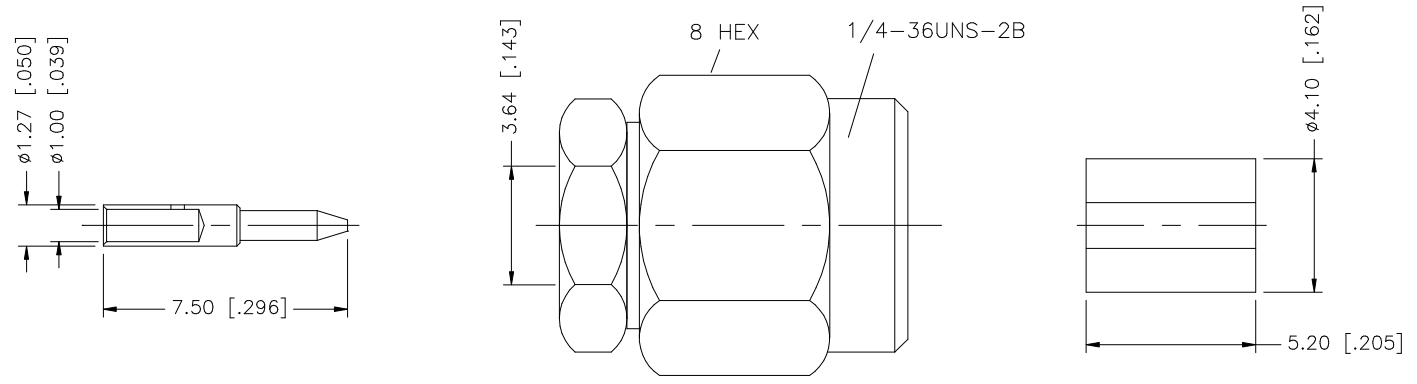
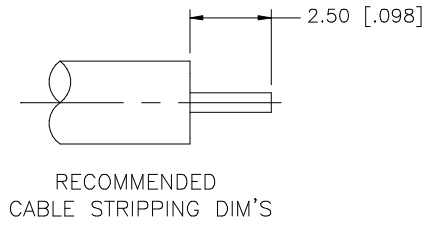


REV.	DATE	DESCRIPTION
NC	01/30/07	INITIAL RELEASE



NOTE:

1. NEXCOTE PLATING UNDER GOLD ON BODY AND CENTER CONTACT.  
NO NICKEL UNDER COATING.
2. CONTACT PIN TO SOLDER.

8					<small>UNLESS OTHERWISE SPECIFIED DIMENSIONS ARE IN MILLIMETERS. DIMENSIONS IN [ ] ARE IN INCHES AND FOR CUSTOMER REFERENCE ONLY.</small>  <small>UNLESS OTHERWISE SPECIFIED TOLERANCES FOR MILLIMETERS ARE:</small> 0.5 - 8mm ± 0.20mm 8 - 30mm ± 0.40mm 30 - 120mm ± 0.50mm  <small>UNLESS OTHERWISE SPECIFIED TOLERANCES FOR INCHES ARE:</small> .020 - .315 = ± 0.007" .315 - 1.180 = ± 0.015" 1.180 - 4.724 = ± 0.020"	APPROVALS	DATE	<h1 style="color: blue;">Amphenol Connex</h1>				
7				DRAWN		G.R.S.	01/30/07					
6				CHECKED				PART DESCRIPTION  <b>SMA SEMI-RIGID PLUG (FOR .141" CABLE) TORQUE NUT W/CABLE</b>				
5				ISSUED								
4	COUPLING NUT	STAINLESS STEEL	PASSIVATED S.S.	1		SHEET	1 OF 1	PART NO.  <b>132379</b>				
3	CONTACT PIN	BRASS	GOLD	1								
2	INSULATOR	TEFLON	NATURAL	1			DWG. NO. 132379.DWG					
1	BODY	BRASS	GOLD	1							REV. NC	
DESCRIPTION		MATERIAL	FINISH	QTY	DO NOT SCALE DRAWING		CAD FILE C:/132/132379.DWG					