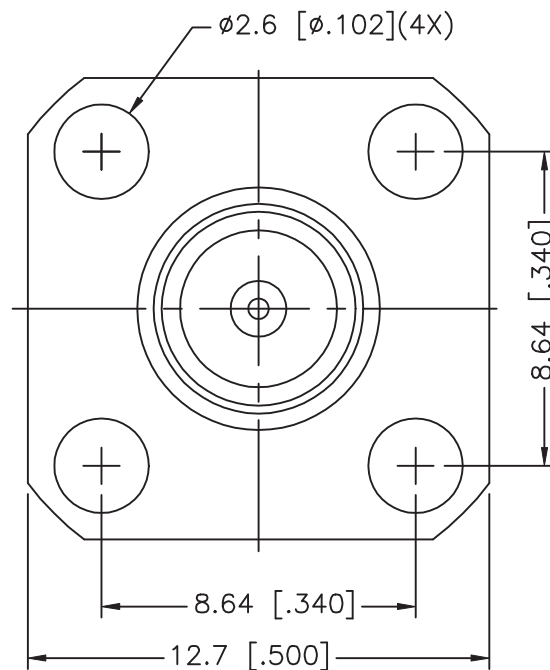
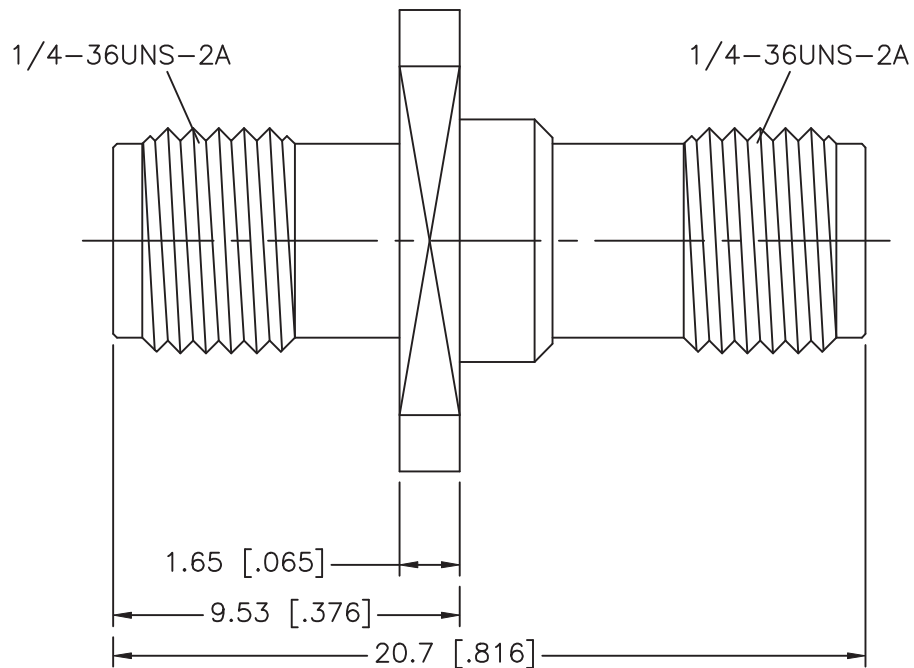


REV.	DATE	DESCRIPTION
NC	02/11/02	INITIAL RELEASE



NOTES:
 1. MAX. PANEL THICKNESS = 6.35mm [.250]

DESCRIPTION	MATERIAL	FINISH	UNLESS OTHERWISE SPECIFIED DIMENSIONS ARE IN MILLIMETERS	APPROVALS	DATE	<h1 style="text-align: center;">Amphenol - Connex</h1> <p style="text-align: center;">CONNECTOR CORPORATION</p>				
1 BODY	BRASS	NICKEL	DIMENSIONS IN [] ARE IN INCHES FOR CUSTOMER REFERENCE ONLY UNLESS OTHERWISE SPECIFIED TOLERANCES FOR MILLIMETERS ARE: 0.5-6 = ± 0.2 6-30 = ± 0.4 30-120 = ± 0.6 120-315 = ± 1 315-1000 = ± 1.6 1000-2000 = ± 2.4	DRAWN	G.R.S.					02/11/02
2 INSULATOR	TEFLON	NATURAL		CHECKED			SIZE	FSCM NO.	DWG. NO.	REV.
3 CONTACT PIN	BER. COPPER	GOLD		ISSUED			A	99001	132340.DWG	NC
4						SCALE	PART NO.	SHEET		
5						NA	132340	1 OF 1		
6										
7										
8			DO NOT SCALE DRAWING							