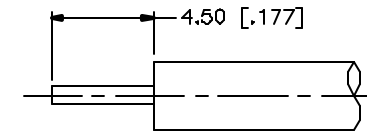
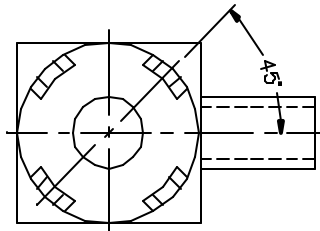
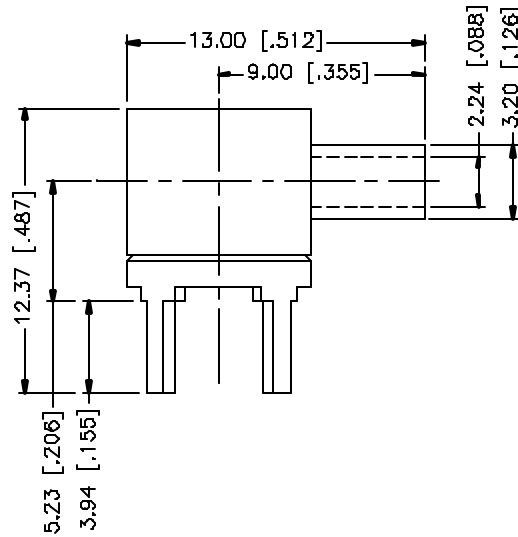
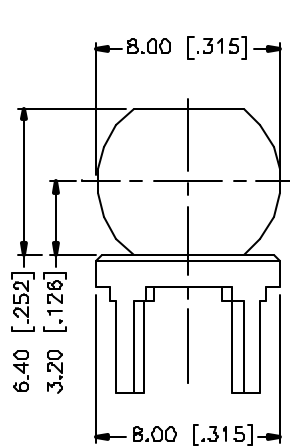
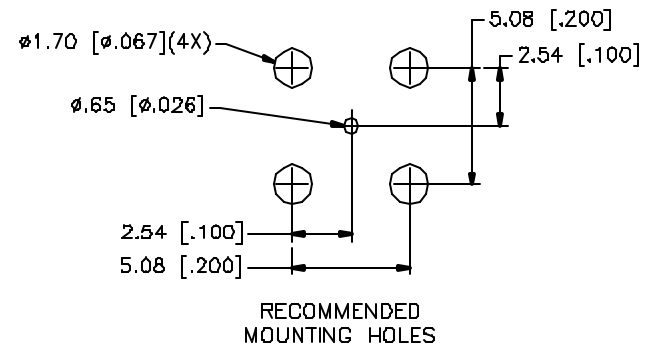


REV.	DATE	DESCRIPTION
NC	04/03/05	INITIAL RELEASE



RECOMMENDED
CABLE STRIPPING DIM'S



RECOMMENDED
MOUNTING HOLES

8				
7				
6				
5				
4				
3				
2				
1	BODY	BRASS	GOLD	1
	DESCRIPTION	MATERIAL	FINISH	QTY

UNLESS OTHERWISE SPECIFIED DIMENSIONS ARE IN MILLIMETERS. DIMENSIONS IN [] ARE IN INCHES AND FOR CUSTOMER REFERENCE ONLY.

UNLESS OTHERWISE SPECIFIED TOLERANCES FOR MILLIMETERS ARE:
0.5 - 3mm ± 0.20mm
3 - 30mm ± 0.40mm
30 - 120mm ± 0.50mm

UNLESS OTHERWISE SPECIFIED TOLERANCES FOR INCHES ARE:
.020 - .315 = ± 0.007"
.315 - 1.180 = ± 0.015"
1.180 - 4.724 = ± 0.020"

DO NOT SCALE DRAWING

APPROVALS		DATE
DRAWN	G.R.S.	04/03/05
CHECKED		
ISSUED		
SHEET	1 OF 1	
CAD FILE	C:/142/142332.DWG	

Amphenol Connex

PART DESCRIPTION

R/A PCB CABLE TERMINAL
(FOR .085" SEMI RIGID CABLE)

PART NO.

142332

DWG. NO.

142332.DWG

REV.

NC

SIZE

A

SCALE

NA