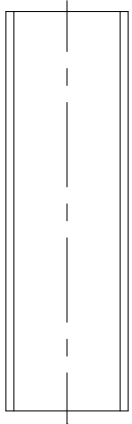
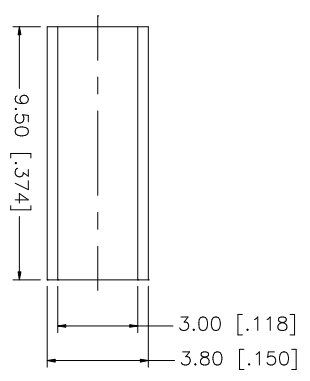
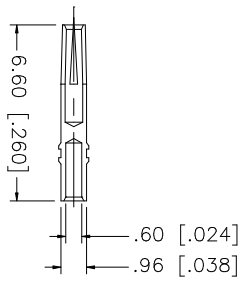
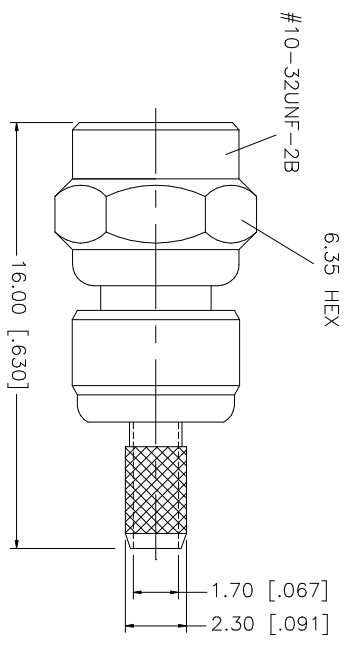
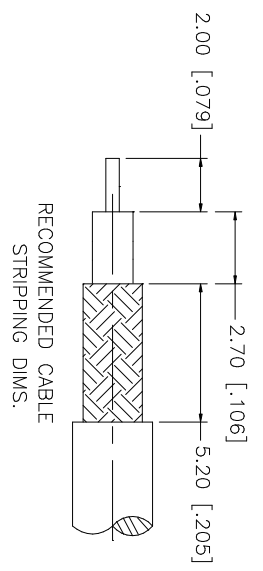


REV.	DATE	DESCRIPTION
A	01/30/04	UPDATE DRAWING FORMAT



CRIMP NOTES:
 1. CRIMPED FERRULE
 HEX CRIMP SIZE .128"
 2. CONTACT PIN TO SOLDER

Amphenol Connex

PART DESCRIPTION
 SMC CRIMP PLUG
 (RG-174/U, 188A/U, 316/U CABLE)

UNLESS OTHERWISE SPECIFIED DIMENSIONS ARE IN MILLIMETERS DIMENSIONS IN [] ARE IN INCHES AND FOR CUSTOMER REFERENCE ONLY.	UNLESS OTHERWISE SPECIFIED TOLERANCES FOR MILLIMETERS ARE:	UNLESS OTHERWISE SPECIFIED TOLERANCES FOR INCHES ARE:	APPROVALS	DATE	DWG. NO.	REV.	SIZE	SCALE
	0.5 - 8mm ± 0.20mm	.020 - .315 = ± 0.007"	DRAWN	01/30/04	C:/152/152101.DWG	A	A	NA
	8 - 30mm ± 0.40mm	.315 - 1.180 = ± 0.015"	CHECKED					
	30 - 120mm ± 0.50mm	1.180 - 4.724 = ± 0.020"	ISSUED					
1	HEAT SHRINK TUBE		SHEET	1 OF 1				
2	FERRULE							
3	CONTACT PIN							
4	INSULATOR							
5	BODY							
6	DESCRIPTION							
7	MATERIAL							
8	FINISH							
9	QTY							