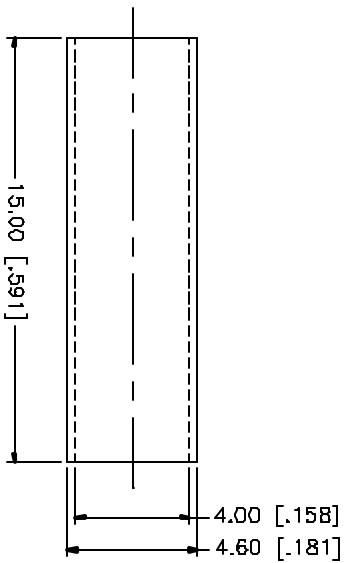
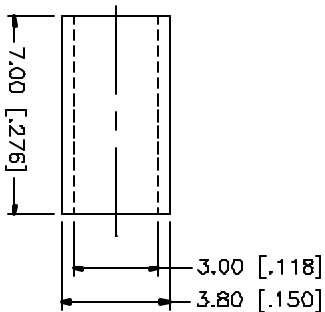
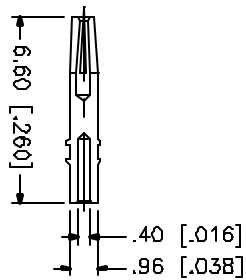
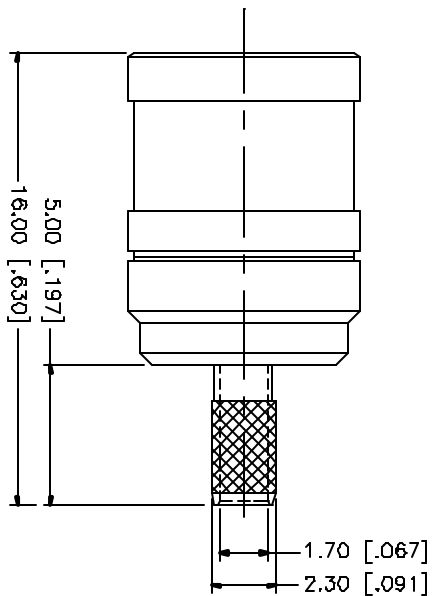
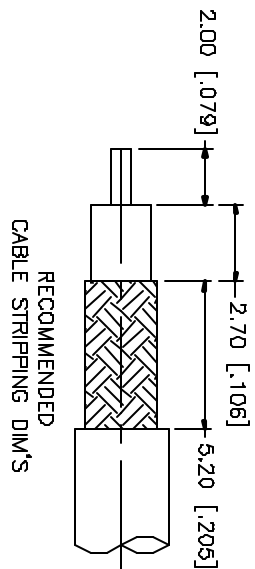


REV.	DATE
A	01/14/04

DESCRIPTION
UPDATE DRAWING FORMAT



NOTE:
1. CRIMPED FERRULE
HEX CRIMP SIZE .128"
2. CONTACT PIN TO SOLDER.

USE THE FOLLOWING APPROVED DIMENSIONS FOR ALL ELECTRICAL DIMENSIONS IN THIS DRAWING UNLESS OTHERWISE SPECIFIED OTHERWISE DIM'S. ALL DIMENSIONS SHOWN UNLESS OTHERWISE SPECIFIED DIMENSIONS FOR ELECTRICAL ARE 0.15 - 8mm ± 0.20mm 8 - 30mm ± 0.40mm 30 - 120mm ± 0.50mm USE THE FOLLOWING APPROVED DIMENSIONS FOR MECHANICAL ARE: .020 - .315 ± ± 0.007" .315 - 1.180 ± ± 0.015" 1.180 - 4.724 ± ± 0.020" DO NOT SCALE DRAWING				APPROVALS	DATE	PART DESCRIPTION		
8			DRAWN	G.R.S.	01/14/04	Amphenol Connex		
7			CHECKED			SMB CRIMP PLUG		
6	HEAT SHRINK TUBE		ISSUED			(FOR RG-179/U, 187A/U)		
5	FERRULE	COPPER	SHEET	1 OF 1		PART NO. 142103		
4	CONTACT PIN	BER, COPPER	DWG. NO.			142103.DWG		
3	INSULATOR	TEFLON	REV. A			SIZE A		
2	BODY	BRASS	SCALE			NA		
1	DESCRIPTION	MATERIAL	FINISH	QTY				