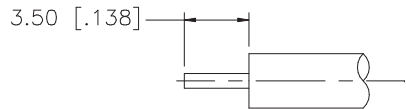
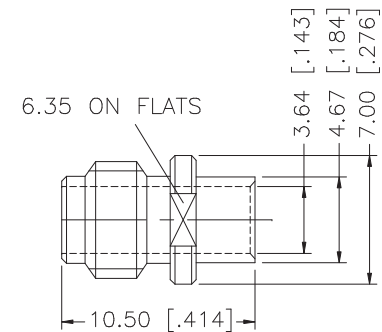
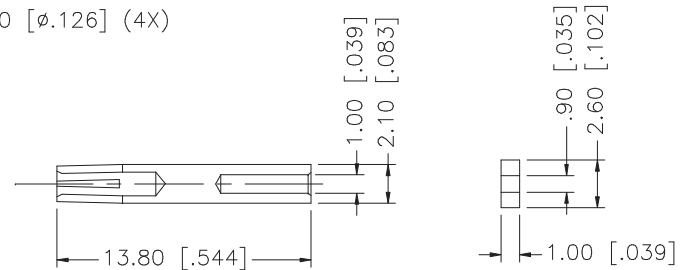
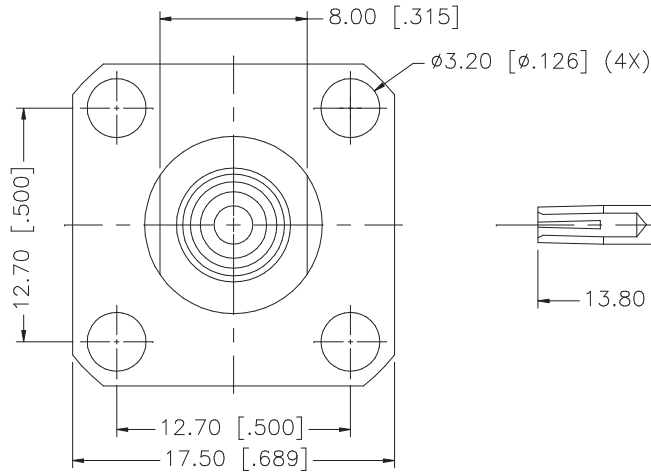
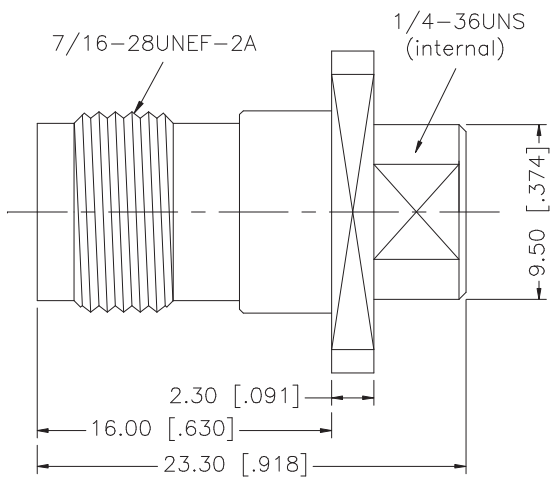


REV.	DATE	DESCRIPTION
A	01/24/06	ADD 50ohm TO DESCRIPTION / UPDATE DRAWING FORMAT



RECOMMENDED  
CABLE STRIPPING DIM'S



UNLESS OTHERWISE SPECIFIED DIMENSIONS ARE IN MILLIMETERS. DIMENSIONS IN [ ] ARE IN INCHES AND FOR CUSTOMER REFERENCE ONLY.

UNLESS OTHERWISE SPECIFIED TOLERANCES FOR MILLIMETERS ARE:  
0.5 - 8mm ± 0.20mm  
8 - 30mm ± 0.40mm  
30 - 120mm ± 0.50mm

UNLESS OTHERWISE SPECIFIED TOLERANCES FOR INCHES ARE:  
.020 - .315 = ± 0.007"  
.315 - 1.180 = ± 0.015"  
1.180 - 4.724 = ± 0.020"

DO NOT SCALE DRAWING

APPROVALS		DATE
DRAWN	G.R.S.	01/24/06
CHECKED		
ISSUED		
SHEET	1 OF 1	
CAD FILE	C:/122/122419.DWG	

# Amphenol Connex

PART DESCRIPTION			
TNC PANEL DIRECT SOLDER JACK - 50ohm (.141 SEMI RIGID CABLE)			
PART NO.			
122419			
DWG. NO.	122419.DWG	REV.	A
SIZE	A	SCALE	NA

DESCRIPTION	MATERIAL	FINISH	QTY
8			
7			
6			
5			
4	SOLDER NUT	BRASS	GOLD 1
3	CONTACT PIN	PHOS. BRONZE	GOLD 1
2	INSULATOR	TEFLON	NATURAL 1
1	HOUSING/BODY	BRASS	NICKEL 1