

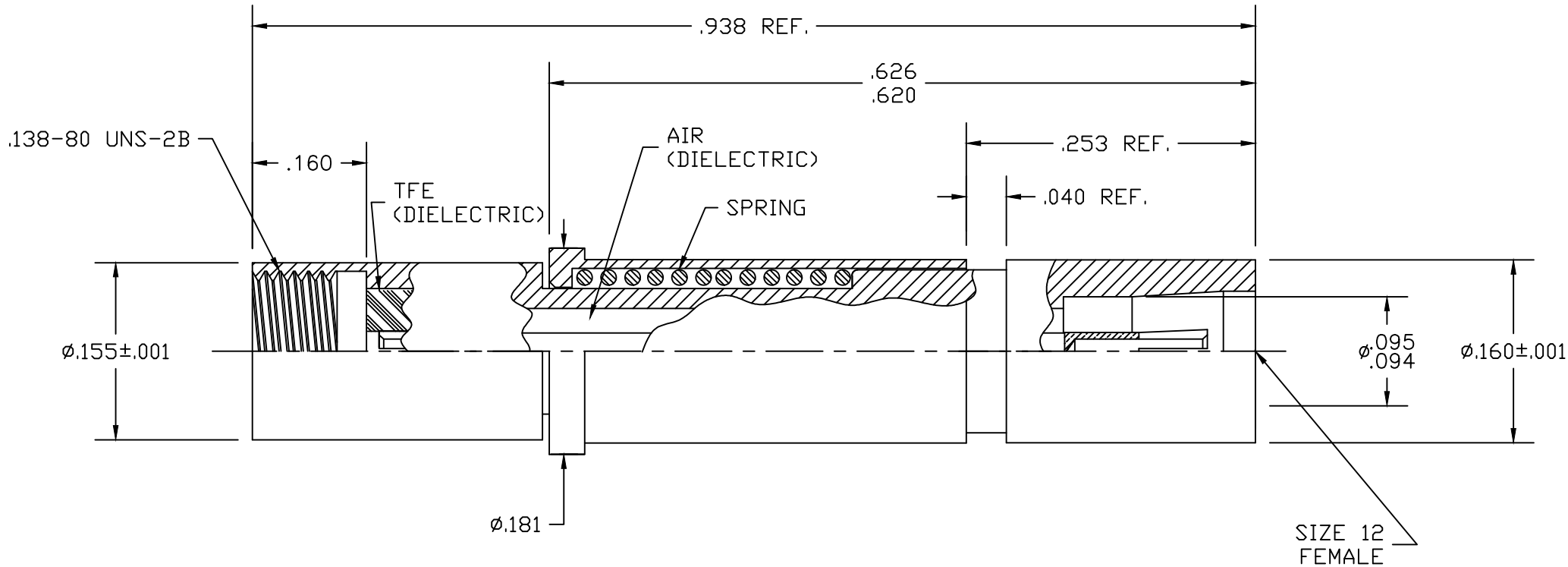
MATERIAL:  
 BODY AND CONTACT  
 BE. CU. QQ-C-530, ALY. 173  
 DIELECTRIC, TFE MIL-P-19468  
 SPRING, MUSIC WIRE PER QQ-W-470

TEMP RANGE: -55° C TO + 100° C.  
 TORQUE: 8-10 INCH LBS  
 INSERTION LOSS .05(SQRT(F<GHZ>>>))

99-000-4036-00

FINISH:  
 GOLD PLATE PER MIL-G-45204, TYPE 1,  
 GRADE C, CLASS 2, OVER NICKEL QQ-N-290

FREQUENCY RANGE: DC to 18 GHz



LTR	DATE	APPR.	DRAWN JDM	CHECKED	USED ON	SRI CONNECTOR GAGE CO. 751 NORTH DRIVE MELBOURNE FL. 32934		
-	REL	10/98	APPR.	SCALE 5X	99-000-4036-00	TITLE SIZE 12 FEMALE SPRING LOAD CONNECTOR		
A	ECN. 1295	10/98	UNLESS OTHERWISE SPECIFIED: 1. REMOVE ALL BURRS 2. BREAK ALL CORNERS & EDGES .005 R. MAX 3. CHAMFER 1st & LAST THREADS 45° 4. SURFACE ROUGHNESS 63 MIL-STD-10 5. DIAMETERS ON COMMON CENTERS TO BE CONCENTRIC WITHIN T.I.R. 6. ALL DIMENSIONS ARE AFTER PLATING		MATERIAL			
			DIMENSIONS ARE IN INCHES TOLERANCES		FINISH	SHEET 1 DWG. NO. 99-000-4036-00		
		DECIMALS	FRACTIONAL	ANGULAR	SIZE			FSCM NO.
		.X ±.030 .XX ±.015 .XXX ±.005	± 1/64	.X° ±1'0" .X°X' ±15'	A			QHMO1