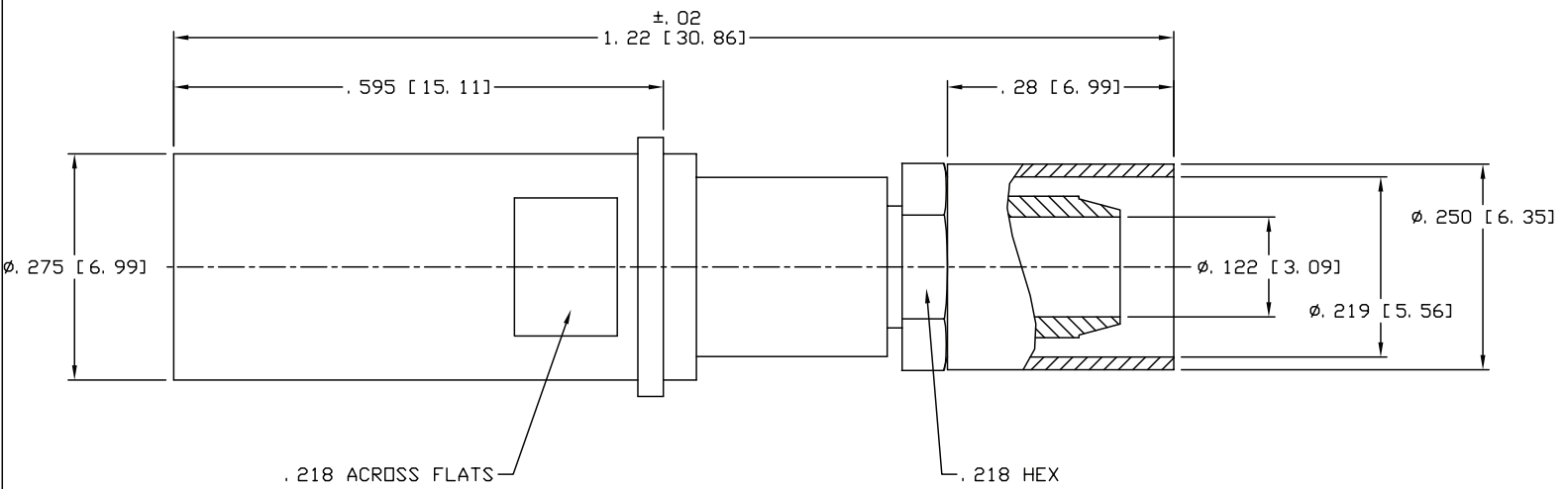


CAD DRAWING - NO MANUAL REVISIONS



NOTES:

1. FOR USE IN ARINC 600 CONNECTOR PER MIL-C-83527/3 AND INSERT PER MIL-STD-1842, 11-20T4 OR 11-20T6.
2. INSERTION/WITHDRAWAL TOOL T 0617 REQUIRED TO INSERT AND REMOVE CONTACT FROM HOUSING.
3. ACCOMMODATES RG-55A, RG-142, RG-223 AND TIMES AA-6597 CABLES.
4. CRIMP USING .213 HEX DIE (M22520/5-05).
5. DESIGN AND INTERFACE PER I. D. S. -68.

E	PER ECN 9688	12/09/08	JEM	PALCO CONNECTOR 22 GREAT HILL RD., NAUGATUCK, CT 06770 UNLESS OTHERWISE SPECIFIED, PALCO WORKMANSHIP STANDARDS APPLY TOLERANCES ON: DECIMALS: XX ±.01 .XXX ±.005 ANGLES ±1/2° 32' DIMENSIONS IN INCHES OR (METRIC) DO NOT SCALE PRINTS EPR 5919	DRAWN	CHECKED	ENGINEER	APPROVED	FSCM
D	PER ECN 8031	06/16/05	JM		JEM	HN	JEM	HN	58167
C	PER ECN 3826	04/09/97	HN		DESCRIPTION PKZ, STR. RECT. CRIMP TYPE FOR ARINC	DATE	DRAWING NO.	PLATING OPT.	
B	PER ECN 3655	11/18/96	HN			02/28/95	68-1080-1201	A, B, C, D	
A	RELEASED	02/28/95	HN						
REV.	DESCRIPTION	DATE	APPR.						

THE INFORMATION IN THIS DOCUMENT IS CONFIDENTIAL AND PROPRIETARY AND MAY NOT BE USED FOR ANY PURPOSE WITHOUT THE WRITTEN CONSENT OF PALCO.