

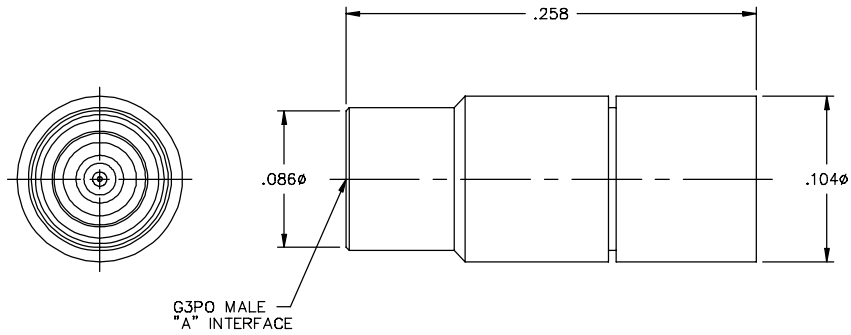
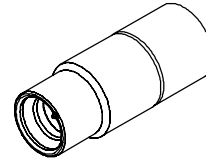
DATE REVISED: 8/27/05

CATALOG NUMBER	"A" INTERFACE
R055-A13-01	FULL DETENT
R055-A15-01	SMOOTH BORE

MATERIAL AND FINISH

PIN, END CAP
AND HOUSINGS:
DIELECTRIC:

BeCu: GOLD PLATE 50-100 MICROINCHES
OVER NICKEL PLATE 50 MICROINCHES MIN.
VIRGIN PTFE



This drawing and any data contained herein is the property of Corning Gilbert Inc., and constitutes and contains proprietary and confidential information. Neither receipt nor possession of this drawing confers or transfers any right to duplicate, use or disclose any information contained herein except as expressly authorized by Corning Gilbert Inc.

G3PO MALE LOAD (TAB DETENT)	IDENT CODE: 82316	Corning Gilbert Inc.
	REVISION: A	
SOURCE FILE: SK-2383	DWG. NO.: OL-R055-A1X-01	ASSY. PROC.: -