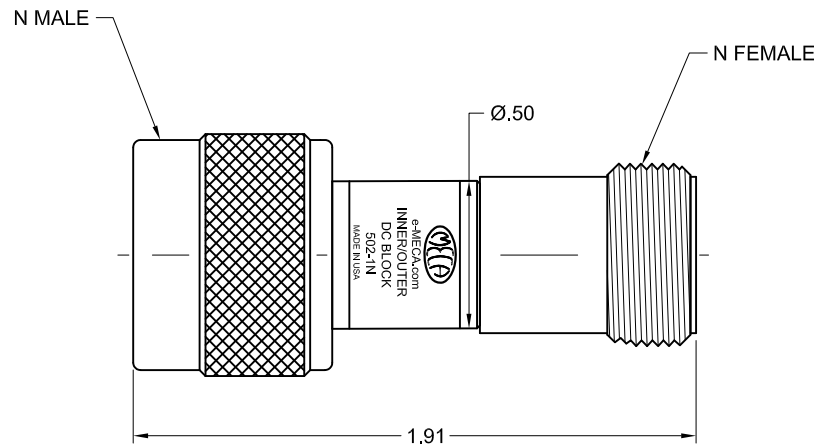


# ELECTRICAL SPECIFICATIONS

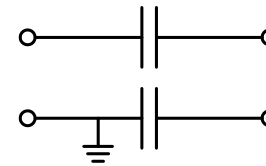
FREQUENCY RANGE: 0.010 - 18.000 GHz  
 IMPEDANCE (NOMINAL): 50 Ohms  
 VSWR (MAX): 1.35:1  
 INSERTION LOSS (dB): 0.50 TYP/0.60 MAX.  
 VOLTAGE RATING: 200 Volts MAX.  
 POWER (AVG): 100 Watts


# MECHANICAL SPECIFICATIONS

CONNECTORS: STAINLESS STEEL, PASSIVATE  
 CONTACT PINS: BERYLLIUM COPPER, GOLD PLATE  
 HOUSING: HIGH TEMPERATURE PLASTIC  
 INSULATORS: PTFE, VIRGIN ELECTRICAL GRADE  
 OPERATING TEMP: -55°C TO +85°C  
 WEIGHT (MAX): 1.80 oz



SCHEMATIC:



					MATERIAL: SEE ABOVE	UNLESS OTHERWISE SPECIFIED, DIMENSIONS ARE IN INCHES		 <b>ELECTRONICS, INC.</b> DENVER, NEW JERSEY e-MECA.com		
					FINISH: SEE ABOVE	TOLERANCES 2 PLACES: ±.02 3 PLACES: N/A ANGLES: N/A				
E		SEE DCN # 121019-2	10/29/12	NL	RR	DRAWN: NL		TITLE INNER/OUTER DC BLOCK		
D		SEE DCN # 110315-2	03/17/11	JT	EB	DATE: 03/08/07	TIR: N/A			
C		SEE DCN # 071211-10	12/12/07	GQ	RR	APPROVED: RR	DATE: 03/08/07			
LTR	PG	DESCRIPTION	DATE	DR	APP	SCALE: NTS	SIZE <b>A</b>	CAGE CODE NO. 22424	DRAWING NO. 502-1N	REV <b>E</b>
						SHEET: 1 OF 1				