

Broadband DC BLOCKs



TM *Optid* DC BLOCKs

Specially Suitable for High-speed optical communications

- *Low insertion loss (< 1.5 dB upto 26.5GHz)*
- *Excellent Return loss*
- *Ultra-wide bandwidth*

Specifications

Model	Optid-16K
Max DC Voltage	16 V DC
Freq. Range (3 dB BW)	16 kHz to 26.5 GHz
Insertion Loss	-1.0 dB max < 12GHz -1.5 dB max < 26.5GHz
Return Loss	-15 dB max < 26.5GHz
Impedance	50 Ohm
Temp. Coefficient	+/-15% -55c, +125C
Dimensions	15 × 18.7 × 9.4 mm (case)
Connectors	RF In : 3.5 mm SMA RF Out : 3.5 mm SMA

*** Both types of male and female connectors are available.**



Excellence and Innovation
in RF & Microwave Components

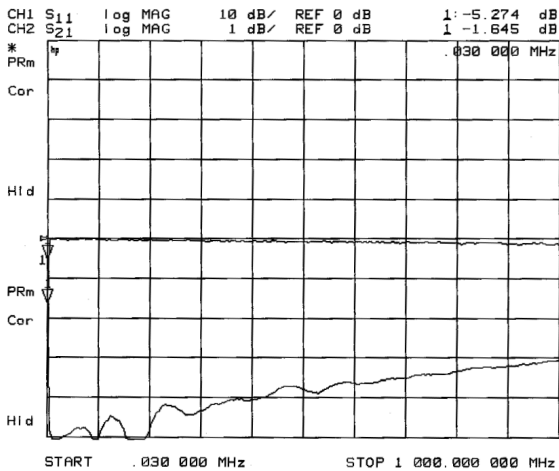
www.gigalane.com

Suite 703, Kyonggi Venture Bldg
Suwon Center 1017 Inkye-dong, Paldal-gu
Suwon, Kyonggi-do, 442-833, Korea
TEL:+82-31-233-7325
TEL +82-31-233-7317

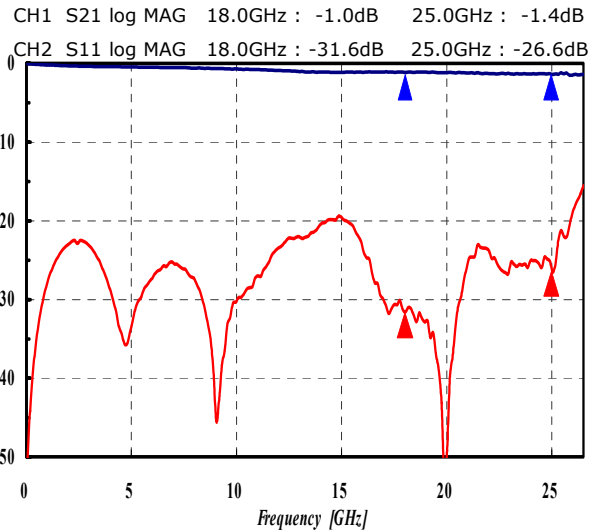
Broadband DC BLOCKs

Typical Frequency Domain Response

Low Frequency Response



High Frequency Response

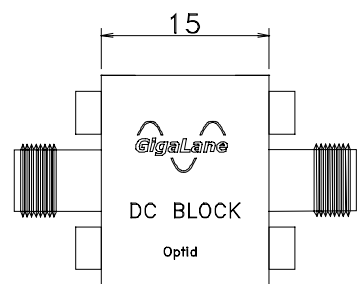
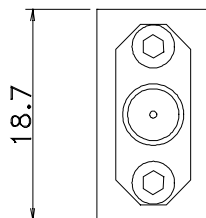


Notes

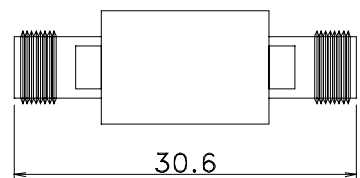
- [1] Parameters listed are typical value. They are guaranteed only when maximum/minimum limits are given
- [2] Frequency response measured using HP8722ES network analyzer from 50 MHz to 26.5 GHz.
- [3] Low Frequency response measured using HP8753D network analyzer from 30 KHz to 1 MHz.

Applications

- Test and Measurement instrumentation
- High Speed Pulse Testing
- Telecom Systems



Mechanical Drawing



Excellence and Innovation
 in RF & Microwave Components

www.gigalane.com

Suite 703, Kyonggi Venture Bldg
 Suwon Center 1017 Inkye-dong, Paldal-gu
 Suwon, Kyonggi-do, 442-833, Korea
 TEL:+82-31-233-7325
 TEL +82-31-233-7317