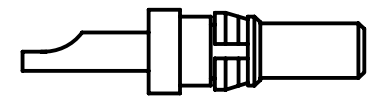
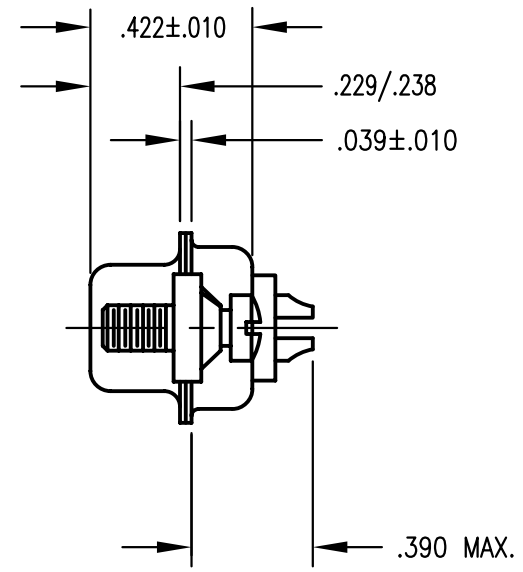
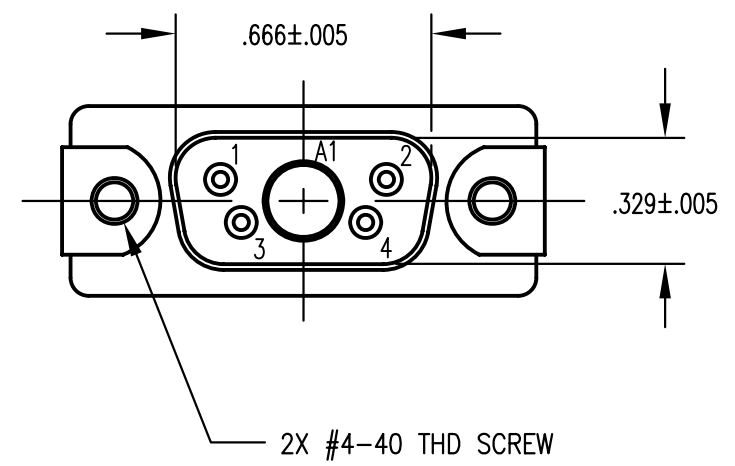


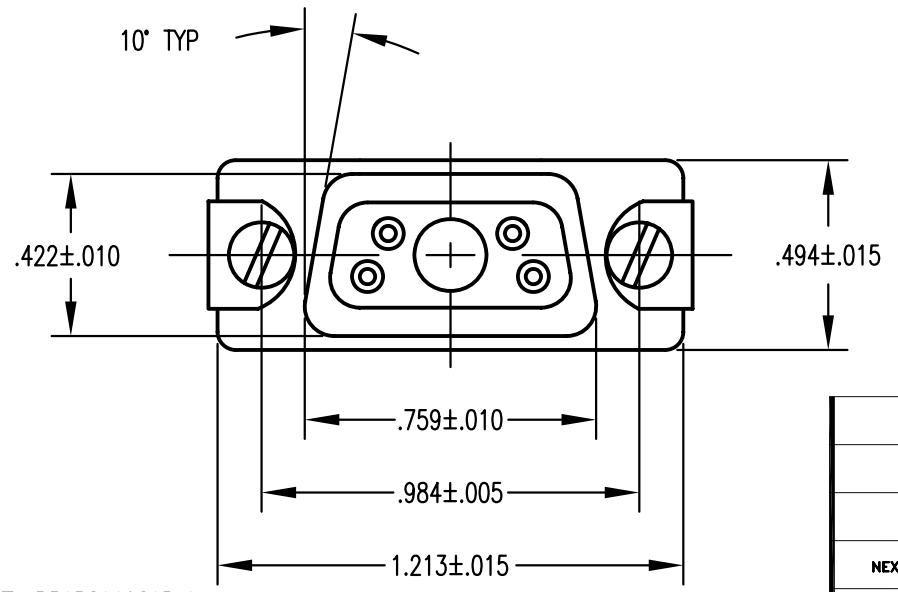
SPECIFICATIONS:

- 1) MATERIALS:  
 CONTACTS: COPPER ALLOY, PER ASTM B140 OR QQ-B-626  
 INSERT: VALOX, TYPE GPT-30F, PER MIL-M-24519  
 SHELLS: COLD ROLLED STEEL, PER ASTM A568 AND ASTM A620
- 2) FINISHES AND COLOR:  
 CONTACTS: GOLD, .000050 THICK, PER MIL-G-45204;  
 OVER NICKEL, .000 200 THICK, PER QQ-N-290  
 INSERT: BLACK  
 SHELLS: YELLOW CHROMATE OVER ZINC, PER ASTM B633
- 3) ELECTRICAL PROPERTIES:  
 CURRENT RATING: 7.5 AMPS (20 GAUGE CONTACTS)  
 DIELECTRIC STRENGTH: 500 TO 1,000 VOLTS RMS AT SEA LEVEL;  
 200 TO 325 VOLTS RMS AT 70,000 FEET  
 INSULATION RESISTANCE: 1 MEGOHM MINIMUM
- 4) MECHANICAL PROPERTIES:  
 CONTACT ENGAGEMENT: 12.0 OUNCES MAXIMUM WITH MAXIMUM DIAMETER PIN  
 CONTACT RETENTION: 9.0 POUNDS MINIMUM AXIAL FORCE  
 CONTACT SEPARATION: .6 OUNCES MINIMUM WITH MINIMUM DIAMETER PIN  
 OPERATING TEMPERATURE: -67°F TO +257°F (-55°C TO +125°C)  
 SHOCK RESISTANCE: NO INTERRUPTION OF ELECTRICAL CONTINUITY LONGER THAN 1 MICROSECOND  
 VIBRATION RESISTANCE: NO INTERRUPTION OF ELECTRICAL CONTINUITY LONGER THAN 1 MICROSECOND
- 5) DIMENSIONS ARE FOR REFERENCE ONLY, UNLESS OTHERWISE SPECIFIED
- 6) CONNECTOR MEETS REQUIREMENTS OF MIL-C-24308, LATEST REVISION.
- 7) ABOVE REQUIREMENTS DO NOT INCLUDE PDM AND PKZ CONTACTS, PLEASE SEE INDIVIDUAL SPECIFICATION SHEETS.

| REVISIONS |                        |         |          |
|-----------|------------------------|---------|----------|
| REV.      | DESCRIPTION            | DATE    | APPROVED |
| A         | RELEASED TO PRODUCTION | 3/12/07 | IRL      |



1500200003A 10 AMP CONTACT (1)  
 (NOT INSTALLED IN CONNECTOR,  
 SUPPLIED & PACKAGED SEPARATELY)



FILE NAME: P51PSA19SAP.dwg

| QTY REQD  | FSCM NO. | PART OR IDENTIFYING NO.   | NOMENCLATURE OR DESCRIPTION  | MATERIAL SPECIFICATION                            | ITEM         |
|---|----------|---|--|---|--------------|
| PARTS LIST  |          |   |  |   |              |
| UNLESS OTHERWISE SPECIFIED DIMENSIONS ARE IN INCHES TOLERANCES ARE:<br>FRACTIONS DECIMALS ANGLES<br>$\pm 1/64$ .XX $\pm .01$ $\pm 1/2^\circ$<br>.XXX $\pm .003$ |          |   | <b>The PHOENIX Company of Chicago</b> ™  |   |              |
|   |          |   | DSUB CONN.; 5W1 PLUG, SC CONT, 50μ GOLD, MALE SCRLKS, 10 A HP PDM, YLCROM/ZINC |   |              |
| CONTRACT NO.  |          | APPROVALS<br>DRAWN I. Littman 03/12/07<br>CHECKED C. Velasco 03/15/07<br>ISSUED |  | DATE  |              |
| NEXT ASSEMBLY   |          | USED ON   |  | SIZE B FSCM NO. 60563 DWG. NO. P51PSA19SAP REV. A |              |
| APPLICATIONS  |          |   | DO NOT SCALE DRAWING   |   |              |
|   |          |   | SCALE NONE   |   | SHEET 1 OF 1 |