

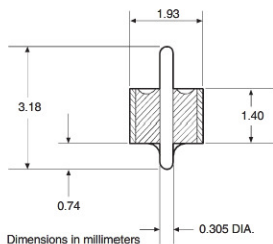
K CONNECTOR®

DC to 40 GHz



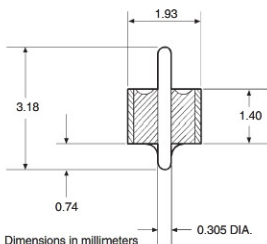
K100^{①②}

Glass Beads for K102, K103, and K104 connectors
 Note: Glass Beads are not available through Anritsu.
 They can be purchased from Advanced Technology Group,
 101 Roundhill Drive, Rockaway, New Jersey 07866
 Tel: 973-627-6955, Fax: 973-627-5980
 www.advtechgr.com



K100B^{①②}

High Hermeticity* Glass Beads for K102, K103,
 and K104 connectors
 Note: Glass Beads are not available through Anritsu.
 They can be purchased from Advanced Technology Group,
 101 Roundhill Drive, Rockaway, New Jersey 07866
 Tel: 973-627-6955, Fax: 973-627-5980
 www.advtechgr.com

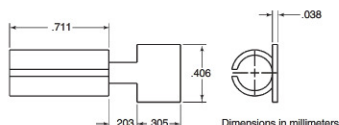
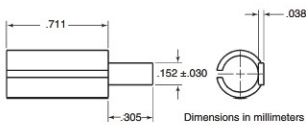


*Glass Bead Hermeticity Spec: Hermetic to 1×10^{-8} std cc He/sec at 1 atm differential

Stress relief contacts

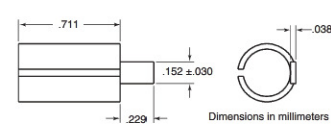
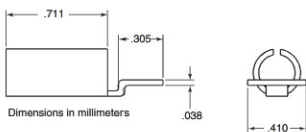
Stress Relief Contacts provide an elegant yet simple solution to relieving stress at the interface of the microcircuit and its connecting coaxial conductor. These contacts simply slide onto the standard K100 and K100B glass bead pins.

Frequency range	DC to 40 GHz
Material	0.025 mm heat-treated BeCu
Plating	Bondable gold over nickel



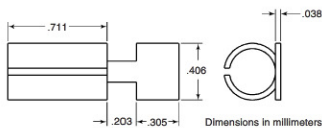
K110-1-R^{*} Microstrip and Coplanar Waveguide

K110-3-R^{*} Microstrip



K110-2-R^{*} Stripline

S110-1 Microstrip and Coplanar Waveguide for 0.38 mm glass feedthru center conductor



S110-3 Microstrip and Coplanar Waveguide for 0.38 mm glass feedthru center conductor

Ordering information

Please specify model/order number, name, and quantity when ordering.

Model/Order No.	Name
01-101A	K Connector® (evaluation kit)
01-103	Soldering fixture for sparkplug launcher glass bead
01-104	Drill and tap set
01-105A	Male and female sparkplug torquing kit
01-106	Soldering fixture for flange launcher glass bead
01-107F	Cable sleeve soldering fixture, female connector
01-107M	Cable sleeve soldering fixture, male connector
01-108	Drill and tap set
01-118	Cable assembling fixture for K118 semi-rigid coax cable
01-201	Torque wrench, for SMA, 3.5mm, and K Connector and V Connector
01-204	Anritsu stainless steel connector wrench
K110-1-R*	Microstrip stress relief contact
K110-2-R*	Stripline stress relief contact
K110-3-R*	Microstrip stress relief contact
K101M-R	K(m) in-line cable connector, DC to 40 GHz for K118 cable
K101M-085-R	K(m) in-line cable connector, DC to 40 GHz for V085 cable
K101F-R	K(f) in-line cable connector, DC to 40 GHz
K102M-R	K(m) sparkplug launcher connector, DC to 40 GHz
K102F-R	K(f) sparkplug launcher connector, DC to 40 GHz
K103M-R	K(m) flange launcher connector, DC to 40 GHz, 2 mounting holes
K103F-R	K(f) flange launcher connector, DC to 40 GHz, 2 mounting holes
K104M-R	K(m) flange launcher connector, DC to 40 GHz, 4 mounting holes
K104F-R	K(f) flange launcher connector, DC to 40 GHz, 4 mounting holes
K118	Coaxial cable, 1.5m of 3.00 mm semi-rigid cable for K101 series connector
S110-1*	Microstrip and coplanar waveguide stress relief contact for 0.38 mm glass feedthru center conductor
S110-3*	Microstrip and coplanar waveguide stress relief contact for 0.38 mm glass feedthru center conductor

*Sold in multiples of 10 only.

① Use with 01-108 Drill and Tap Set