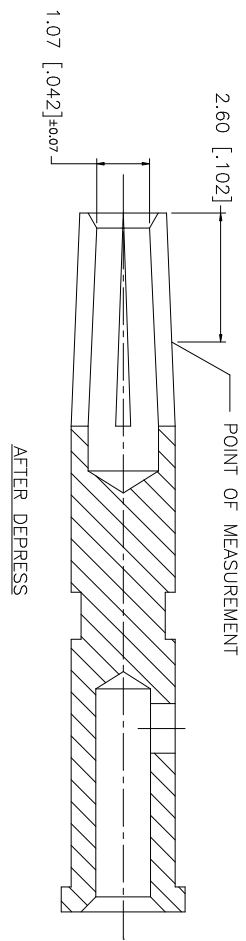
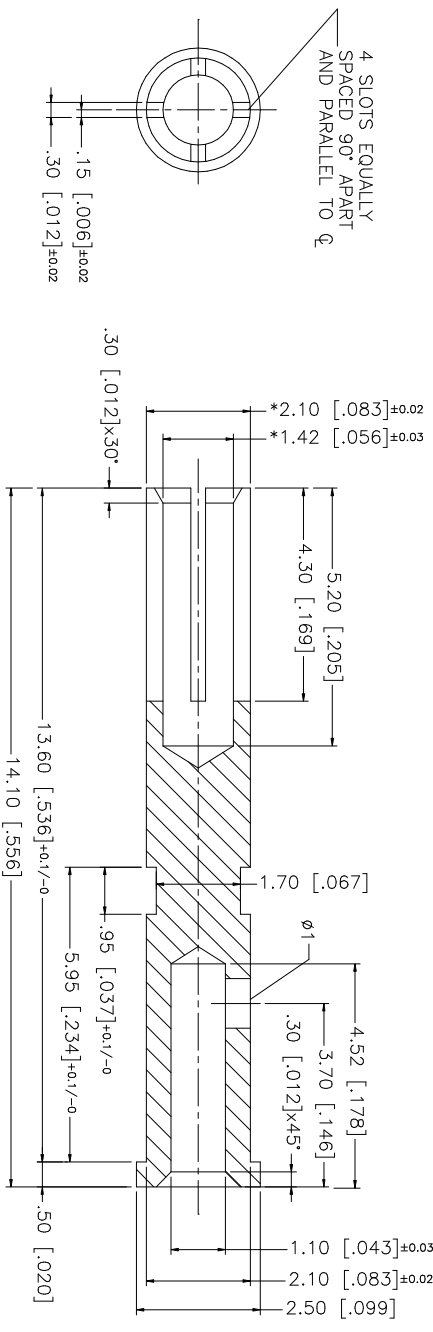


REV.	DATE	DESCRIPTION
NC	02/23/03	INITIAL RELEASE



REV.	DATE	DESCRIPTION
8		
7		
6		
5		
4		
3		
2		
1		

DESCRIPTION	MATERIAL	FINISH	QTY
CONTACT PIN	PHOS. BRONZE	GOLD	1

APPROVALS	DATE
DRAWN G.R.S.	02/23/03
CHECKED	
ISSUED	
SHEET 1 OF 1	

UNLESS OTHERWISE SPECIFIED DIMENSIONS ARE IN MILLIMETERS. DIMENSIONS IN ( ) ARE IN INCHES AND FOR CUSTOMER REFERENCE ONLY. TOLERANCES FOR MILLIMETERS ARE:
0.5 - 8mm $\pm 0.20$ mm
8 - 30mm $\pm 0.40$ mm
30 - 120mm $\pm 0.50$ mm
UNLESS OTHERWISE SPECIFIED DIMENSIONS ARE IN INCHES. TOLERANCES FOR INCHES ARE:
.020 - .315 = $\pm 0.007$ "
.315 - 1.180 = $\pm 0.015$ "
1.180 - 4.724 = $\pm 0.020$ "
DO NOT SCALE DRAWING

CAD FILE	DWG. NO.	REV.	SIZE	SCALE
C:/MISC/112_122_FEM.DWG	112_122_FEM.DWG	NC	A	NA

PART DESCRIPTION	PART NO.
<b>Amphenol Connex</b>	112/122-1.1-FEM
BNC/TNC FEMALE CONTACT PIN	
( $\phi 1.1$ mm I.D.)	