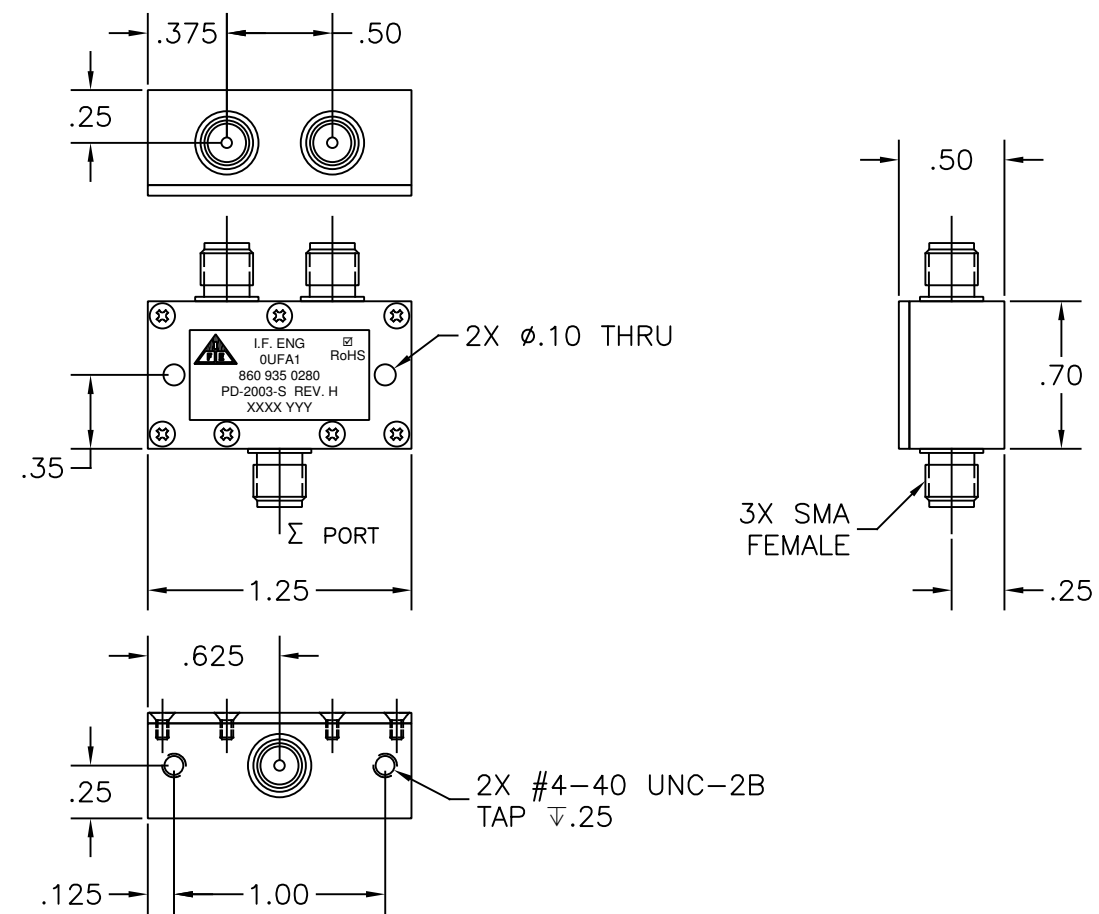


THIS DOCUMENT CONTAINS PROPRIETARY INFORMATION. ANY REPRODUCTION, DISCLOSURE, OR USE OF ITS CONTENTS IS EXPRESSLY PROHIBITED EXCEPT AS AUTHORIZED BY I.F. Engineering Corp

| REVISION |  |          |        |
|----------|--|----------|--------|
| LTR.     | DESCRIPTION  | DATE     | APPVL. |
| A        | Update   | 9/03     | LCF    |
| B        | Update Chassis   | 1/04     | LCF    |
| C        | Corr Conn  | 10-04    | CL     |
| D        | ADDED LABEL  | 9-05     | RB     |
| E        | ADDED SCREWS   | 9-05     | RB     |
| F        | Redrawn/Updated Format, Rotated Top View, Added .25 Dimension In Side View | 12/27/06 | MJD    |
| G        | CHANGED PER ECN 1234001  | 8/23/12  | MJD    |
| H        | ECO #1703002   | 1/18/17  | MJD    |



| ELECTRICAL SPECIFICATION<br>TWO-WAY POWER DIVIDER |           |
|---|-----------|
| FREQUENCY RANGE (MHZ)                             | 10-500    |
| ISOLATION (dB) MIN.                               | 30        |
| INSERTION LOSS (dB) MAX.                          | 0.65      |
| INPUT POWER (W) MAX.                              | 2         |
| AMPLITUDE BAL. (dB) MAX.                          | $\pm 0.1$ |
| PHASE BAL. ( $^{\circ}$ ) MAX.                    | $\pm 2.0$ |
| VSWR MAX.   |           |
| IN  | 1.3:1     |
| OUT   | 1.3:1     |
| IMPEDANCE (OHMS) NOM.                             | 50        |
| TEMPERATURE RANGE ( $^{\circ}$ C)                 | 0 TO +50  |

- NOTES:
1. MATERIAL: CHASSIS & COVER ALUMINUM
  2. FINISH: CLEAR CHROMATE
  3. APPLY STANDARD MARKING LABEL APPROX. WHERE SHOWN
  4. SPECIFICATION SUBJECT TO CHANGE WITHOUT NOTICE

|                           |   |                             |              |               |
|---------------------------|---|-----------------------------|--------------|---------------|
| <b>RoHS<br/>Compliant</b> | UNLESS OTHERWISE SPECIFIED<br>DRAWING PRACTICES PER<br>ASME Y14.100   |                             | DRAWN<br>LCF | DATE<br>10/96 |
|                           | TOLERANCES ANGLES $\pm 1/2^{\circ}$<br>.XX $\pm 0.01$ .XXX $\pm 0.05$ |                             | ENGRG APPD   | DATE          |
|                           | SURFACE ROUGHNESS $\sqrt{63}$   | REMOVE BURRS<br>SHARP EDGES | MFG APPD     | DATE          |
|                           | MATERIAL: SEE NOTE 1  |                             | QA APPD      | DATE          |
|                           | FINISH: SEE NOTE 2  |                             | RELEASED     | DATE          |

***I F E* ENGINEERING**  
3 FOSHAY ROAD, DUDLEY MA 01571

TITLE  
**OUTLINE DRAWING**  
**PD-2003-S**

|                     |                                |                                   |                  |
|---------------------|--------------------------------|-----------------------------------|------------------|
| SIZE<br><b>A</b>    | CODE IDENT NO.<br><b>OUFA1</b> | DRAWING NO.<br><b>002-078-181</b> | REV.<br><b>H</b> |
| SCALE<br><b>1:1</b> | SHEET <b>1</b> OF <b>1</b>     |                                   |                  |