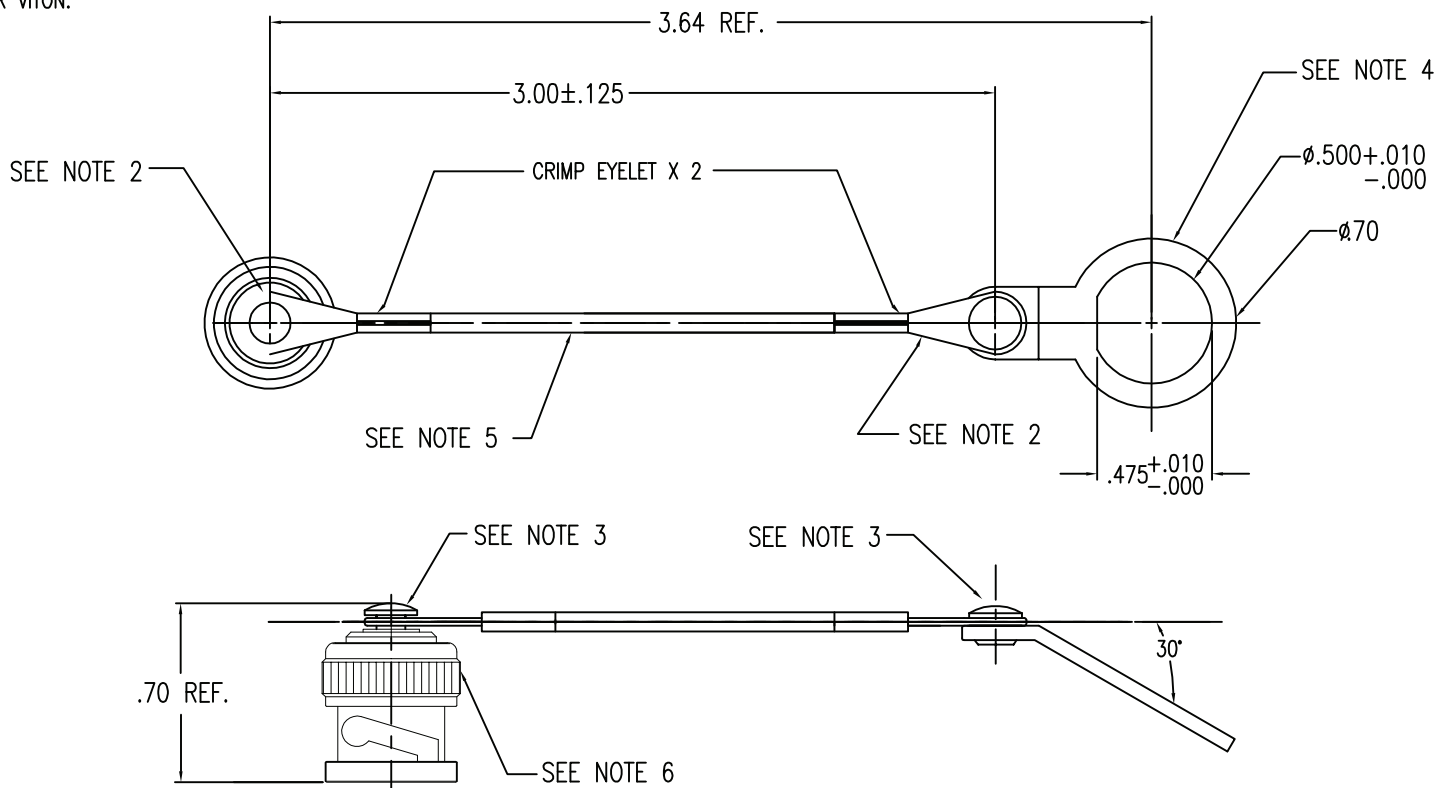


NOTES:

1. TENSILE STRENGTH 45 LBS. MINIMUM.
2. EYELETS: STAINLESS STEEL 303, OLIVE DRAB CHROMATE, .000300 CADMIUM PLATE OVER .000080 NICKEL.
3. RIVETS: STAINLESS STEEL 340, OLIVE DRAB CHROMATE, .000300 CADMIUM PLATE OVER .000080 NICKEL.
4. WASHER: STAINLESS STEEL 303, OLIVE DRAB CHROMATE, .000300 CADMIUM PLATE OVER .000080 NICKEL.
5. WIRE ROPE: MIL-W-83420, 1/32 CORROSION RESISTANT STEEL, DARK OPAQUE NYLON JACKETED, TYPE II, COMPOSITION B.
6. ALL OTHER METAL: BRASS, OLIVE DRAB CHROMATE .000300 CADMIUM PLATE.
7. GASKET: SILICONE RUBBER OR VITON.

DWG NO.	OL-0109-04-1	REV.	C
PART NUMBER	0109-04-D	FINISH	SEE NOTES

PLATING PER STI 7.3.1-8



C	NOTE 4.1: WAS 75 LBS MIN	10/27/17	ST	FSH
B1	ADDED PART NUMBER TABLE	3/5/14	PRS	FSH
B	UPDATED RIVET AND WASHER ALIGNMENT	1/9/08	JTH	FSH
A	ORIGINAL	10/28/05	X	X
Rev.	Revisions	Date	Dwn.	Appd.
STOCK	FT/M PCS	QTY REQD		
STOCK	FTM	QTY		

PROPRIETARY
 THIS DRAWING CONTAINS CONFIDENTIAL INFORMATION PROPRIETARY TO SAN*TRON INC. IT MUST NOT BE REPRODUCED OR DISCLOSED TO OTHERS OR USED IN ANY OTHER WAY, IN WHOLE OR PART EXCEPT AS AUTHORIZED IN WRITING BY SAN*TRON INCORPORATED.

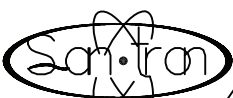
REMOVE ALL BURRS AND SHARP EDGES .005 MAX.
 UNLESS OTHERWISE STATED ALL DIMENSIONS ARE IN INCHES AND APPLY AFTER PLATING

UNSPECIFIED TOL.	DWN	DVP	10/28/05
DEC. ± .005	CHKD	SJS	x
FRAC. ± 1/64	APPR	FSH	10/28/05
ANG. ± 1/2°			

CONCENTRICITY .004 TIR
 ALL MACHINED SUFACES ✓

SAN • TRON, INC.

4 NEWBURYPORT TPK, IPSWICH, MA 01938



TITLE: BNC MALE CAP WITH JACKETED ROPE WIRE

MATERIAL: SEE NOTES FINISH: SEE NOTES

FSCM NO. 50896 DWG NO. OL-0109-04-1 REV. C

DO NOT SCALE PRINT