

SPECIFICATIONS

ELECTRICAL

VSWR \_\_\_\_\_ N/A OPEN CIRCUIT

MATERIALS

CENTER CONTACT \_\_\_\_\_ BERY COPPER ALLOY  
C17200 OR C17300 GOLD PLATED

CONNECTOR BODY \_\_\_\_\_ STAINLESS STEEL IAW A582,  
HOUSING AND COUPLING NUT \_\_\_\_\_ TYPE 303, PASSIVATED

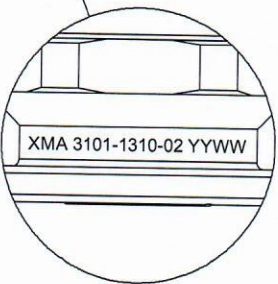
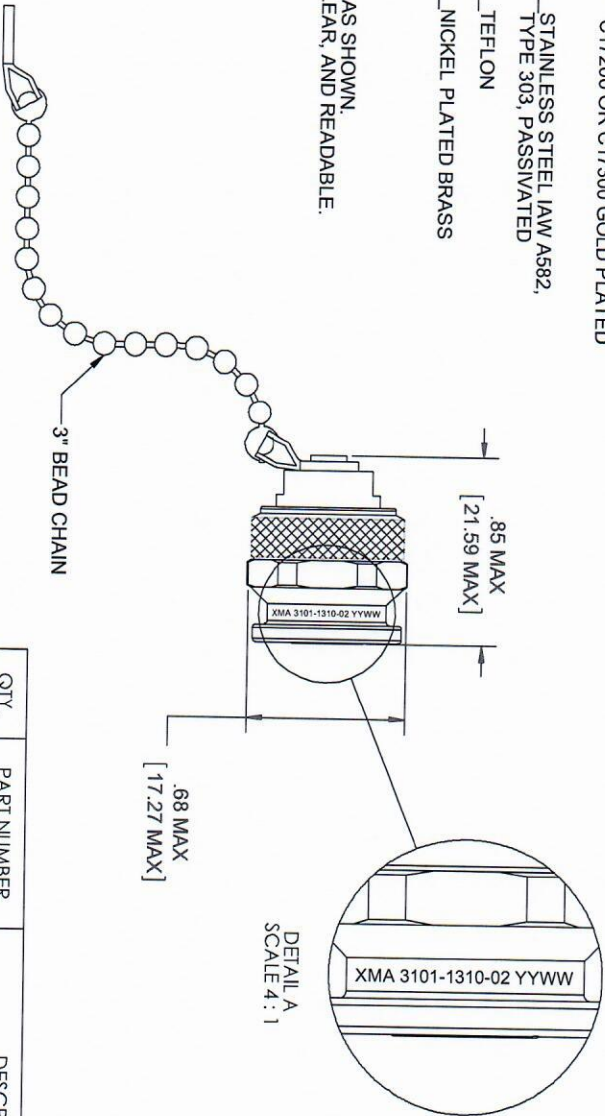
DIELECTRIC \_\_\_\_\_ TEFLON

CHAIN \_\_\_\_\_ NICKEL PLATED BRASS

MARKING

PART LOOKS LIKE PRODUCT IMAGE ABOVE.  
PART MARKING ORIENTATION AND FORMAT AS SHOWN.  
MARKING TO BE AS LARGE AS POSSIBLE. CLEAR, AND READABLE.  
YYWW EQUALS DATE CODE.

REVISIONS				
REV	DESCRIPTION	ECO #	DATE	APPROVED
-	INITIAL RELEASE	14-199	5-6-14	T.KUHN
A	REVISED MARKING LOCATION	15-063	3/12/15	T.KUHN



DETAIL A  
SCALE 4:1

QTY.	PART NUMBER	DESCRIPTION	ITEM NO.
X	3101-1310-02	TNC DUST CAP WITH CHAIN	
1	TA-3101-1310-02U	ASSY. TNC DUST CAP WITH CHAIN, UNMARKED	1

<p>DRAWING PRACTICES PER ANSI Y14.5 MIL-STD-100 &amp; 1000</p> <p>DIMENSIONS ARE IN INCHES AND APPLY BEFORE / AFTER PROCESSING</p> <p>SURFACE FINISH: 63</p> <p>ROUGHERNESS: 63</p> <p>FINISH: XXX</p> <p>SEE NOTES</p> <p>MATERIAL: _____</p> <p>SEE NOTES</p> <p>NOTE: THIS DRAWING INCORPORATES THIRD ANGLE PROJECTION</p> <p>INTERPRET IAW ANSI Y14.5-1982</p>		<p>UNLESS OTHERWISE SPECIFIED TOLERANCES IN: DECIMALS INCH: .05" FRACTIONS INCH: 1/32" ANGLES: ±0°30'</p> <p>REMOVE ALL BURRS/SHARP W/EDGES &amp; CHAMFER UNLESS NOTED DIAS CONCENTRIC &lt;.003 T.I.R.</p> <p>DO NOT SCALE PRINT</p>	
<p>DRAWN: MCCORMICK CHECKED: MCCORMICK ENG. APPR: T.KUHN DATE: 5/6/14</p>	<p>DATE: 5/6/14</p>	<p>THESE DRAWINGS AND SPECIFICATIONS ARE THE PROPERTY OF XMA AND SHALL NOT BE REPRODUCED, COPIED, NOR USED, IN WHOLE OR IN PART, FOR ANY MANUFACTURE OR SALE OF OTHER PRODUCTS WITHOUT THE EXPRESS WRITTEN PERMISSION OF XMA CORP.</p>	
<p><b>XMA</b> <small>DESIGN</small> <small>QUALITY</small> <small>SPECTRUM</small></p> <p>Phone: 603-222-2256 Fax: 603-222-2259 150 Dow Street, Manchester, NH 03101</p>		<p>TITLE: TNC DUST CAP WITH CHAIN</p>	
SIZE: B	GAGE CODE: 3HT76	DRAWING NUMBER: 3101-1310-02	REV: A
SCALE: 2	PLATED AREA SQ. IN: 1	SHEET: 1 OF 1	REV: A



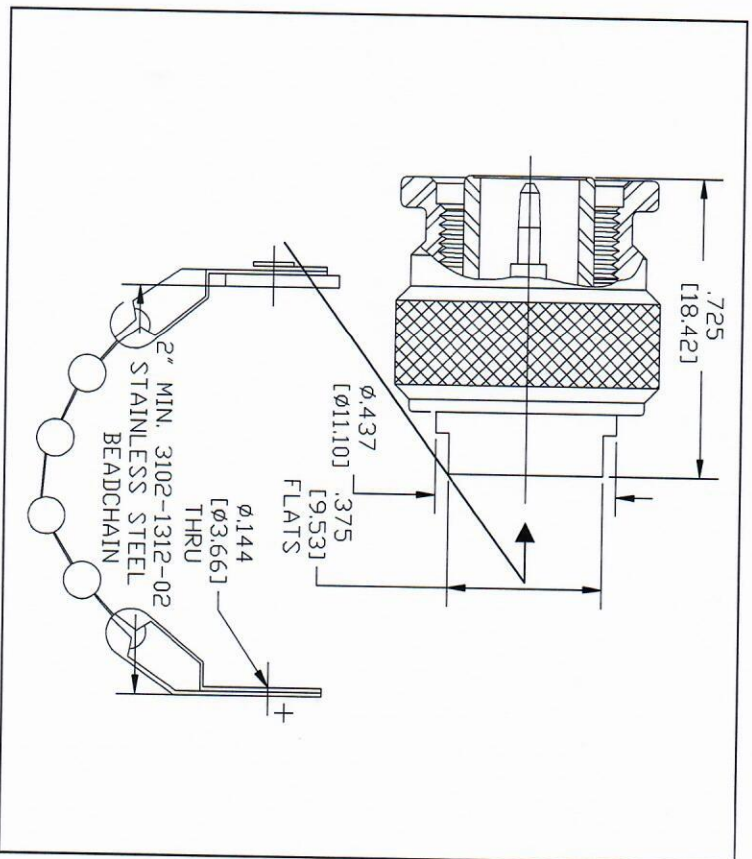
# **3101-1315-02/3101-1310-02** **TNC Male DUST CAP/OPEN**

## Specifications

<b>Electrical:</b>	
Freq. Range:	DC - 18 GHz
Input Power (CW) 1 Watt @ 25 °C MIN.	
Impedance	50 Ohms (Open Circuit)
Operating Temp Range	-65 to +125 °C
<b>Mechanical:</b>	
Interface mates with all TNC and TNC-A female connectors	
Finish / Material:	
Body	Passivated Stainless Steel
Coupling Nut	Passivated Stainless Steel
Center Contact	None - Dust Cap/Open Circuit

Rev: 20070618

## Outline Drawing



**WHEN PERFORMANCE MATTERS**

150 Dow Street Manchester, NH 03101

Tel:603-222-2256

Fax:603-222-2259

www.XMACORP.com