

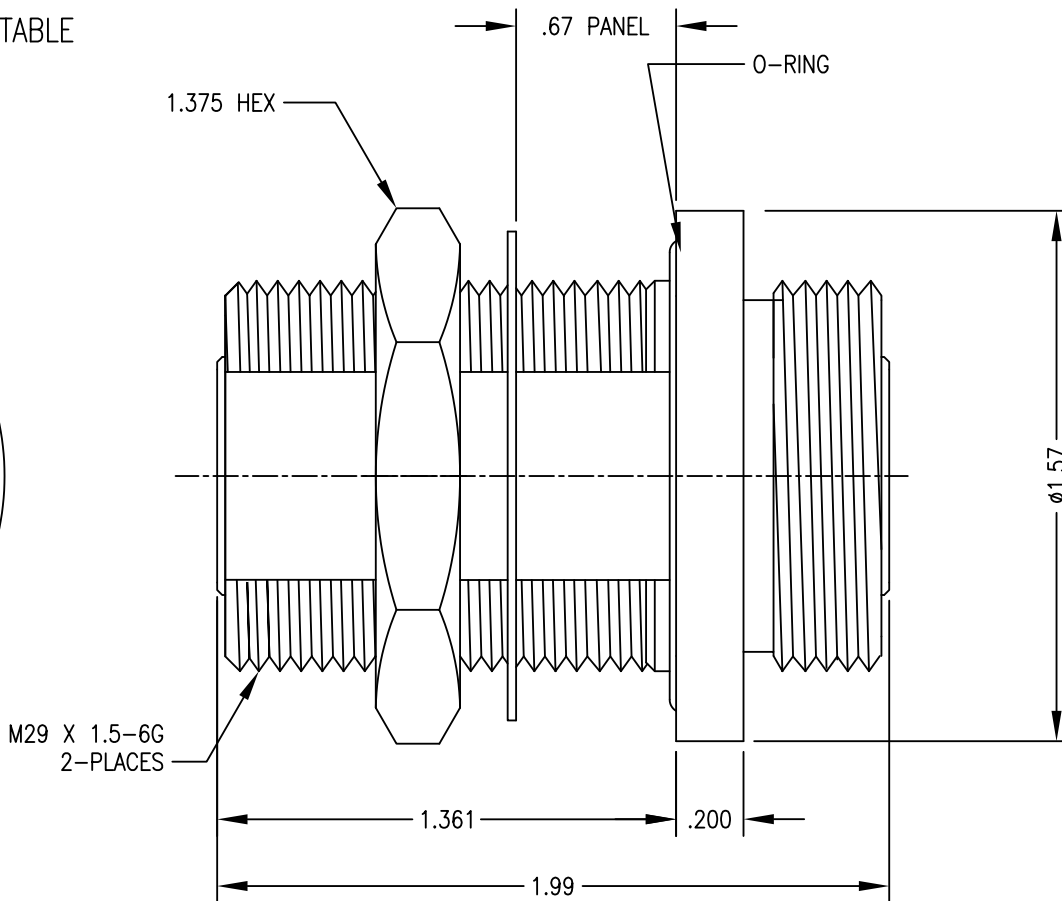
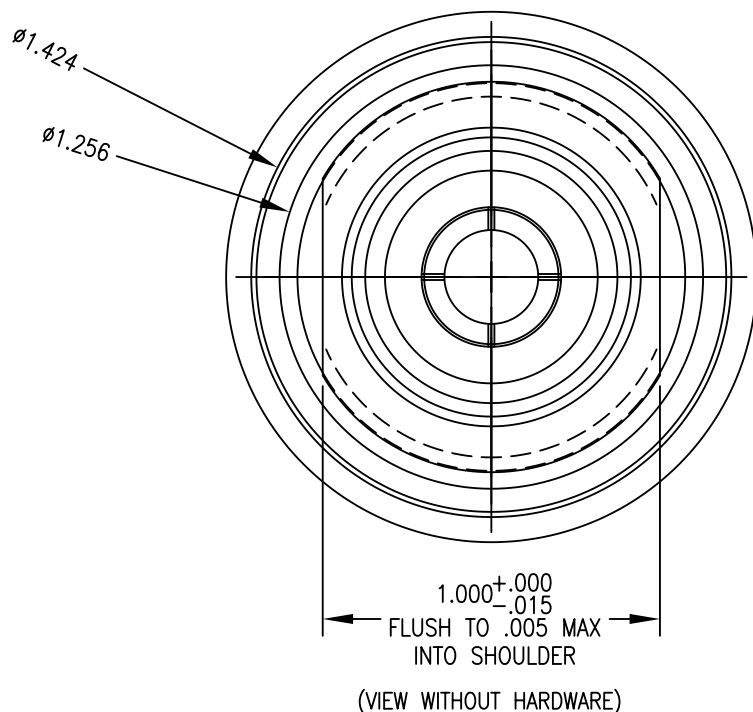
- 1.0 PERFORMANCE (sea level)  
 1.1 FREQ RANGE: DC-8 GHz  
 1.2 RL < (-38dB, 1GHz), (-25dB, 5GHz)  
 (-21dB, 8GHz) (E)  
 1.2 NOMINAL IMPEDANCE: 50 OHMS  
 1.3 DWV: 3500 Vrms, 60 Hz  
 1.4 TEMPERATURE RANGE: -40/+125°C  
 1.5 PIM< -165 dBc

- 2.0 MATERIALS: RoHS  
 2.1 CENTER CONTACT: BRONZE  
 2.2 DIELECTRIC: PTFE  
 2.3 BODY & NUT: BRASS  
 2.4 LOCKWASHER: BRONZE  
 2.5 GASKET: Si RUBBER  
 3.0 FINISHES: SEE TABLE

- 4.0 MECHANICAL  
 4.1 INTERFACE: IEC 169-4  
 Ø.232 ENHANCED  
 4.3 SOLID OUTER CONTACTS  
 4.4 DURABILITY: 500 CYCLES

DWG NO. OL 1910-13-1		REV. E
PART NUMBER 1910-13-US	BODY ALBALLOY	CONTACT SILVER

PLATING PER SAN-TRON SPEC. 7.3.1-8



Rev.	Revisions	Disp.	Date	Dwn.	Appd.
E	ADD RL PERFORMANCE TO NOTES	MIX	10/4/11	PRS	FSH
D	ADD PIM PERFORMANCE	USE	7/28/11	FSH	FSH
C	CENTER CONTACT MAT'L CHANGED TO PHOSPHOR BRONZE	NEW	4/23/08	JTH	FSH
B	FLANGE MOVED FROM 1.394 TO 1.361 FOR IMPERFECT THRDS.	NEW	3/26/08	JTH	FSH
A	RELEASE	NEW	3/5/08		

THIS DRAWING CONTAINS CONFIDENTIAL INFORMATION PROPRIETARY TO SAN-TRON, INC. IT MUST NOT BE REPRODUCED OR DISCLOSED TO OTHERS OR USED IN ANY OTHER WAY, IN WHOLE OR PART EXCEPT AS AUTHORIZED IN WRITING BY SAN-TRON, INC.

UNLESS OTHERWISE SPECIFIED:  
 ALL DIMENSIONS ARE IN INCHES.  
 ALL DIMENSIONS ARE AFTER PLATING.  
 .XXX= ±.005 ALL MACHINED SURFACES 32/ MAX.  
 .XX= ±.01 ANG.±1/2' FRACTIONAL= ±1/64

⓪ .004 MAX. TIR.      ⊥ AXIS .001

THIRD ANGLE PROJECTION

**SAN-TRON, INC.**  
 4 NEWBURYPORT TPK. IPSWICH MA USA 01938  
 TEL: 978 - 356 -1585 FAX: 978 - 356 -1573  
 WWW. santron.com E MAIL: santron@santron.com

**San-Tron**

TITLE  
7/16 F TO 7/16 F, BULKHEAD, STRAIGHT

MATERIAL:      FINISH: SEE TABLE

CAGE CODE: 50896      DWG NO. OL 1910-13-1      REV. E

SCALE X:X

DO NOT SCALE DRAWING