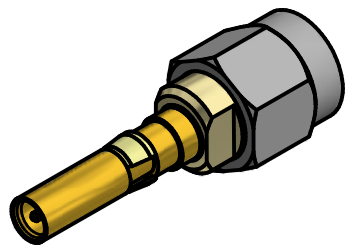


NOTES:

- 1) DESIGN AND INTERFACES PER IDS-56A AND 2.92mm.
- 2) RoHS COMPLIANT.
- 3) ELECTRICAL :
  - 3.1 FREQ. RANGE DC TO 40 GHz.
  - 3.2 VSWR - 1.25:1 MAX @ DC TO 26.5 GHz.
  - 1.35:1 MAX @ 26.5 GHz TO 40 GHz.



MATERIAL:				UNLESS OTHERWISE SPECIFIED, PALCO WORKMANSHIP STANDARDS APPLY. DIMENSIONS IN INCHES OR (METRIC)  DO NOT SCALE PRINTS  TOLERANCES ARE: FRACTIONS: ± 1/64 DECIMALS: .XX ± .01 .XXX ± .005 ANGLES: ± 1/2°		APPROVALS DRAWN J. Maturo 04/07/14 CHECKED JEM 06/25/14 QA MFG ENGINEER LRG 06/25/14 APPROVED JEM 06/25/14		<b>PALCO CONNECTOR</b> 22 GREAT HILL RD., NAUGATUCK, CT 06770  TITLE SIZE 12 PkZ RECEPTACLE TO 2.92mm PLUG ADAPTOR	
C	PER ECN 13027	7/5/2018	JEM	THE INFORMATION IN THIS DOCUMENT IS CONFIDENTIAL AND PROPRIETARY AND MAY NOT BE USED FOR ANY PURPOSE WITHOUT THE WRITTEN CONSENT OF PALCO.	SIZE	FSCM	DWG NO	REV	PLATING OPT.
B	PER ECN 12976	6/13/2018	JEM		A	58167	562_9-1000-00	C	G, P
A	REL. PER ECN 11918	6/25/2014	JEM		SCALE	F.S.R. #	SHEET	1	OF 1
01	PRELIMINARY	4/7/2014	JEM						
REV.	DESCRIPTION	DATE	APPR.						