

CATALOG #	"A" DETENT
00117-210-1-SB	SMOOTH BORE
00117-210-1-LD	LIMITED DETENT
00117-210-1-FD	FULL DETENT

REV.	DESCRIPTION	DATE	BY
E	SEE ECO GM-11534	4/12/00	MJC

MATERIAL AND FINISH

COUPLING NUT AND
ADAPTOR SHROUD:

CRES 303 PER ASTM A 484
AND ASTM A 582 OR ASTM A 555
AND ASTM A 581. PASSIVATE PER
MIL-F-14072 E300.

CONTACT, GPO HOUSING
AND PLUG HOUSING:

BERYLLIUM COPPER PER ASTM
B 196 AND/OR ASTM B 197.
GOLD PLATE PER MIL-G-45204;
TYPE I, GRADE C, CLASS 1.
OVER NICKEL PER QQ-N-290A;
CLASS 1; 50 MICRONS MIN.

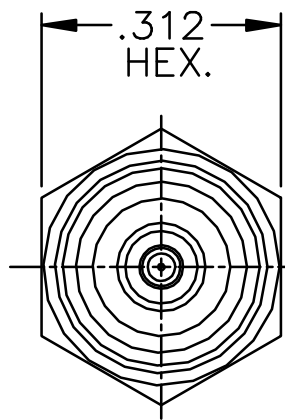
DIELECTRICS:

VIRGIN PTFE FLUOROCARBON PER
ASTM D 1710 AND ASTM D 1457.

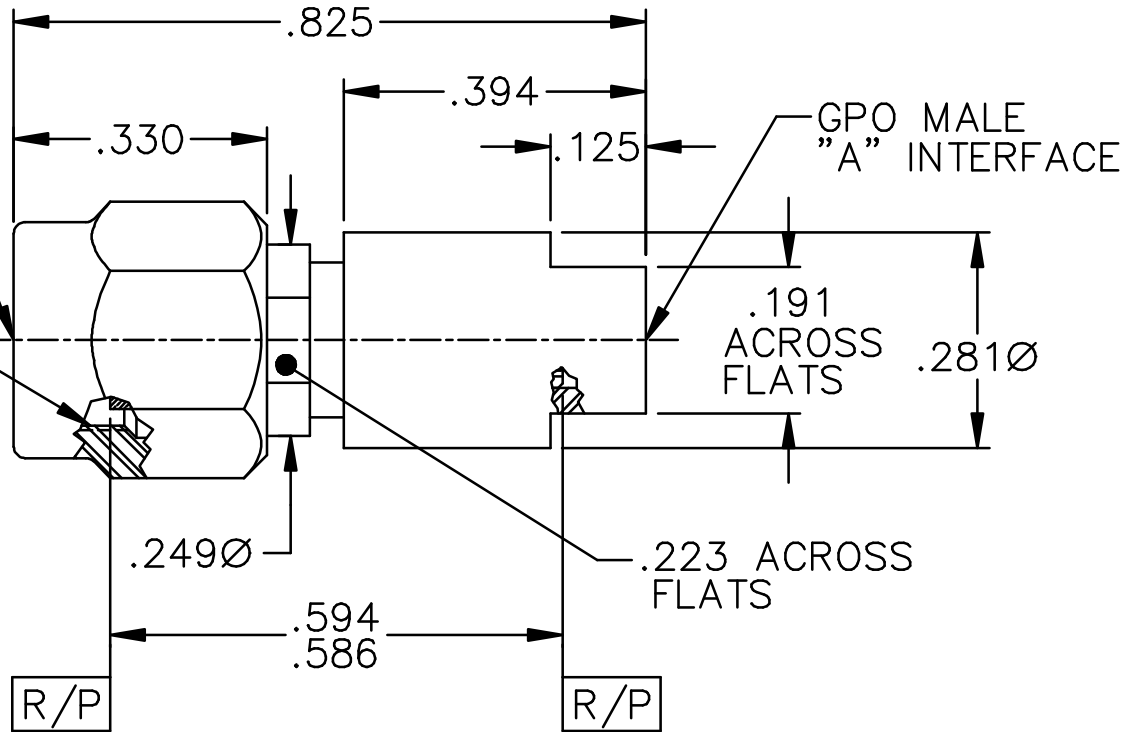
RETAINING RING:

BERYLLIUM COPPER PER ASTM
B 196 AND/OR ASTM B 197.

TYPE K PLUG
INTERFACE



1/4-36 UNS-2B



This drawing and any data contained therein is the property of Gilbert Engineering Co. Inc., and constitutes and contains proprietary and confidential information. Neither receipt nor possession of this drawing confers or transfers any right to duplicate, use or disclose any information contained herein except as expressly authorized by Gilbert Engineering Co. Inc.

ALL DIMENSIONS IN INCHES		CATALOG NUMBER	CODE IDENT NO.
		00117-210-1-TAB	82316
DRAWN:	GILBERT ENGINEERING CO., INC.		
HCP	TITLE		
DATE	OUTLINE DRAWING FOR GPO MALE TO TYPE K PLUG ADAPTOR (TAB DETENT)		
ASSEMBLY PROCEDURES: NONE	11-6-96	DWG. NO.	OL-00117-210-1-TAB
SOURCE FILE: MECR #613	SHT. 1 OF 1		REV E