

THIS DRAWING CONTAINS INFORMATION PROPRIETARY TO RF INDUSTRIES,  
 ANY UNAUTHORIZED USE OF THIS DRAWING IS EXPRESSLY PROHIBITED  
 WITHOUT WRITTEN PERMISSION FROM RF INDUSTRIES.  
 ANY VIOLATION IS PUNISHABLE UNDER U.S. COPYRIGHT LAWS.

PART NO.

**RF35F-35F-00000**

REV	DESCRIPTION	DWN	DATE	APPROVED
-	ENGINEERING RELEASE	JDM	5/26/00	JDMc

**SPECIFICATIONS:**

**IMPEDANCE RANGE:** 50 Ohms  
**FREQUENCY RANGE:** DC to 34 GHz  
**VSWR:** 1.04 + .006 f (f=GHz) Max. DC-34 GHz  
**CONTACT RESISTANCE:**  
 Outer Contact= 2.0 milliohms  
 Center Contact= 3.0 milliohms  
**CONNECTOR DURABILITY:** 500 Cycles minimum  
**TEMPERATURE RANGE:** -55° C TO 105° C

**MATERIALS:**

Body and Body Components:  
 Non-Magnetic stainless steel, per ASTM  
 A582, class 303 condition A.

Contacts: Beryllium copper,  
 per QQ-C-530, heat treated per  
 MIL-H-7199

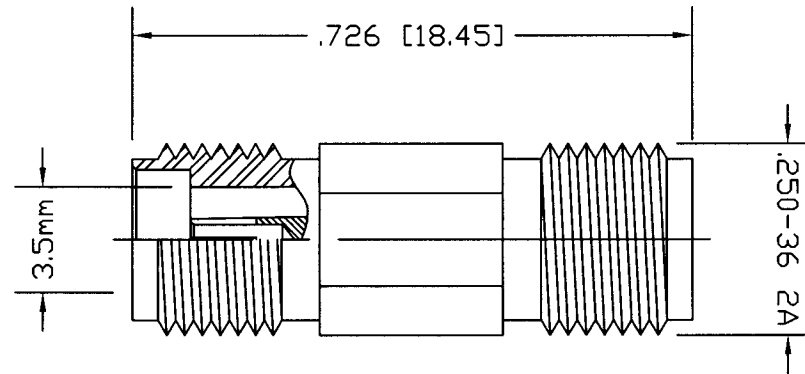
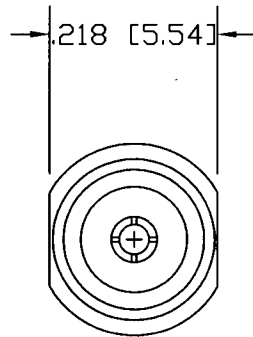
Insulators: PTFE  
 MIL-P-19468, ASTM-D1710

**FINISH:**

Center Contacts:  
 .000050 min. gold per MIL-G-45204B  
 Type II, Grade C, Class 1  
 over .000050 min. Nickel per  
 QQ-N-290A

Other Metal Parts:

Passivated, (as specified)  
 to meet the finish and  
 corrosion requirements of MIL-C-39012.



UNLESS OTHERWISE SPECIFIED:

1. REMOVE ALL BURRS
2. BREAK ALL CORNERS & EDGES .005 R. MAX.
3. CHAMFER 1ST & LAST THREADS 45°
4. SURFACE ROUGHNESS 63 FINISH MIL-STD-10
5. DIAMETERS ON COMMON CENTERS TO BE CONCENTRIC WITHIN .002 T.I.R.
6. ALL DIMENSIONS ARE AFTER PLATING.

DIMENSIONS ARE IN INCHES  
 AND [MILLIMETERS]

UNLESS OTHERWISE NOTED  
 TOLERANCES ARE:

DECIMALS	DIAMETER
.xxx±.003 [.08]	.xxx±.001 [.03]
.xx±.005 [.13]	.xx±.003 [.08]



7610 MIRAMAR RD  
 SAN DIEGO, CA 92126  
 (619)549-6340  
 (619)549-6345 FAX

**3.5mm, JACK TO JACK**

ADAPTER

SIZE	CABLE GROUP	DWG NO.	REV
A		35F35F00000	-
SCALE: NTS		CAD FILE ASSEMBLY	SHEET 1 OF 1

#	PART NO.	QTY	DESCRIPTION	MATRL	PLATE	APPROVALS	DATE
1	001-35F-001-SP	1	BODY	SST.	PASS	00000000	
2	008-35F-001-CG	1	CONTACT	BE.CU.	AU/NI		
3	008-35F-002-CG	1	CONTACT	BE.CU.	AU/NI		
4	025-35X-000-RX	1	BEAD	REX	---		
5	032-35F-000-SP	1	INSERT	SST.	PASS		
6							
7							
8							

DRAWN  
 D. McREYNOLDS 6/29/00  
 CHECKED  
 JDM 5/26/00  
 ORJ DRAWN  
 JDMc 5/26/00