

This drawing and any data contained therein is the property of Gilbert Engineering Co., Inc., and constitutes and contains proprietary and confidential information. Neither receipt nor possession of this drawing confers or transfers any right to duplicate, use, or disclose any information contained herein except as expressly authorized by Gilbert Engineering Co. Inc.

REV.	DESCRIPTION	DATE	APP'D.
01	PRE-RELEASE	12/13/96	

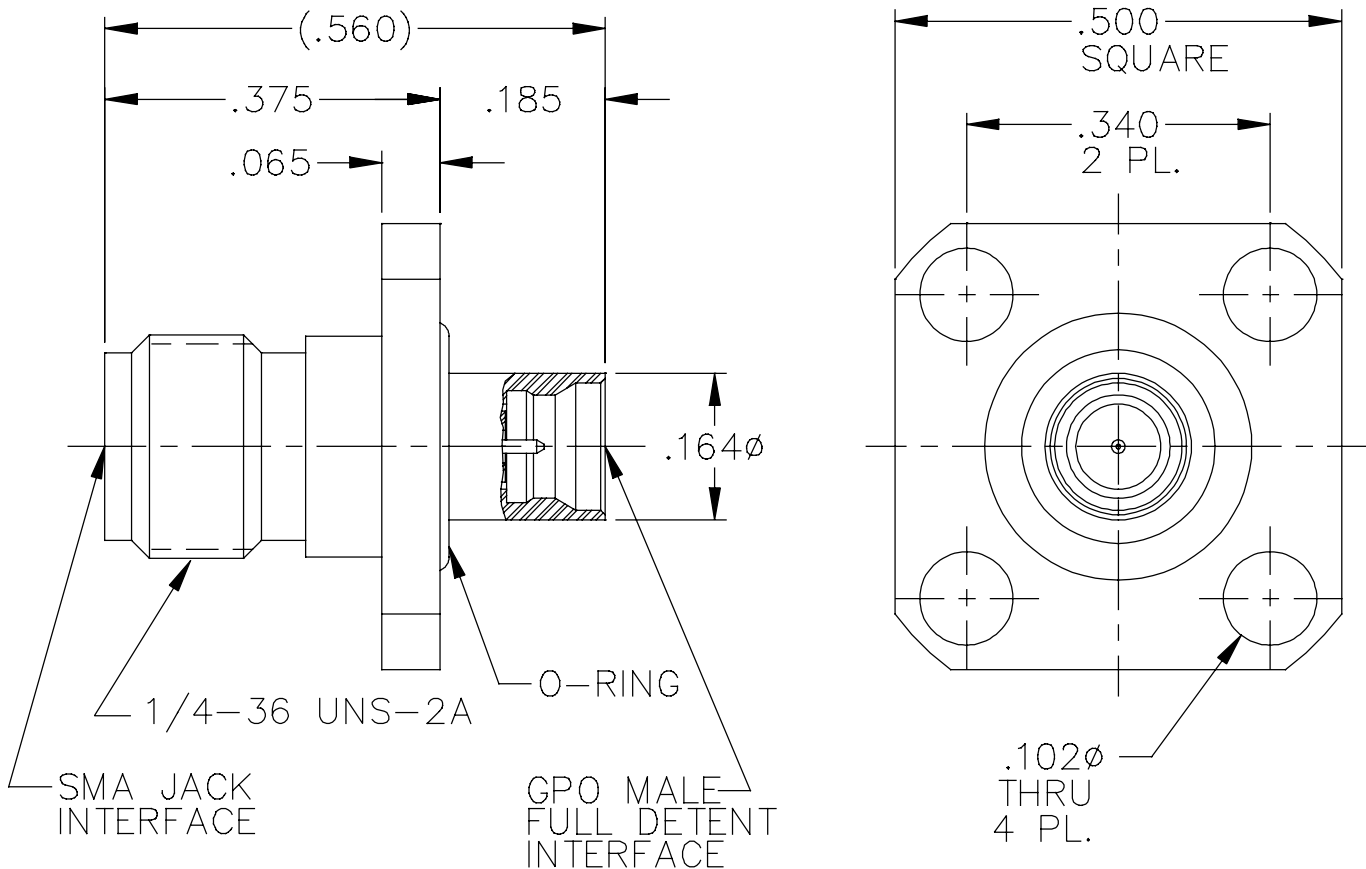
### MATERIAL AND FINISH

SHROUD: CRES 303 PER ASTM A 484 AND ASTM A 582 OR ASTM A 555 AND ASTM A 581. PASSIVATE PER MIL-F-14072 E 300.

PIN CONTACT: BERYLLIUM COPPER PER ASTM B196 AND/OR ASTM B197. GOLD PLATE PER MIL-G-45204; TYPE I, GRADE C, CLASS 1.

DIELECTRICS: VIRGIN PTFE FLUOROCARBON PER ASTM D 1710 AND ASTM D 1457.

O-RING: VITON (FLUOROCARBON), PER MIL-R-83248/1



ALL DIMENSIONS ARE IN INCHES		CAT. NO. 00219-142-3	CODE IDENT NO. 82316
GILBERT ENGINEERING CO., INC.			
BY		DATE	
DRAWN: JRM		12/13/96	
ASSEMBLY PROCEDURES: NONE		TITLE OUTLINE DRAWING FOR GPO MALE FULL DETENT TO SMA JACK 4 HOLE FLANGE MOUNT ADAPTOR	
SOURCE FILE: SK-1188	SHT. 1 OF 1		