

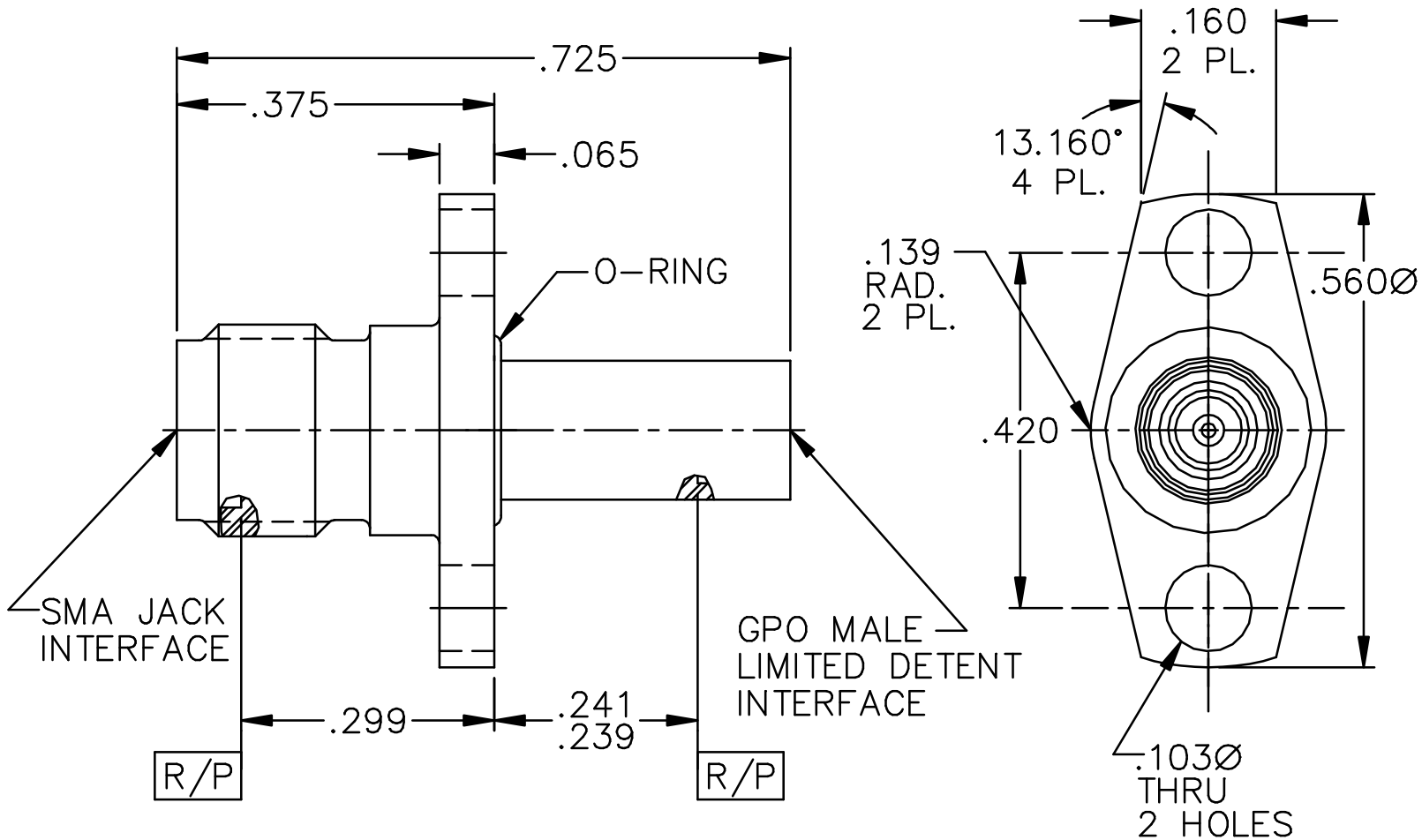
MATERIAL AND FINISH

HOUSING: CRES 303 PER ASTM A 484 AND ASTM A 582 OR ASTM A 555 AND ASTM A 581. PASSIVATE PER MIL-F-14072 E300.

CENTER CONTACT: BERYLLIUM COPPER PER ASTM B 196 AND/OR ASTM B 197. GOLD PLATE PER MIL-G-45204; TYPE I, GRADE C, CLASS 1. OVER NICKEL PER QQ-N-290A; CLASS 1; 50 MICRONS MIN.

DIELECTRICS: VIRGIN PTFE FLUOROCARBON PER ASTM D 1710 AND ASTM D 1457.

O-RING: SILICONE RUBBER PER ZZ-R-765.



This drawing and any data contained therein is the property of Gilbert Engineering Co., Inc., and constitutes and contains proprietary and confidential information. Neither receipt nor possession of this drawing confers or transfers any right to duplicate, use or disclose any information contained herein except as expressly authorized by Gilbert Engineering Co. Inc.		CAT. NO. 00219-128-3	CODE IDENT NO. 82316
		GILBERT ENGINEERING CO., INC.	
DRAWN: C LONG	DATE: 2/3/94	TITLE: OUTLINE DRAWING FOR SMA JACK 2 HOLE FLANGE MOUNT TO GPO MALE ADAPTOR	
ASSEMBLY PROCEDURES: NONE			
SOURCE FILE: MECR #963	SHT. 1 OF 1	DWG. NO. SS-7125-7	REV F