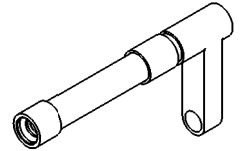
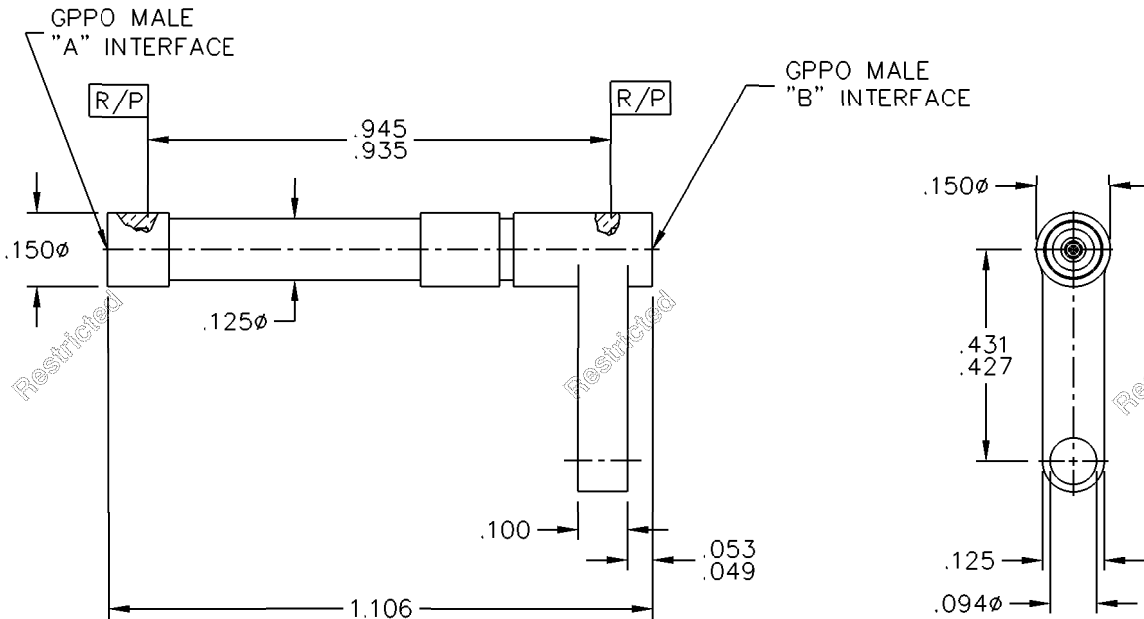


CATALOG NUMBER	"A" INTERFACE	"B" INTERFACE
B3B3-0503-02	FULL DETENT	FULL DETENT
B3B5-0503-02	FULL DETENT	SMOOTH BORE
B5B3-0503-02	SMOOTH BORE	FULL DETENT
B5B5-0503-02	SMOOTH BORE	SMOOTH BORE



MATERIAL AND FINISH

CENTER CONTACTS AND HOUSINGS: BeCu; GOLD PLATE 75 MICRINCHES TYPICAL  
 OVER NICKEL PLATE 100 MICRINCHES TYPICAL  
 DIELECTRICS: VIRGIN PTFE



~~CAUTION: THIS TECHNOLOGY UNDER U.S. EXPORT CONTROL~~

TEF 4/21/15

This drawing and any data contained herein is the property of Corning Gilbert Inc., and constitutes and contains proprietary and confidential information. Neither receipt nor possession of this drawing confers or transfers any right to duplicate, use or disclose any information contained herein except as expressly authorized by Corning Gilbert Inc.

GPPO MALE (TAB DETENT) TO  
 GPPO MALE (TAB DETENT) CONNECTOR  
 SAVER WITH MOUNTING BRACKET

IDENT CODE:  
 82316  
 REVISION: 01

Corning Gilbert Inc.

SOURCE FILE: SK-5072	DWG. NO.: OL-BXB-0503-02	ASSY. PROC.: -
----------------------	--------------------------	----------------