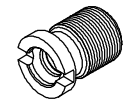


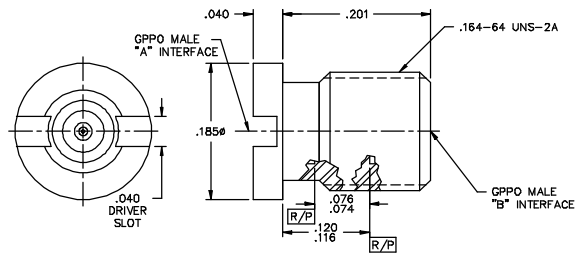
DATE REVISION: 8/10/91

CATALOG NUMBER	"A" INTERFACE	"B" INTERFACE
B383-0523-02	FULL DETENT	FULL DETENT
B385-0523-02	FULL DETENT	SMOOTH BORE
B543-0523-02	SMOOTH BORE	FULL DETENT
B585-0523-02	SMOOTH BORE	SMOOTH BORE

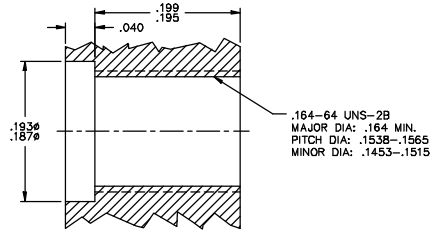


**MATERIAL AND FINISH**

HOUSING: CRES 303; PASSIVATED  
 PIN CONTACT: BeCu; GOLD PLATE 50-100 ? INCHES  
 OVER NICKEL PLATE 50 ? INCHES MIN.  
 DIELECTRIC: VIRGIN PTFE (TEFLON)



**RECOMMENDED MOUNTING HOLE**



GPPO MALE TO GPPO MALE THREAD-IN ADAPTOR (TAB-DETENT)		IDENT CODE: 82316	<b>GILBERT ENGINEERING</b>
		REVISION: A	
SOURCE FILE: MECR# 1811	DWG. NO.: OL-BXB-0523-02	ASSY. PROC: -	