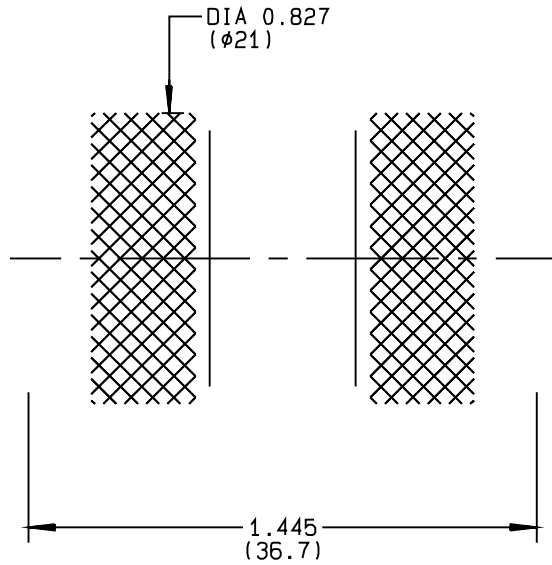


TECHNICAL DATA
MALE-MALE ADAPTOR

000



NOMINAL IMPEDANCE	Ω	CABLES :	
FREQUENCY RANGE	GHz		
TEMPERATURE RATING	$^{\circ}\text{C}$		
V.S.W.R	+ x F(GHz)Maxi		
RF INSERTION LOSS	\sqrt{F} (GHz) dB Maxi		
VOLTAGE RATING	Veff Maxi		
DIELECTRIC WITHSTANDING VOLTAGE	Veff Mini		
INSULATION RESISTANCE	M Ω Mini	OTHERS CHARACTERISTICS	
HERMETIC SEAL	Atm.cm ³ /s	CABLE RETENTION	N Mini
LEAKAGE (pressurized only)		CENTER CONTACT RETENTION	
MECHANICAL DURABILITY	Cycles	Axial force - mating end	N Mini
WEIGHT	gr	Axial force - opposite end	N Mini
SPECIFICATION		Torque	cm.N Mini
		RECOMMENDED TORQUES	
		Mating	cm.N
		Panel nut	cm.N
		Clamp nut	cm.N

CONNECTOR PARTS	MATERIALS	FINISH	(all values are given) in micrometers
BODY			
OUTER CONTACT			
CENTER C			

BONOMINI

ISSUE

CREATION DATE

FILE PART-NUMBER



The information given here is subject to change without notice.
Design changes may be in order to improve the product .

Connect to the future