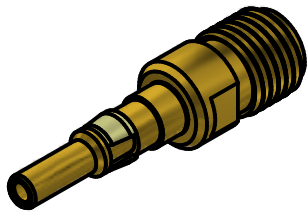


NOTES:

- 1) DESIGN AND INTERFACES PER IDS-56A AND 2.92mm.
- 2) RoHS COMPLIANT.
- 3) ELECTRICAL :
 - 3.1 FREQ. RANGE DC TO 40 GHz.
 - 3.2 VSWR - 1.25:1 MAX @ DC TO 26.5 GHz.
 - 1.35:1 MAX @ 26.5 GHz TO 40 GHz.



MATERIAL:				UNLESS OTHERWISE SPECIFIED, PALCO WORKMANSHIP STANDARDS APPLY. DIMENSIONS IN INCHES OR (METRIC) DO NOT SCALE PRINTS TOLERANCES ARE: FRACTIONS: ± 1/64 DECIMALS: .XX ± .01 .XXX ± .005 ANGLES: ± 1/2°	APPROVALS DATE		PALCO CONNECTOR 22 GREAT HILL RD., NAUGATUCK, CT 06770									
DRAWN J. Maturo		04/07/14			CHECKED JEM		06/25/14		TITLE SIZE 12 PkZ PLUG TO 2.92mm RECEPTACLE ADAPTOR							
QA				MFG				ENGINEER LRG		04/07/14		SIZE A	FSCM 58167	DWG NO 562_9-0100-00	REV B	PLATING OPT. G, P
APPROVED JEM		06/25/14		SCALE		F.S.R. #		SHEET 1 OF 1		REV. PLATING OPT.		B G, P				
B	PER ECN 13027	7/26/2018	JEM													
A	REL. PER ECN 11917	6/25/2014	JEM													
01	PRELIMINARY	4/7/2014	JEM													
REV.	DESCRIPTION	DATE	APPR.													