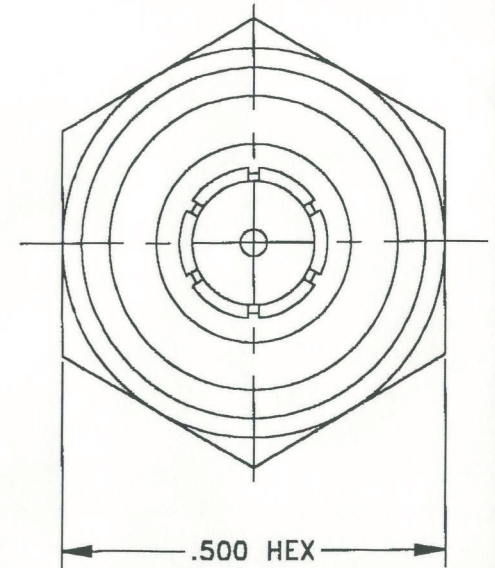
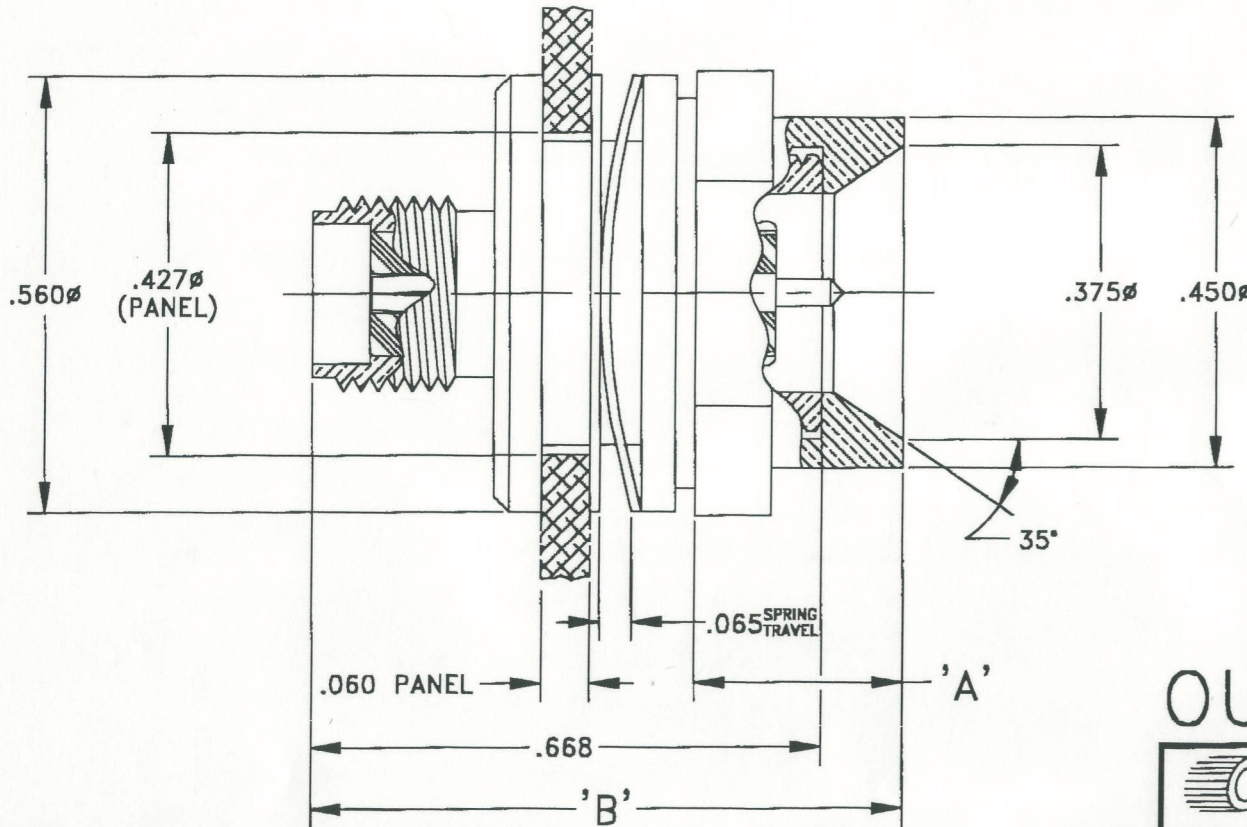


THIS DOCUMENT CONTAINS PROPRIETARY INFORMATION & MAY NOT BE REPRODUCED OR DISCLOSED TO OTHERS WITHOUT WRITTEN CONSENT FROM CONNECTRONICS, INC.

DASH #	BODY MATERIAL	BODY FINISH	CONTACT FINISH	'A'	'B'
-1	STAINLESS	PASSIVATED	GOLD	.270	.79 REF
-2	STAINLESS	PASSIVATED	GOLD	.305	.82 REF
-3	BRASS	NICKEL	GOLD	.270	.79 REF

NOTES:

- A) ELECTRICAL SPECS;
 - IMPEDANCE / 50 OHMS.
 - VOLTAGE RATING/500 VRMS.
 - INSULATION RESISTANCE / 5,000 MEGOHMS MIN.
 - DIELECTRIC WITHSTANDING VOLTAGE / 1,500 VRMS.
 - FREQUENCY RANGE 0 TO 18 Ghz.
- B) TEMPERATURE RANGE / -65° TO +165° C.
- C) DURABILITY / 500 MATING CYCLES MIN.



OUTLINE DRAWING

CONNECTRONICS, INC.
EDINBURGH, INDIANA

FSCM 43608

TOLERANCES
UNLESS OTHERWISE SPECIFIED

DWG BY: RLC DATE: 8/23/01

APVD BY: SCALE: _____

MATERIAL: _____

FINISH: _____

DESCRIPTION: SMA
ADAPTOR, JACK TO QUICK
DISCONNECT PLUG

2 PL DEC ±.020

3 PL DEC ±.005

ANG. DIM ±1/2°

DRAWING NO.
42-623
SHT 1 OF 1

REVISIONS
-A-
ECM2950
ADDED NOTES.
JB 2/25/02

THIS DOCUMENT CONTAINS PROPRIETARY INFORMATION & MAY NOT BE REPRODUCED OR DISCLOSED TO OTHERS WITHOUT WRITTEN CONSENT FROM CONNECTRONICS, INC.