

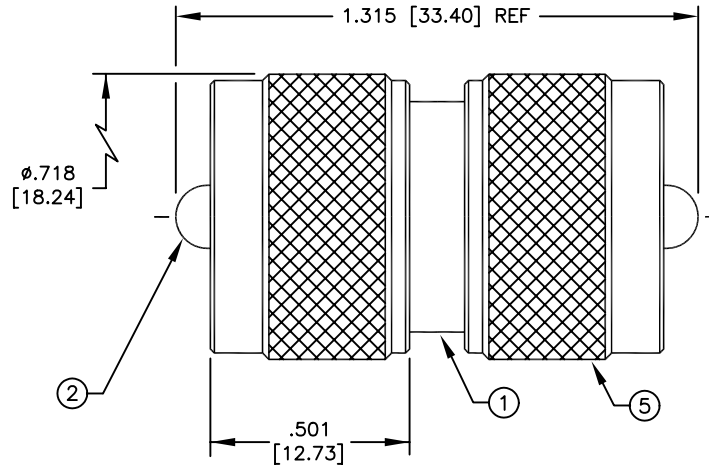
SPECIFICATION CONTROL DRAWING

THIS DRAWING CONTAINS INFORMATION PROPRIETARY TO RF INDUSTRIES, LTD. ANY UNAUTHORIZED USE OF THIS DRAWING IS EXPRESSLY PROHIBITED. ANY VIOLATION IS PUNISHABLE UNDER U.S. COPYRIGHT LAWS.

REV	DESCRIPTION	DWN	DATE	APPROVED
B	THREAD CHANGE	CJ	4/06/92	J. BENZ
C	STANDARDIZE \ RPLS DWG 7482	DM	11/04/92	J. BENZ
D	UPDATE TO SHOW INDIVIDUAL PART SECTIONS	BMA	2/04/97	R. RICE
E	DIELECTRIC NOW TEFLON	CZS	10/20/98	R. RICE

ALL DIMENSIONS ARE REFERENCE ONLY

000000



SPECIFICATIONS:

IMPEDANCE: NON CONSTANT
 WORKING VOLTAGE: 500 VRMS @ SEA LEVEL
 FREQUENCY RANGE: 0-300 MHz

DIMENSIONS ARE IN INCHES AND [MILLIMETERS]

UNLESS OTHERWISE NOTED TOLERANCES ARE:
 DECIMALS DIAMETER

*RF*connectors

DIVISION OF RF INDUSTRIES, LTD.

7610 MIRAMAR RD
 SAN DIEGO, CA 92126
 (619)549-6340
 (619)549-6345 FAX

RFU-538/DM

DOUBLE UHF MALE ADAPTER

ITEM	DESCRIPTION	QTY	MATERIAL	FINISH
5	SHELL	2	BRASS	NICKEL
4	RETAINING RING	2	BRASS	NICKEL
3	DIELECTRIC	2	TEFLON	NONE
2	PIN	1	BRASS	SILVER
1	BODY	1	BRASS	NICKEL

DRAWN C. ZUNIGA	10/20/98
CHECKED	
ORJ DRAWN D. MORRIS	11/4/92
APPROVALS	DATE

SIZE A	CABLE GROUP N/A	DWG NO. 7810	REV E
SCALE: 2:1		CAD FILE 13ARC B	SHEET 1 OF 1