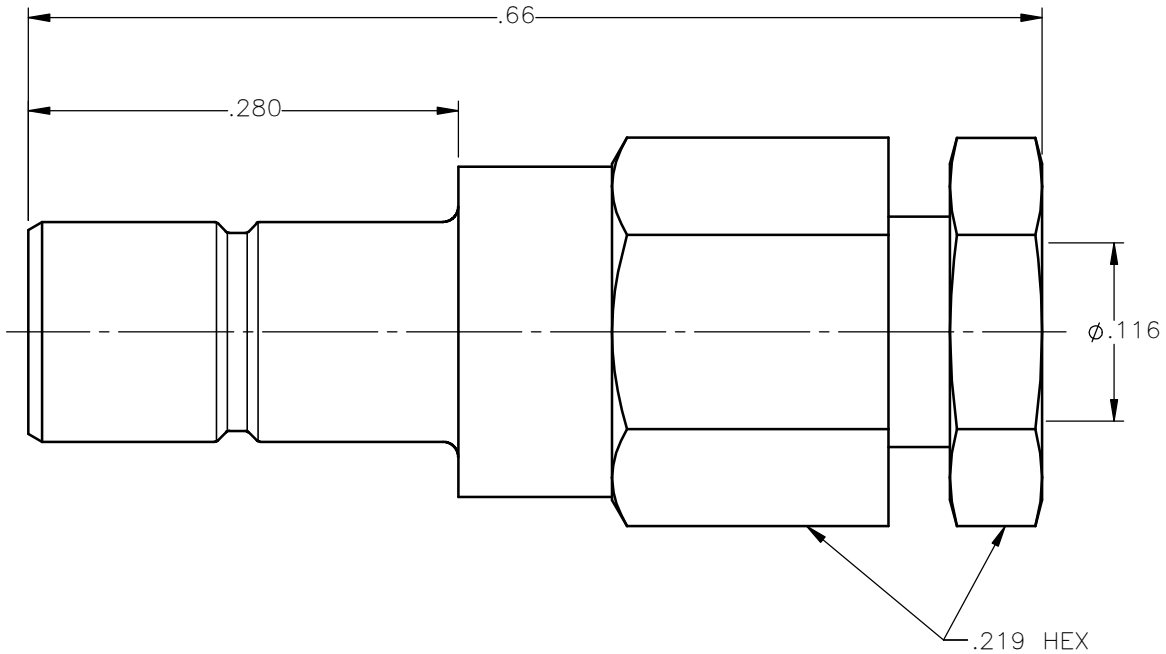


REVISIONS			
REV.	DESCRIPTION	DATE	APPROVED
A	INITIAL RELEASE	11/11/11	D.N.





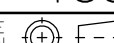
NOTES: CONFORMS TO MIL-PRF-39012/68-0004

**MATERIALS:**

1. INSULATORS = VIRGIN WHITE TEFLON PER ASTM D1710, GRADE 1, TYPE I, CLASS "B".
2. ALL OTHER METAL PARTS = BRASS PER ASTM B16, ALLOY C36000, TEMPER H02.

**FINISHES:**

1. BODY = GOLD PLATE PER MIL-G-45204, TYPE II, CLASS 1, GRADE C, OVER .0001 TO .0002 COPPER STRIKE PER MIL-C-14550.
2. CONTACT = GOLD PLATE PER MIL-G-45204, TYPE II, CLASS 1, GRADE C, OVER .00010 TO .00020 STRESS FREE SULFAMATE NICKEL PER QQ-N-290.
3. ALL OTHER METAL PARTS = GOLD PLATE PER MIL-G-45204, TYPE II, CLASS 0, GRADE C, OVER .00010 TO .00020 COPPER STRIKE PER MIL-C-14550.

UNLESS OTHERWISE SPECIFIED DIMENSIONS ARE IN INCHES TOLERANCES ON	DWN: DATE	 <b>Property of Radiall</b> This document cannot be reproduced or communicated to a third party without prior written permission of RADIALL. 
	D.N. 11/11/11	
DECIMAL	CHKD: DATE	<b>SMB STRAIGHT MALE JACK CLAMP TYPE FOR RG-316 &amp; SIMILAR CABLES</b>
ANGLE	M.J. 11/11/11	
.XX = +/- .010 .XXX = +/- .005 .XXXX = +/- .0005	APVD: DATE	
	J.M. 11/11/11	SIZE: A    FSCM NO.: 19505    DWG NO.: 2001-1551-903    REV: A
REFERENCE:	MATERIALS & FINISHES:	SCALE: 8:1    THIRD ANGLE PROJECTION
ORIGINATED: D.N. DATE: 11/11/11	SEE NOTES	 SHEET 1 OF 1

2001-1551-903