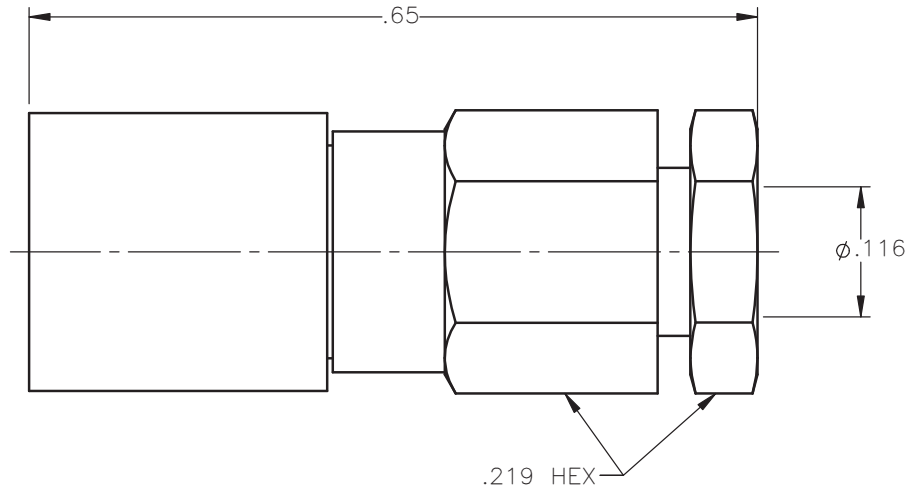


REVISIONS			
REV.	DESCRIPTION	DATE	APPROVED
A	INITIAL RELEASE	07/19/13	D.N.





NOTES: CONFORMS TO MIL-PRF-39012/67-0104

MATERIALS:

1. CONTACT & SPRING = BERYLLIUM COPPER PER ASTM B196, ALLOY C17300, TEMPER TD04.
2. INSULATORS = VIRGIN WHITE TEFLON PER ASTM D1710, GRADE 1, TYPE I, CLASS "B".
3. ALL OTHER METAL PARTS = BRASS PER ASTM B16, ALLOY C36000, TEMPER H02.

FINISHES:

1. CONTACT = GOLD PLATE PER MIL-G-45204, TYPE II, CLASS 1, GRADE C, OVER .00010 TO .00020 STRESS FREE SULFAMATE NICKEL PER QQ-N-290.
2. ALL OTHER METAL PARTS = SILVER PLATE PER QQ-S-365, TYPE III, GRADE A, .0002 TO .0003 THICK OVER COPPER FLASH PER MIL-C-14550, .000010 TO .000030 THICK, TREAT WITH TARNABAN.

UNLESS OTHERWISE SPECIFIED DIMENSIONS ARE IN INCHES TOLERANCES ON		DWN: D.N.	DATE: 07/19/13	 <b>Property of Radiall</b> This document cannot be reproduced or communicated to a third party without prior written permission of RADIALL.	
DECIMAL	ANGLE	CHKD: J.S.	DATE: 07/19/13		
		APVD: J.M.	DATE: 07/19/13		
REFERENCE:		MATERIALS & FINISHES: SEE NOTES		SMB STRAIGHT FEMALE PLUG CLAMP TYPE FOR RG-316 & SIMILAR CABLES	
ORIGINATED: D.N. DATE: 07/19/13		SIZE: A	FSCM NO.: 19505	DWG NO.: 2002-6551-903	REV: A
		SCALE: 6:1	THIRD ANGLE PROJECTION		SHEET 1 OF 1

2002-6551-903