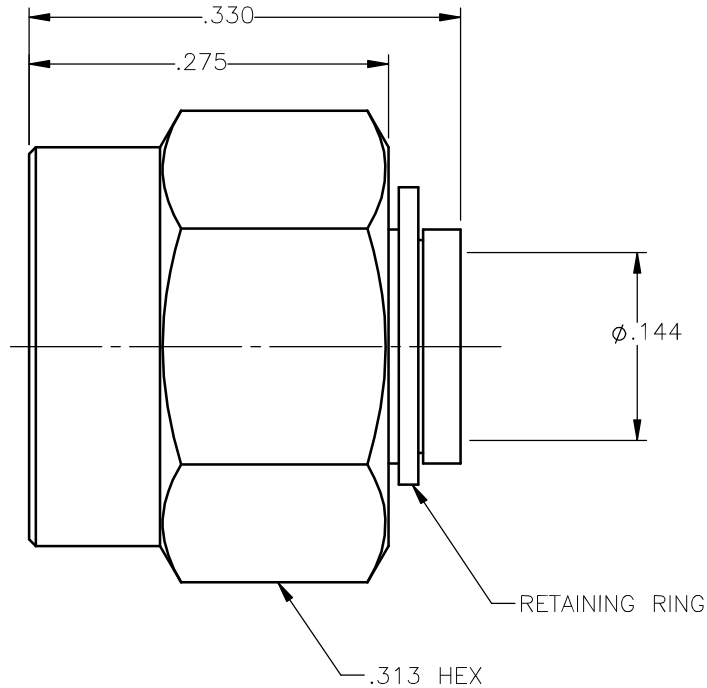


REVISIONS			
REV.	DESCRIPTION	DATE	APPROVED
A	ADDED QPL NOTE	07/31/13	J.S.





NOTES: CONFORMS TO MIL-PRF-39012/92B3101.

MATERIALS:

1. BODY & COUPLING NUT = STAINLESS STEEL PER ASTM A582, ALLOY 303, CONDITION "A".
2. RETAINING RING = BERYLLIUM COPPER PER ASTM B196, ALLOY C17300, TEMPER TD04.
3. GASKET = SILICONE RUBBER PER ZZ-R-765, CLASS 2B, GRADE 65-75.

FINISHES:

1. BODY = GOLD PLATE PER MIL-G-45204, TYPE II, CLASS 1, GRADE C, OVER .00010 TO .00020 STRESS FREE SULFAMATE NICKEL PER QQ-N-290.
2. COUPLING NUT = PASSIVATE PER QQ-P-35, TYPE VI.
3. RETAINING RING = NICKEL PLATE PER QQ-N-290, CLASS 1, GRADE G, EXCEPT .0001 TO .0002 THICK OVER .00005 TO .0001 THICK COPPER PER MIL-C-14550.

UNLESS OTHERWISE SPECIFIED DIMENSIONS ARE IN INCHES TOLERANCES ON		DWN: A.D.M.	DATE: 06/03/05	 Property of Radiall This document cannot be reproduced or communicated to a third party without prior written permission of RADIALL.	
DECIMAL	ANGLE	CHKD: D.N.	DATE: 06/03/05		
		APVD: D.J.C.	DATE: 06/03/05		
REFERENCE: ORIGINATED: A.D.M. DATE: 06/03/05		MATERIALS & FINISHES: SEE NOTES		SMA STRAIGHT PLUG DIRECT SOLDER TYPE FOR .141 S/R & SIMILAR CABLES	
		SIZE: A	FSCM NO.: 19505	DWG NO.: 9301-1003-909	REV: A
		SCALE: 7:1		THIRD ANGLE PROJECTION	SHEET 1 OF 1

9301-1003-909