

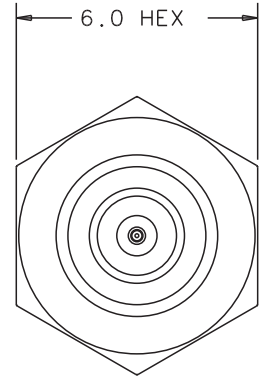
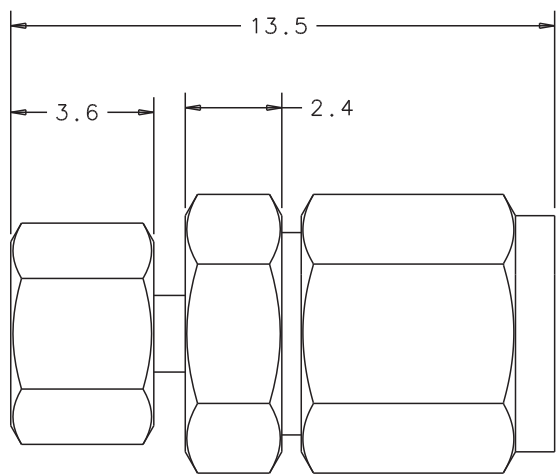
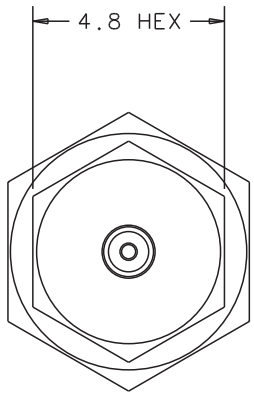
1

2

3

4

ZONE	REV	DESCRIPTION OF REVISION	ECN NO.	BY	DATE	APPROVED
	A	INITIAL ISSUE	N/A	AT	10/27/04	AT



NOTES:

- 1. ELECTRICAL
 - 1.1. FREQUENCY RANGE: DC TO 110 GHZ
 - 1.2. IMPEDANCE: 50 OHMS
 - 1.3. VSWR: 1.24 TYPICAL
- 2. MECHANICAL
 - 2.1. FRONTSIDE PIN DEPTH: 0 TO 0.076 MM MAXIMUM
 - 2.2. COUPLING NUT TIGHTENING TORQUE: 4 IN-LB MAXIMUM
- 3. MATERIALS
 - 3.1. OUTER CONDUCTOR: PASSIVATED STAINLESS STEEL
 - 3.2. CENTER CONDUCTOR: BERYLLIUM-COPPER, GOLD PLATED OVER NICKEL PER MIL-G-45204C
 - 3.3. COUPLING NUT: PASSIVATED STAINLESS STEEL
 - 3.4. SLEEVE: BERYLLIUM-COPPER, GOLD PLATED OVER NICKEL PER MIL-G-45204C
 - 3.5. LOCK SCREW: PASSIVATED STAINLESS STEEL

DIMENSIONS ARE FOR REFERENCE ONLY

UNLESS OTHERWISE SPECIFIED, ALL DIMENSIONS ARE IN MILLIMETERS (mm)		DRAWN A. THOMAS	DATE 10/04	MATERIAL:	
SEE PRODUCT STRUCTURE		CHECKED A. SHARMA	DATE 10/04	Anritsu 490 JARVIS DRIVE MORGAN HILL, CA. 95037	
ALL INFORMATION SHOWN ON THIS SPECIFICATION IS PROPRIETARY INFORMATION OF ANRITSU COMPANY		APPROVED A. THOMAS	DATE 10/04		
DO NOT SCALE DRAWING		TOLERANCES: UNLESS OTHERWISE SPECIFIED		TITLE	
		0 PLACES ANGLES ±.5°		W1-101M OUTLINE	
		1 PLACES SURFACE FINISH N7		FSDM NO. 20944	DRAWING NO. 63771
		2 PLACES FINISH		SCALE 1/X	UNDER ECN CONTROL 10/04 BY PL M.E DATE
				REV A	SHEET 1 OF 1