

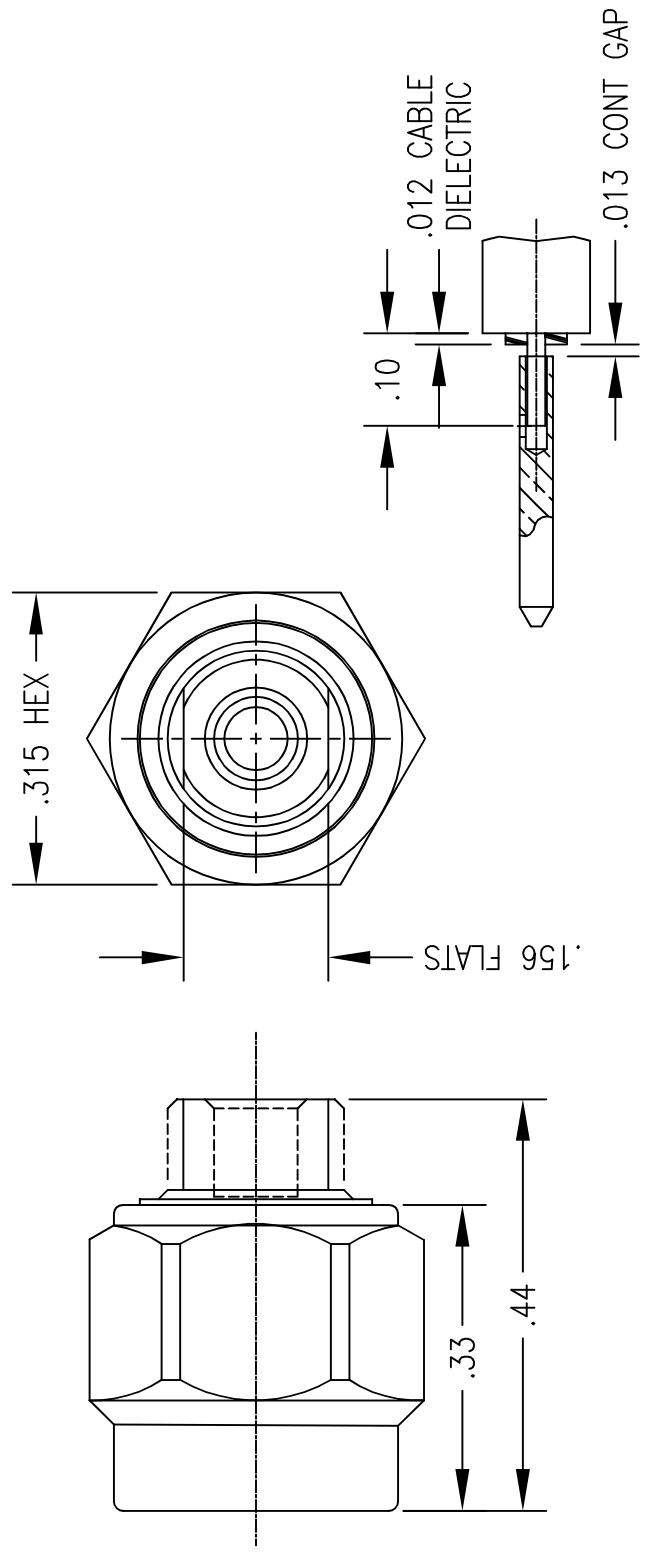
DWG NO.		REV.	
OL-2901-03-1		G	
PART NUMBER	BODY	CONTACT	COUPLING NUT
2901-03-M1-DJP	GOLD/Ni	GOLD/Ni	SS303: PASSIVATE
2901-03-BWP	ALBALOY/ Ag	GOLD/Cu	SS303: PASSIVATE
2901-03-BWA	ALBALOY/ Ag	GOLD/Cu	BRASS: ALBALOY
2901-03-VJP	GOLD/Ni	GOLD/Ni	SS303: PASSIVATE

PLATING PER SAN-TRON SPEC. 7.3.1-8

- 4.0 MECHANICAL
- 4.1 INTERFACES REF MIL-STD-348
- 4.2 COUPLING PROOF TORQUE: 15 INCH*LBS
- 4.3 COUPLING NUT RETENTION: 60 LBS AXIAL
- 4.4 DURABILITY: STD-100 CYCLES M1-500 CYCLES

- 2.0 MATERIALS: RoHS
- 2.1 CONTACT: BRASS
- 2.2 LOCKING RING: BeCu
- 2.3 BODY: STD-BRASS, M1-SS303
- 2.4 COUPLING NUT: SEE TABLE
- 2.5 GASKET: SILICONE RUBBER OR VITON
- 3.0 FINISHES: SEE TABLE

- 1.0 PERFORMANCE: (sea level)
- 1.1 FREQUENCY RANGE DC-40 GHz
- 1.2 VSWR < 1.35
- 1.3 SYSTEM IMPEDANCE 50 OHMS
- 1.4 DWV: 300 Vrms @ 60 Hz
- 1.5 VOLTAGE RATING: 90 Vrms
- 1.6 TEMP RANGE: -65/+150 °C



TOOL SET: T-2901-01-SOLDER

		SAN-TRON, INC. 4 NEWBURYPORT TPK. IPSWICH MA USA 01938 TEL: 978-356-1585 FAX: 978-356-1573 WWW: santron.com E MAIL: santron@santron.com	
TITLE		SMA2,92 PLUG, STRAIGHT	
MATERIAL:		DIRECT SOLDER SR-086	
CAGE CODE: 50896		DWG NO. OL-2901-03-1	
SCALE: X:X		REV. G	

THIS DRAWING CONTAINS CONFIDENTIAL INFORMATION PROPRIETARY TO SAN-TRON, INC. IT MUST NOT BE REPRODUCED OR DISCLOSED TO OTHERS OR USED IN ANY OTHER WAY, IN WHOLE OR PART EXCEPT AS AUTHORIZED IN WRITING BY SAN-TRON, INC.		UNLESS OTHERWISE SPECIFIED: ALL DIMENSIONS ARE IN INCHES. .XXX = ±.005 ALL MACHINED SURFACES $\frac{32}{\text{MAX}}$. .XX = ±.01 ANG. ±1/2° FRACTIONAL = ±1/64 (M) .004 MAX. TIR.	
THIRD ANGLE PROJECTION		DWN DVP 4/12/06 CHKD SJS 4/17/06 APPR FSH 5/6/09	
MIX	7/20/15	FSH	FSH
NEW	5/8/15	FSH	FSH
NEW	6/13/14	FSH	FSH
NEW	6/15/10	FSH	FSH
NEW	5/6/09	FSH	FSH
NEW	4/17/06	Disp.	Date
REMOVE ALL BURRS AND SHARP EDGES .005 MAX.		Dwn. Appd. INTERPRET PER ASME Y14.5M-1994	
Revisions		Ref.: SK-	

DO NOT SCALE DRAWING