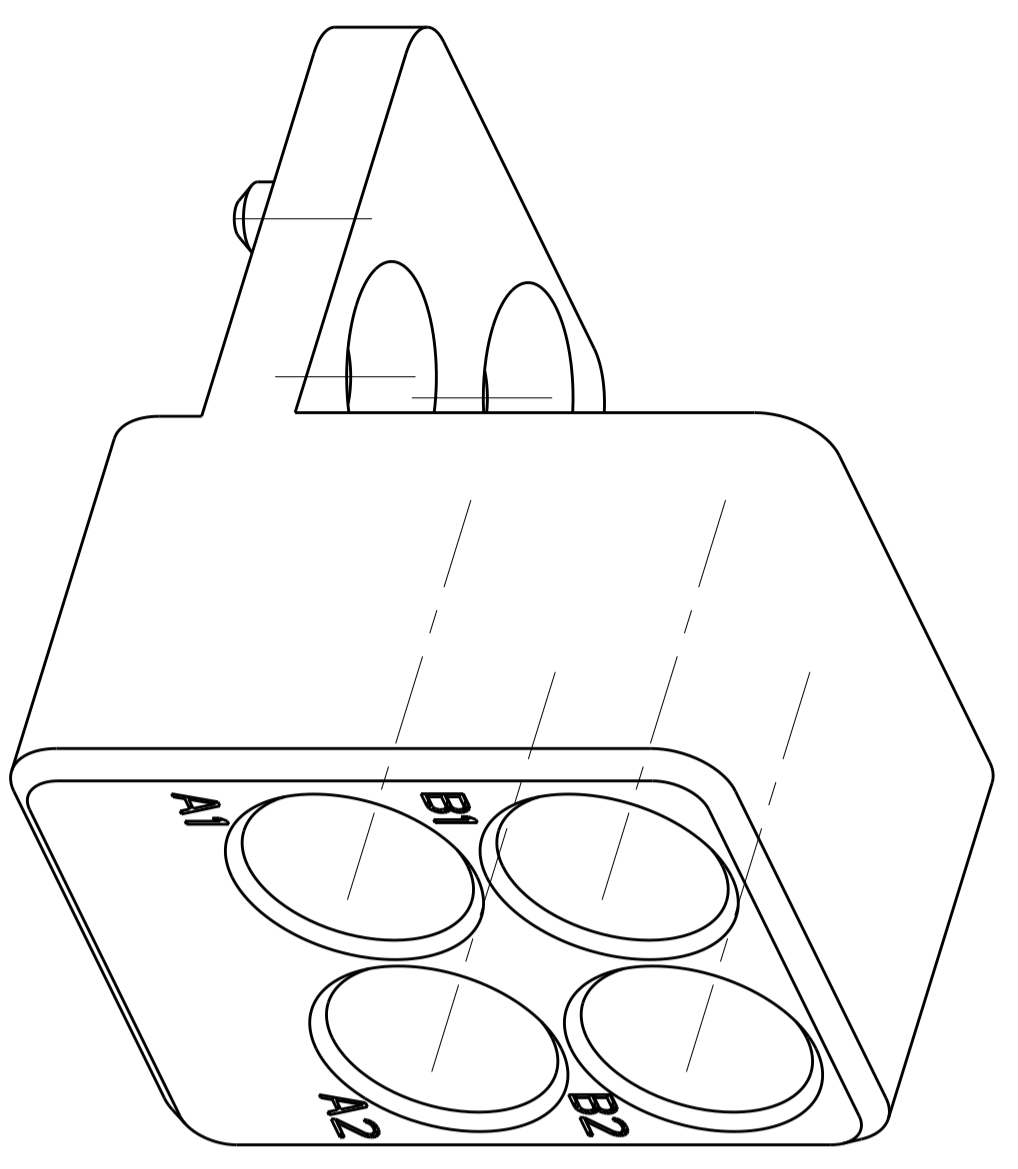
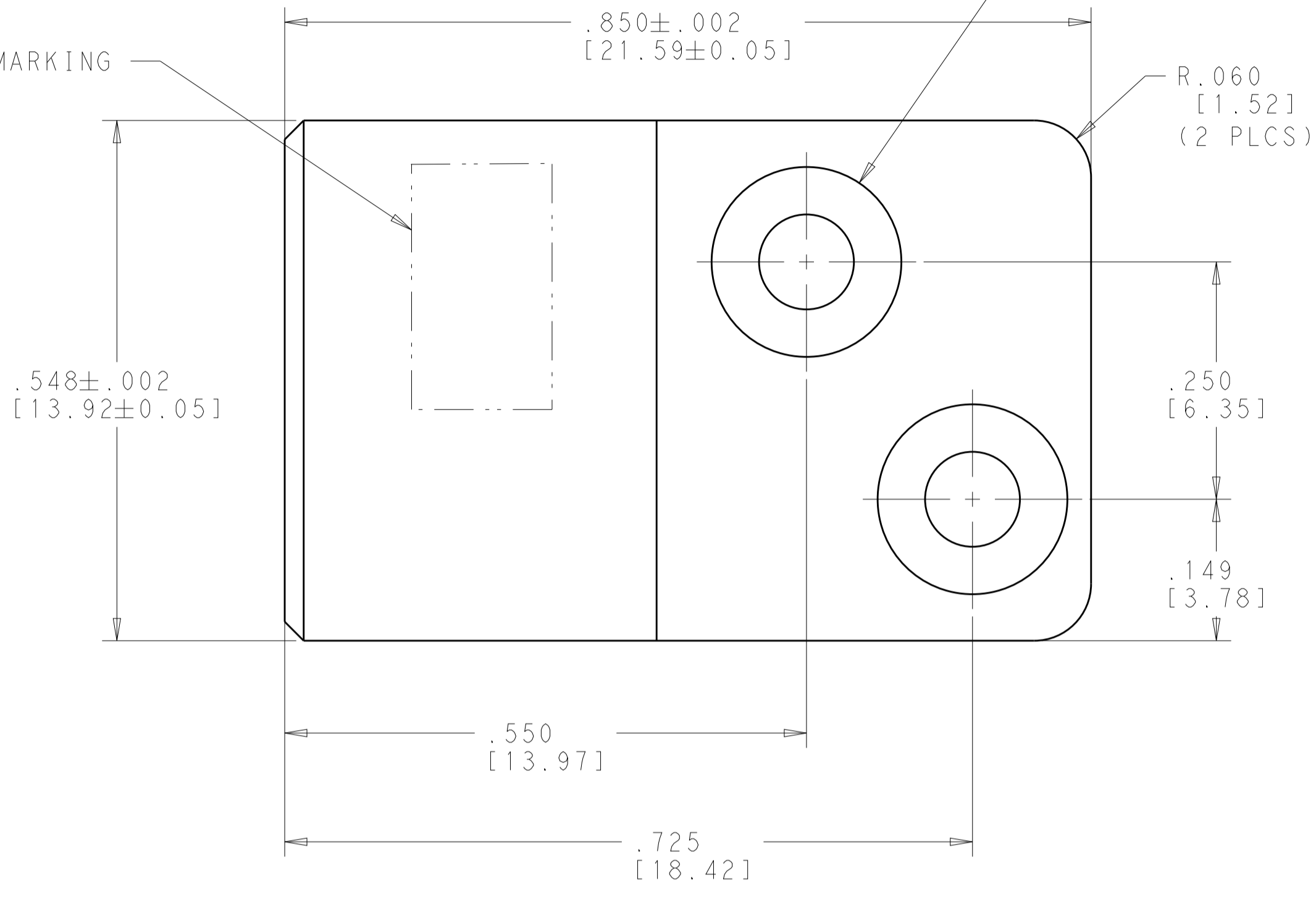


REVISONS		DATE	DWN	APVD
REV	PER	ECO 16-012318	10-12-16	CT DW

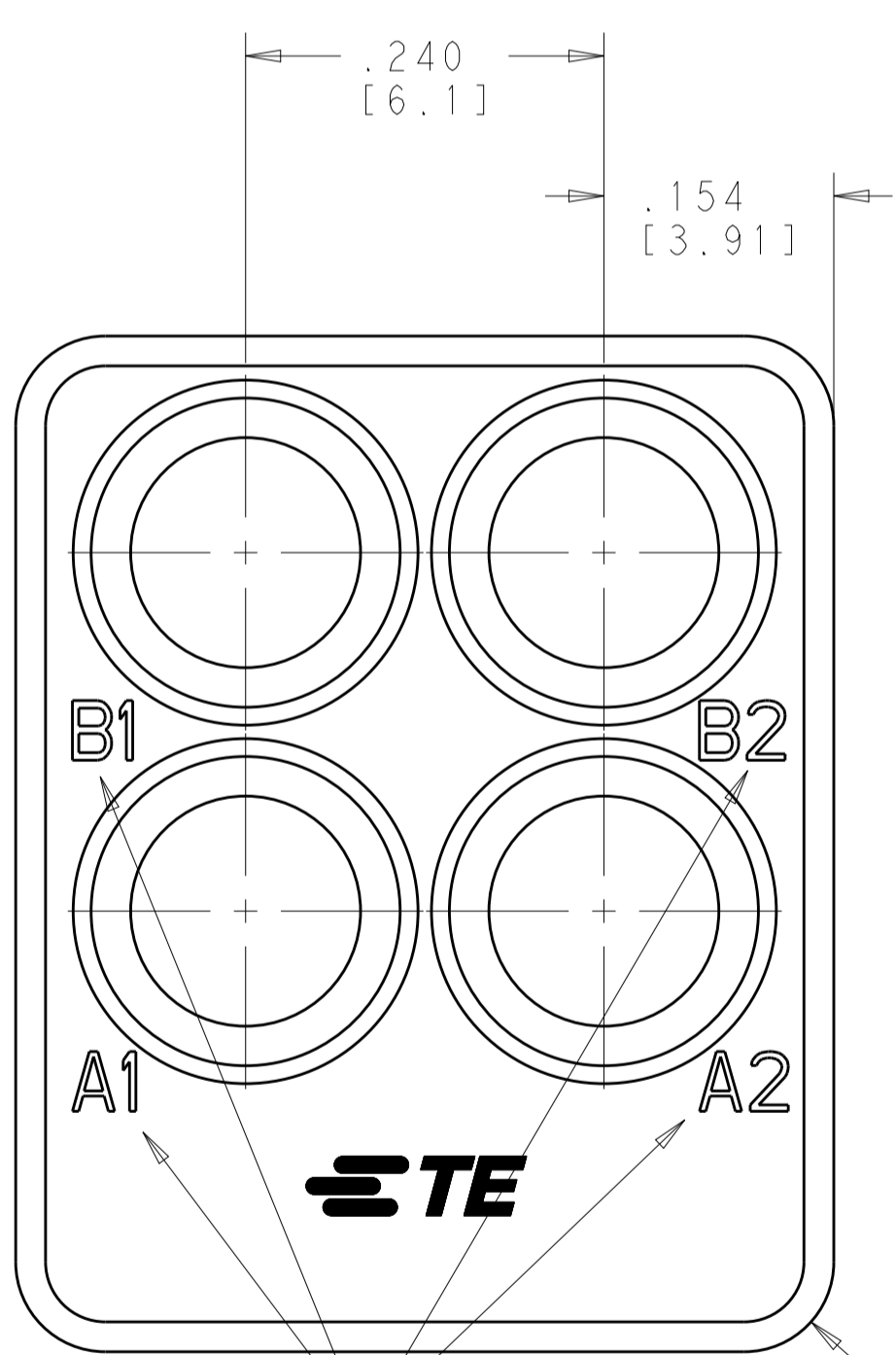
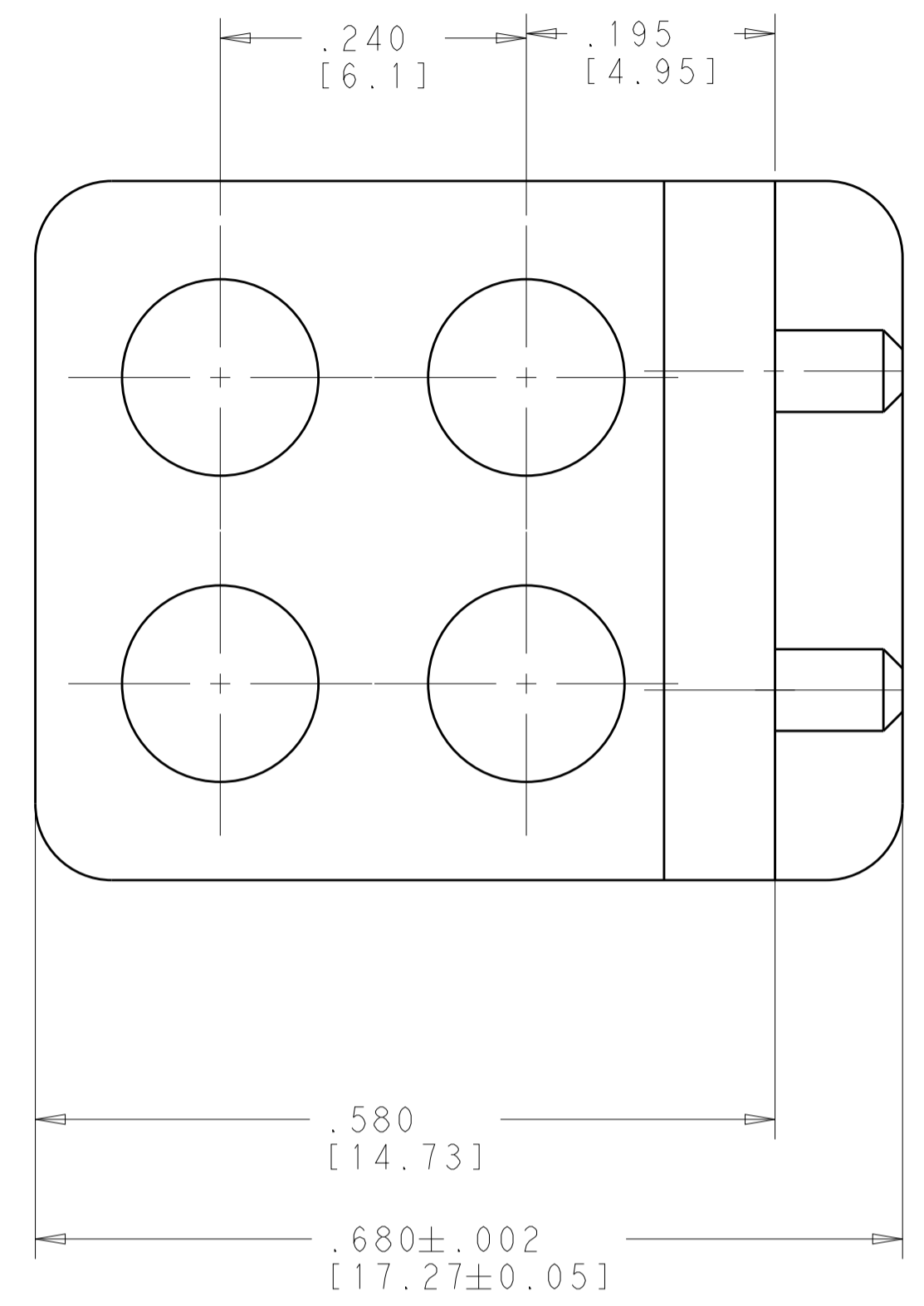


SCALE 6:1

3 PART MARKING

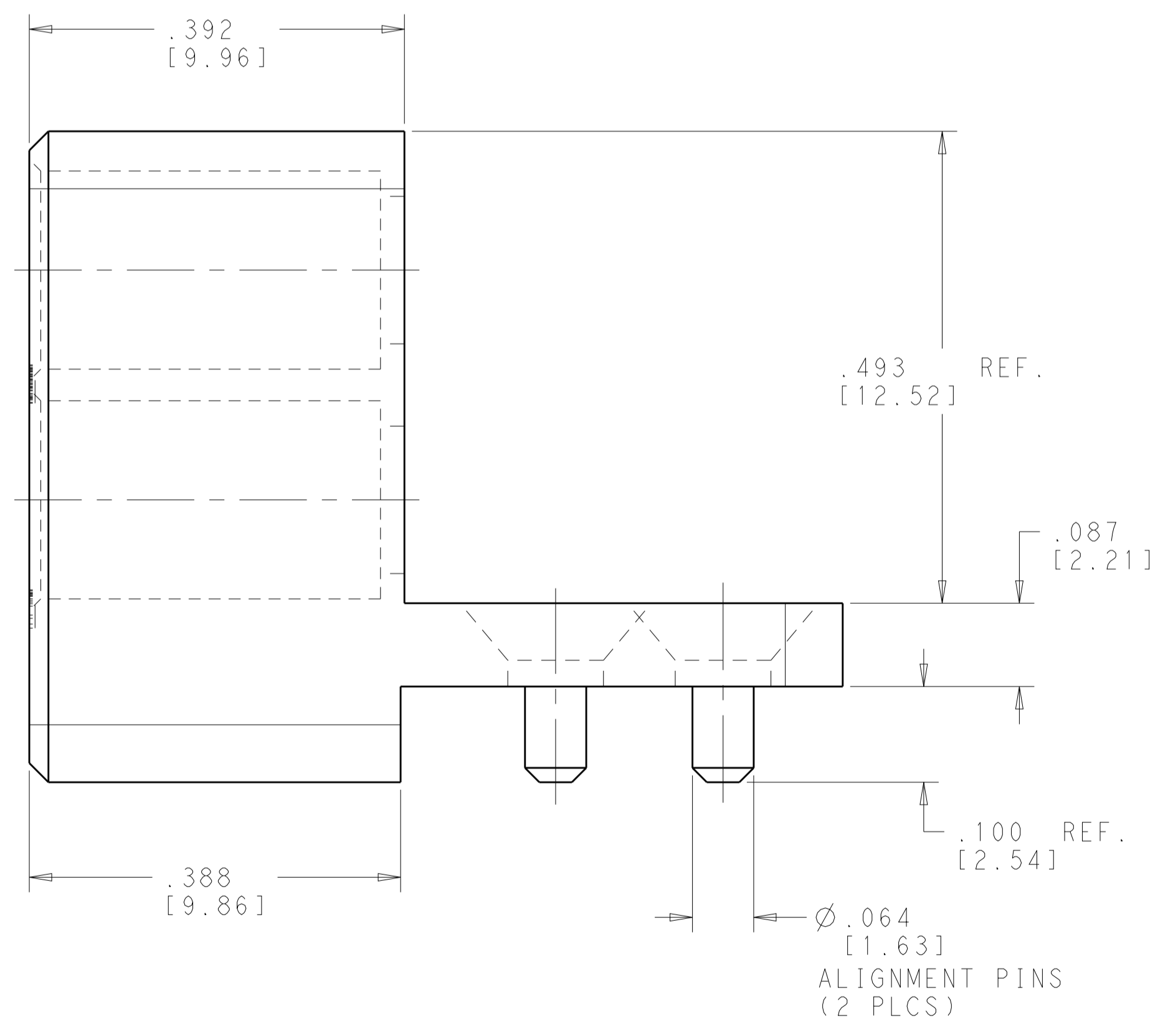


Ø.102 MOUNTING HOLES  
 ACCEPT #2-56UNC, 82° C'SINK.  
 FLAT HEAD SCREWS  
 (2 PLCS)



4 CAVITY IDENTIFICATION

R.060 [1.52] TYP.



ALIGNMENT PINS  
 (2 PLCS)

- 1 MATERIAL: ALUMINUM ALLOW 6061-T6, (UNS A96061) PER ASTM B 221
- 2 FINISH: TRIVALENT CHROMATE CONVERSION COATING. PER MIL-DTL-5541F, CLASS 1A, TYPE II
- 3 PART MARKING: TE CONNECTIVITY PART NUMBER, CAGE CODE AND DATE CODE
- 4 CAVITY IDENTIFICATION MARKING

2157338-3		3 4	2157338-3
PART MARKING		MARKING REQUIREMENT	PART NUMBER
THIS DRAWING IS A CONTROLLED DOCUMENT.		TE Connectivity	
DIMENSIONS: INCHES(mm) TOLERANCES UNLESS OTHERWISE SPECIFIED: 0 PLC ±.1 1 PLC ±.01 2 PLC ±.001 3 PLC ±.0001 4 PLC ±.0001 ANGLES ±.1		DWN RJM 25JAN2011 CHK S T Morley 25JAN2011 APVD S T Morley 25JAN2011 PRODUCT SPEC APPLICATION SPEC WEIGHT CUSTOMER DRAWING	
MATERIAL 1		NAME 4 POSITION R.F. MODULE P.C.B. MOUNT - DAUGHTER CARD VITA 67.1 - ALUMINUM SIZE CAGE CODE DRAWING NO. RESTRICTED TO A1 00779 C=2157338 SCALE 8:1 SHEET 1 OF 1 REV E	