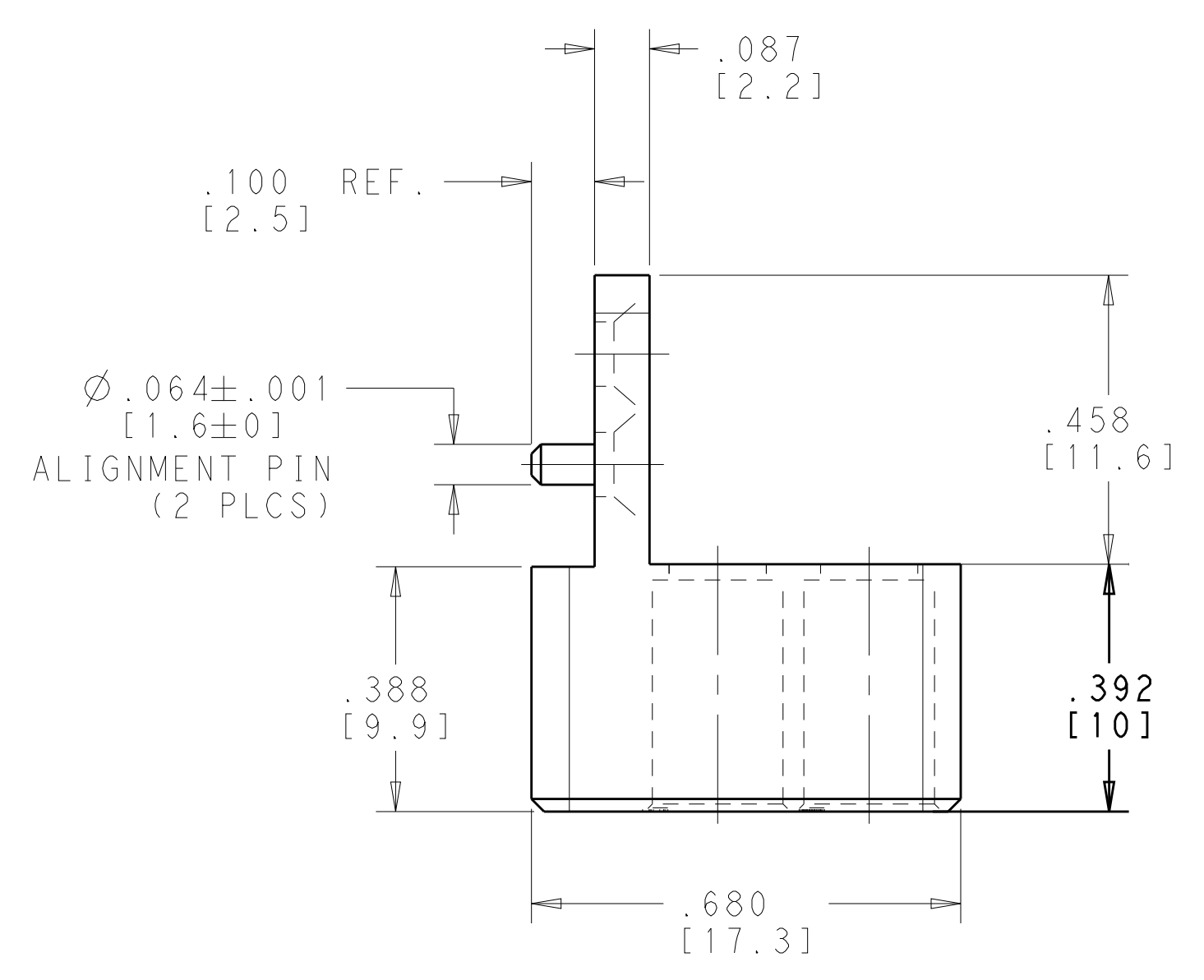
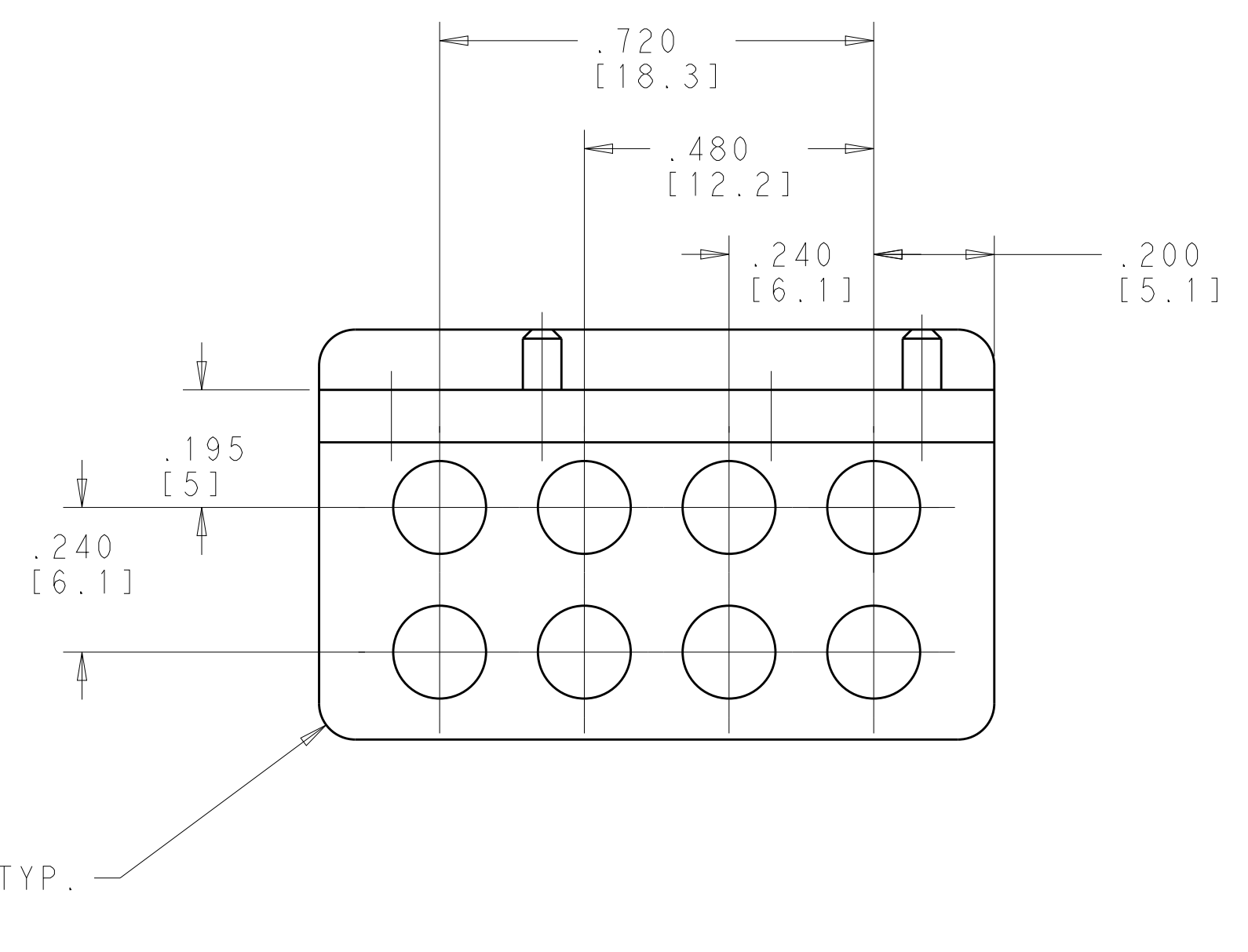
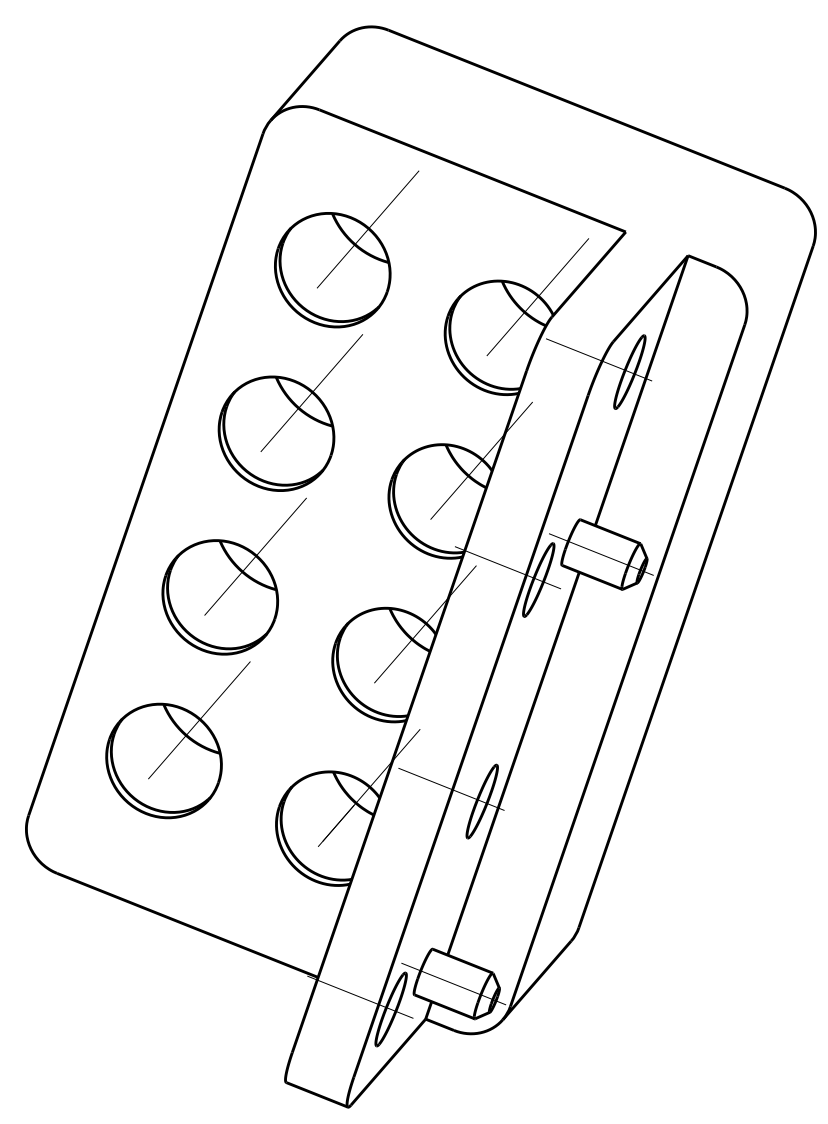
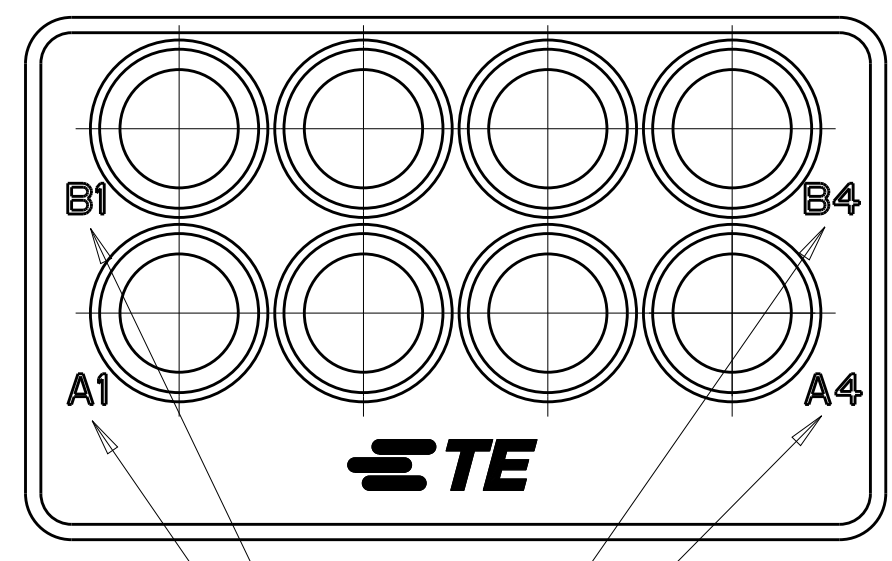
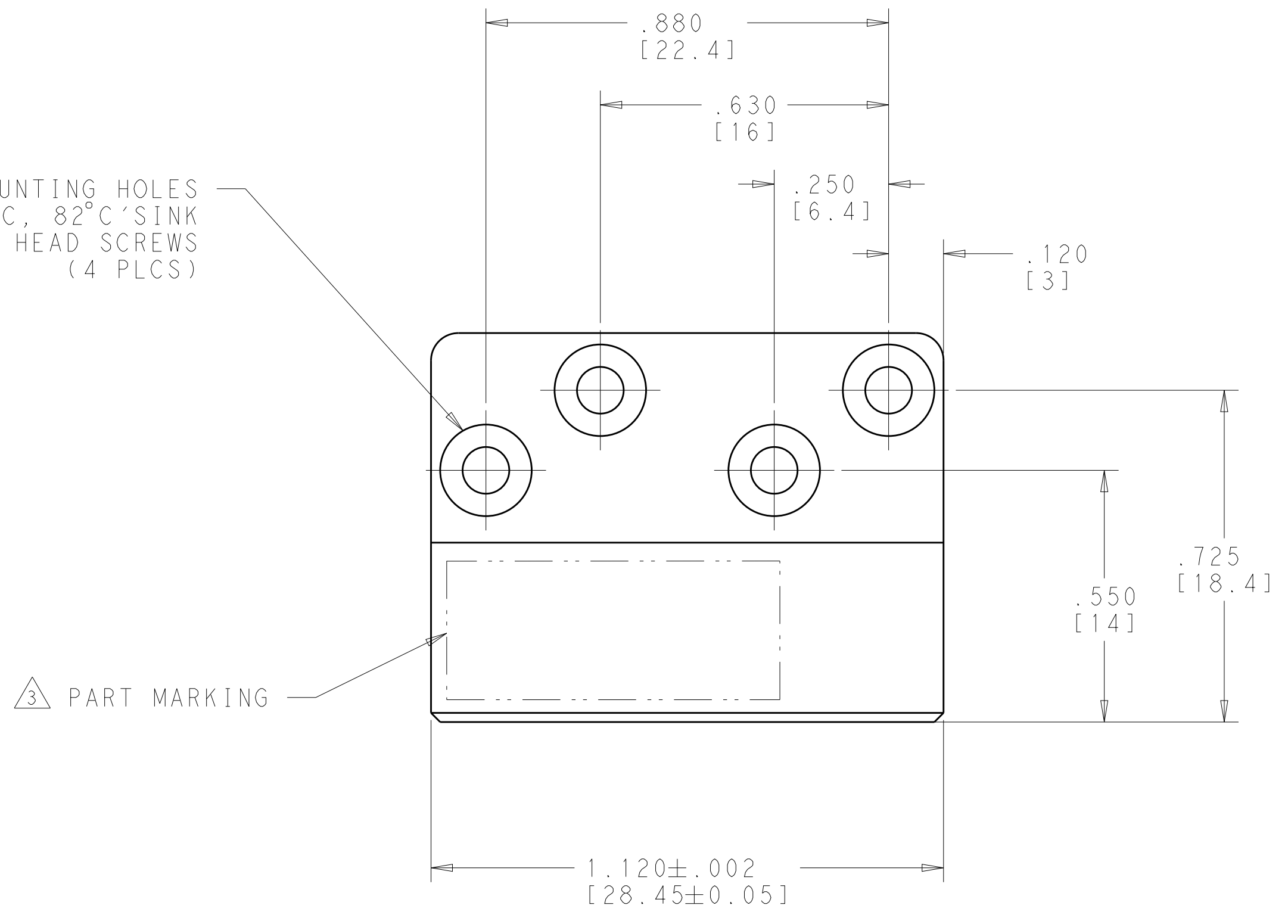


LOC		DIST		REVISIONS			
P	LTN	DESCRIPTION	DATE	DWN	APVD		
E		REV PER ECO 16-012318	10-12-16	CT	DW		



SECTION X-X

Ø.102 MOUNTING HOLES
 ACCEPT #2-56UNC, 82°C SINK
 FLAT HEAD SCREWS
 (4 PLCS)



CAVITY IDENTIFICATION

- 1 MATERIAL: ALUMINUM ALLOY 6061-T6, (UNS A96061) PER ASTM B 221
- 2 FINISH: TRIVALENT CHROMATE CONVERSION COATING, PER MIL-DTL-5541F, CLASS 1A, TYPE II
- 3 PART MARKING: TE CONNECTIVITY PART NUMBER, CAGE CODE AND DATE CODE
- 4 CAVITY IDENTIFICATION MARKING

2157350-3	3 4	2157350-3
P/N MARKING	MARKING REQUIREMENT	PART NUMBER
THIS DRAWING IS A CONTROLLED DOCUMENT. DIMENSIONS: INCHES(mm) TOLERANCES UNLESS OTHERWISE SPECIFIED: 0 PLC ±.1 1 PLC ±.01 2 PLC ±.001 3 PLC ±.0001 4 PLC ±.0001 ANGLES ±1.0° MATERIAL 1 FINISH 2		DWN RJM 25JAN2011 CHK S.T. Morley 25JAN2011 APVD S.T. Morley 25JAN2011 PRODUCT SPEC APPLICATION SPEC WEIGHT 1.045 oz CUSTOMER DRAWING
NAME 8 POSITION R.F. MODULE, P.C.B. MOUNT VITA 67 DAUGHTER CARD ALUMINUM SIZE CAGE CODE DRAWING NO A100779C=2157350		RESTRICTED TO SCALE 4:1 SHEET 1 OF 1 REV E