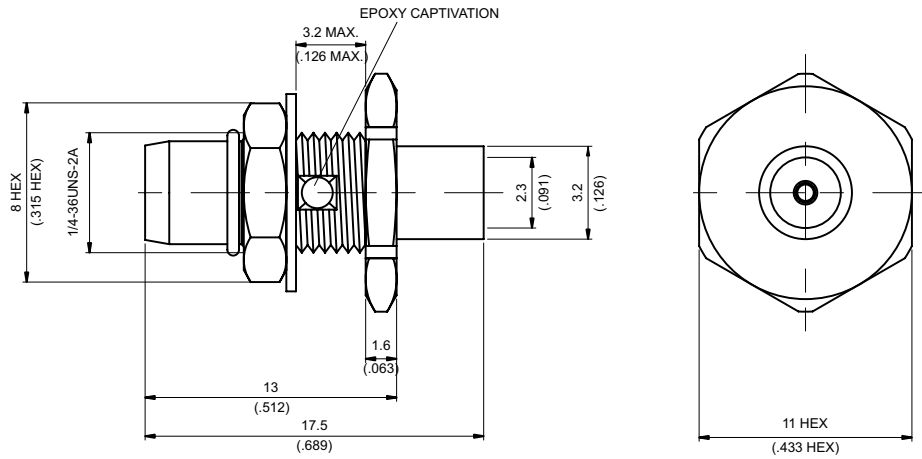
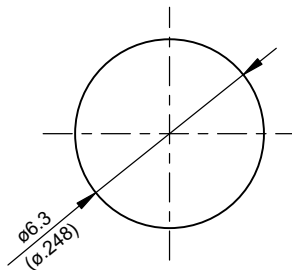


**BMA3305-0085** **BMA Plug Solder For Bulkhead**



**MOUNTING HOLE**



Parts	Material	Plating (Micro-inch)
Contact Pin	Beryllium Copper	Gold 20 Over Nickel 50 Over Copper 50
Hex Nut	Brass	Gold 5 Over Nickel 50 Over Copper 50
Gasket	Silicon	
Lock Washer	Brass	Gold 5 Over Nickel 50 Over Copper 50
Insulator	Teflon	
Body	Brass	Gold 5 Over Nickel 50 Over Copper 50

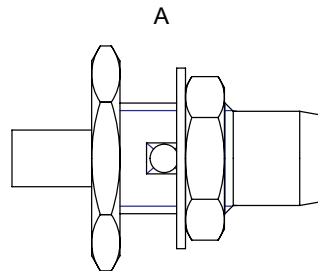
Weight: 3.31 g  
Suitable Cables: Semi-rigid.085

**This part number complies with RoHS.**  
**Notice: JYEBAO reserves the right to make modifications deemed appropriate.**

## CABLE ASSEMBLY INSTRUCTION

BMA3305-0085

JYE BAO CO., LTD.



BODY+HEX NUT  
LOCK WASHER

DIAGRAM	ASSEMBLY INSTRUCTION
	<p>Step 1: STRIP AS SHOWN. Step 2: SHARP THAT PART ON CENTER CONDUCTOR.</p>
	<p>Step 3: SLIDE CABLE INTO CONNECTOR BODY "A".</p>
	<p>Step 4: PUT PREPARED CABLE INTO SOLDERING FIXTURE "ST-008" AND LOCK IT. USE INSERT TOOL "ST-009" TO FIX THE CONNECTOR . Step 5: SCREW LOCATOR TOOL "ST-011" TO THE POSITION AS SHOWN IN "S". SOLDER IN "X" AND PUT EPOXY IN "T".</p>

This part number complies with RoHS.

Notice: JYEBAO reserves the right to make modifications deemed appropriate.